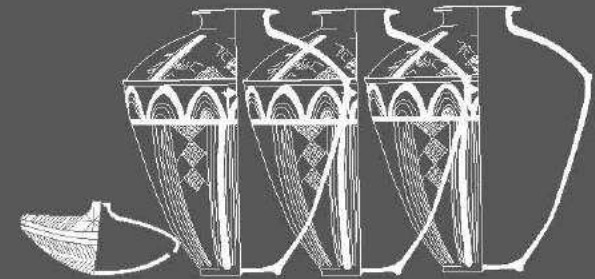


UGZAR PROJECT
CATALOG OF THE SITES
SECTORS A1-A4, B1-B5, C1-C5



SECTORS PRESENT ON THE MAP
PASSIVE SECTORS
SECTORS OUT OF THE CONCESSION



| | | | | | | | | | | | | | | | | | |
|----|----|----|----|----|----|----|----|----|-----|-----|-----|-----|-----|-----|--|--|--|
| A1 | A2 | A3 | A4 | | | | | | | | | | | | | | |
| B1 | B2 | B3 | B4 | B5 | B6 | B7 | B8 | | | | | | | | | | |
| C1 | C2 | C3 | C4 | C5 | C6 | C7 | C8 | C9 | C10 | C11 | | | | | | | |
| D1 | D2 | D3 | D4 | D5 | D6 | D7 | D8 | D9 | D10 | D11 | D12 | | | | | | |
| E1 | E2 | E3 | E4 | E5 | E6 | E7 | E8 | E9 | E10 | E11 | E12 | | | | | | |
| F1 | F2 | F3 | F4 | F5 | F6 | F7 | F8 | F9 | F10 | F11 | F12 | F13 | | | | | |
| G1 | G2 | G3 | G4 | G5 | G6 | G7 | G8 | G9 | G10 | G11 | G12 | G13 | G14 | | | | |
| H1 | H2 | H3 | H4 | H5 | H6 | H7 | H8 | H9 | H10 | H11 | H12 | H13 | H14 | | | | |
| J1 | J2 | J3 | J4 | J5 | J6 | J7 | J8 | J9 | J10 | J11 | J11 | J13 | J14 | | | | |
| K1 | K2 | K3 | K4 | K5 | K6 | K7 | K8 | K9 | K10 | K11 | K12 | K13 | K14 | K15 | | | |
| L1 | L2 | L3 | L4 | L5 | L6 | L7 | L8 | L9 | L10 | L11 | L12 | L13 | L14 | L15 | | | |
| M1 | M2 | M3 | M4 | M5 | M6 | M7 | M8 | M9 | M10 | M11 | M12 | M13 | M14 | | | | |
| N1 | N2 | N3 | N4 | N5 | N6 | N7 | N8 | N9 | N10 | N11 | N12 | | | | | | |

UPPER GREATER ZAB ARCHAEOLOGICAL RECONNAISSANCE PROJECT SEASON 2013

SECTORS ABC 1-5

SECTOR A 2

- S044 ŞUŞ GÜNDE KÜN
- S045 KAL'A ŞUŞE
- S049 GRDİ QSRÜKÉ
- S077 XRABE ŞERMN

SECTOR A 3

- S039 GONDK 'AŞKEFTI
- S041 GRDİ QSRÜKÉ
- S048 DIR MAR 'AUDİŞO

SECTOR B 1

- S075 GRD BERÉZİNÉ
- S076 PİR DAÜD

SECTOR B 3

- S046 GRDİ PERBEBİ
- S047 GRDİ PERBEBİ 2
- S050 GRDİ QSRÜKÉ

SECTOR B 4

- S038 KAL'A AKRÉ
- S043 GRAVE OF ŞIX 'ABDOL 'AZİZ GILANI
- S051 GRDİ QSRÜKÉ

SECTOR C 1

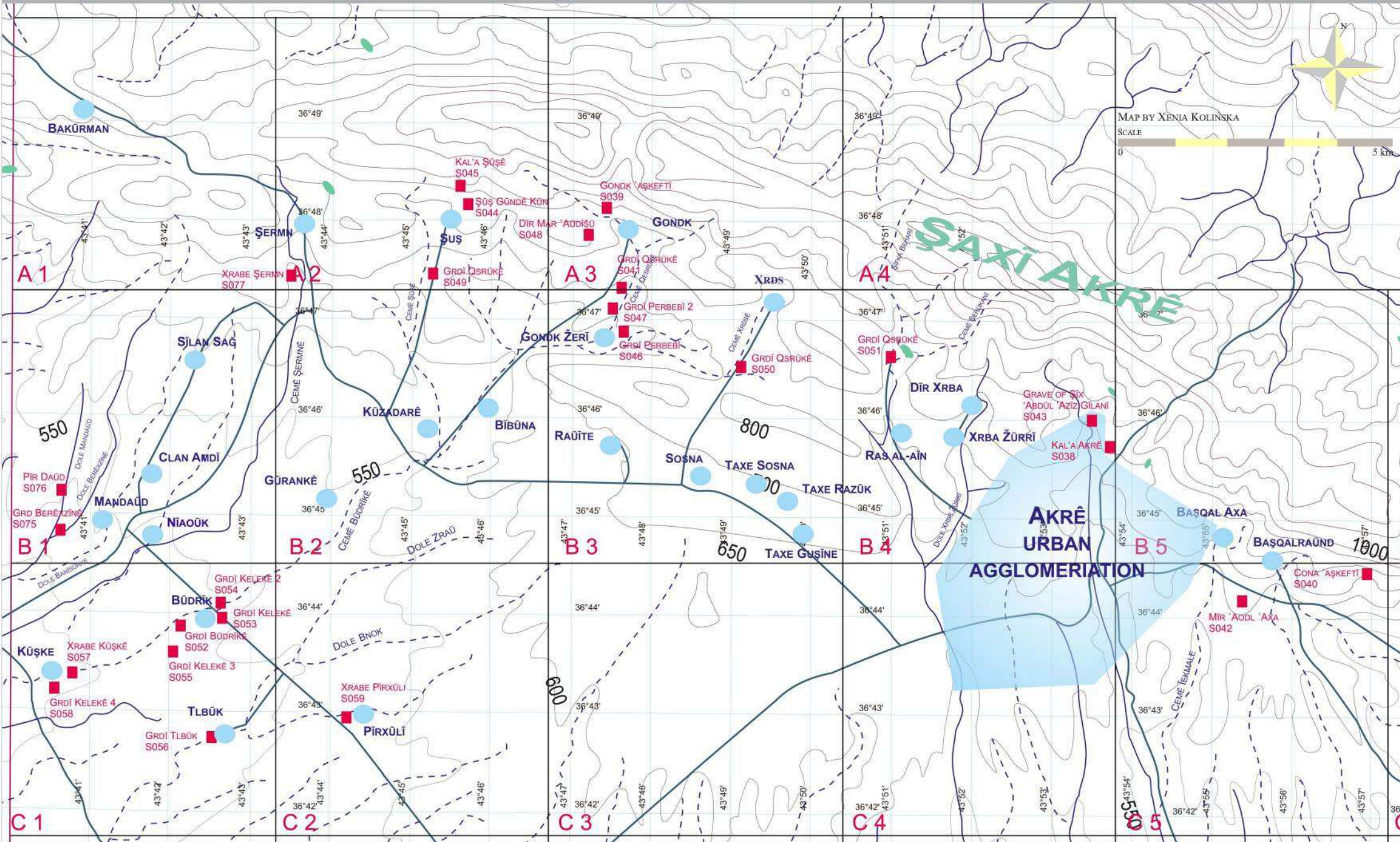
- S052 GRDİ BÜDRİKÉ
- S053 GRDİ KELEKÉ
- S054 GRDİ KELEKÉ 2
- S055 GRDİ KELEKÉ 3

SECTOR C 2

- S056 GRDİ TLBÜK
- S057 XRABE KÜŞKÉ
- S058 GRDİ KELEKÉ 4

SECTOR C 5

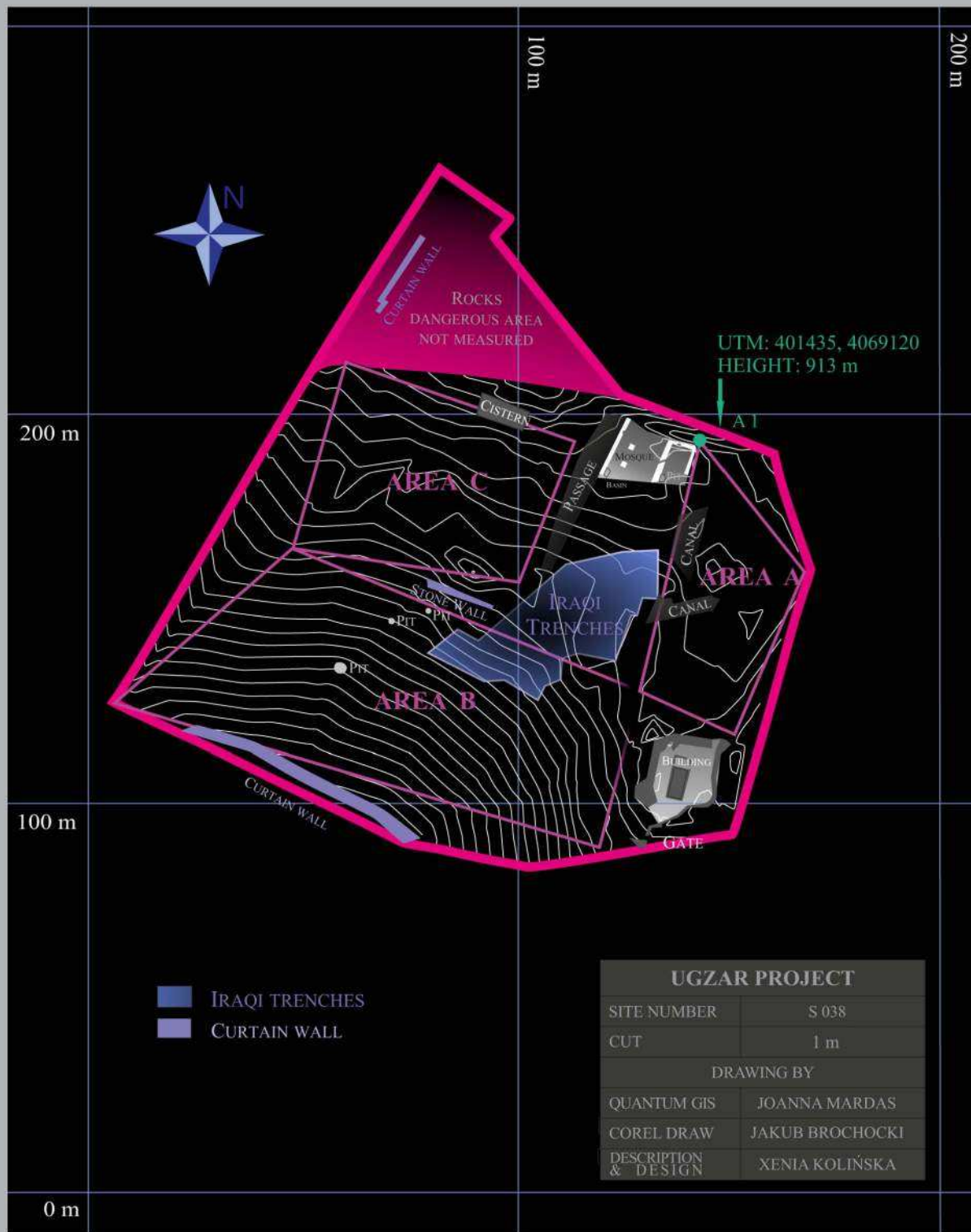
- S040 CONA 'AŞKEFTI
- S042 MİR 'AODL 'AXA



UGZAR PROJECT CHRONOLOGICAL TABLE

| PERIOD | DESIGNATION |
|--------|---|
| PL | Paleolithic |
| PPN | Pre-Pottery Neolithic |
| 0 | Proto-Hassuna |
| 1 | Hassuna, Samarra |
| 2 | Halaf |
| 3 | Ubaid |
| 4 | LC1-2, Early Northern Uruk, Post-Ubaid |
| 5 | LC3-5, Northern Middle Uruk, Southern Middle and Late Uruk |
| 6 | Ninevite V, EJ I-II, ED I-II |
| 7 | Mid- and Late 3 rd millennium, EJ III-V, ED III, Akkadian, Post-Akkadian, Ur III |
| 8 | Old Babylonian, Khabur Ware, Middle Bronze Age |
| 9 | Mitanni |
| 10 | Middle Assyrian, Late Bronze Age |
| 11 | Neo-Late Assyrian, Iron Age |
| 12 | Post-Assyrian, Neo-Babylonian, Achaemenid |
| 13 | Seleucid, Hellenistic |
| 14 | Parthian, Roman |
| 15 | Sasanian |
| 16 | Late Sasanian – Early Islamic |
| 17 | Early Islamic (Abbasid) |
| 18 | Middle Islamic |
| 19 | Middle-Late Islamic |
| 20 | Late Islamic |
| 21 | Undifferentiated Islamic |





| | |
|------------------------|-------------------|
| SITE NUMBER | S 038 |
| LOCAL NAME | KAL' A AKRÊ |
| POSITION UTM 38S | 0401430, 4069058 |
| AREA | 1,5 ha |
| TYPE OF SITE | FORT/KHAN |
| OBSERVATION CONDITIONS | DIFFICULT |
| DAMAGES AND THREATS | VANDALISM/EROSION |
| AREAS COLLECTED | A B C |

PERIOD OF OCCUPATION

| PAL | PPN | 0 | 1 | 2 | 3 | 4 | 5 | 6 | 7 | 8 | 9 | 10 | 11 | 12 | 13 | 14 | 15 | 16 | 17 | 18 | 19 | 20 | 21 |
|-----|-----|---|---|---|---|---|---|---|---|---|---|----|----|----|----|----|----|----|----|----|----|----|----|
| | | | | | | | | | | | | | | | | | | | | | | | |

KAL' A AKRÊ - SEEN FROM THE SOUTH



PHOTO BY X. KOLIŃSKA

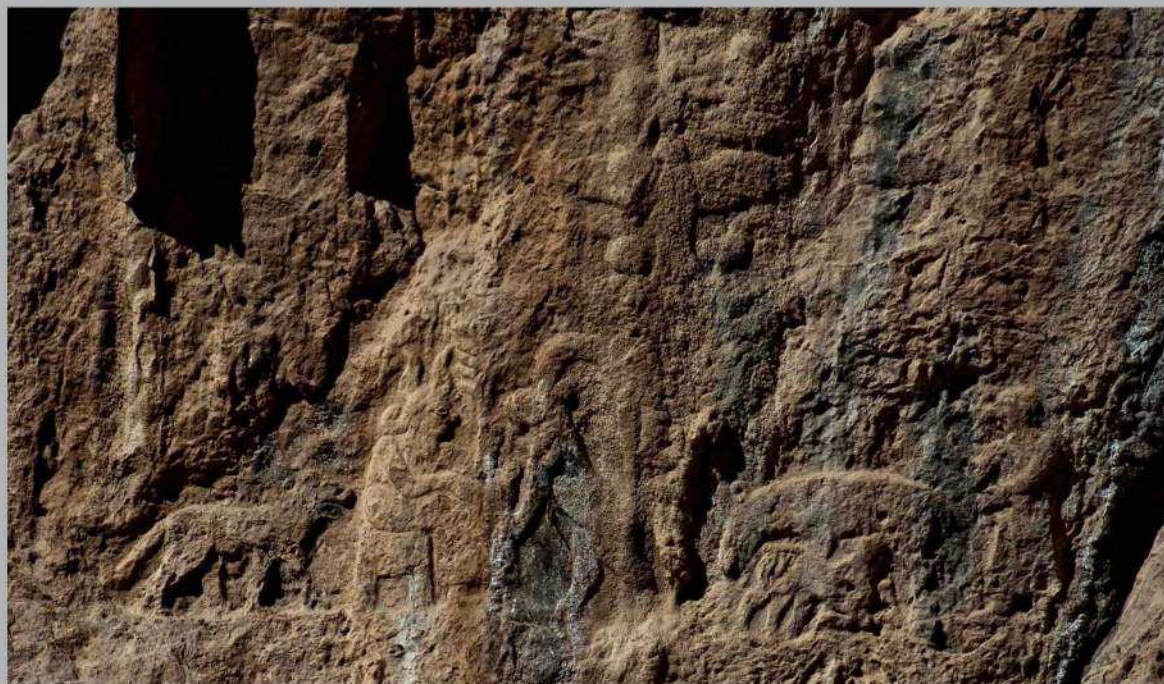


PHOTO BY D. PANESEKI

PANEL III

| | |
|------------------------|---------------------------------------|
| SITE NUMBER | S 039 |
| LOCAL NAME | GONDK 'AŠKEFTĪ |
| POSITION UTM 38S | 0392256, 4073460 |
| AREA | - |
| TYPE OF SITE | CAVE/ROCK RELIEF |
| OBSERVATION CONDITIONS | POOR |
| DAMAGES AND THREATS | VANDALISM/WATER EROSION ANIMAL PEN |
| AREAS COLLECTED | A |

PERIOD OF OCCUPATION

| PAL | PPN | 0 | 1 | 2 | 3 | 4 | 5 | 6 | 7 | 8 | 9 | 10 | 11 | 12 | 13 | 14 | 15 | 16 | 17 | 18 | 19 | 20 | 21 |
|-----|-----|---|---|---|---|---|---|---|---|---|---|----|----|----|----|----|----|----|----|----|----|----|----|
| | | | | | | | | | | | | | | | | | | | | | | | |

THE CAVE SEEN FROM THE SOUTH



PHOTO BY A. SMILGŪN



MAP BY X. KOLINŠKA



PHOTO BY A. SMIŁGA

THE MAIN CAVE SEEN FROM THE SOUTH-WEST

INTERIOR OF THE MAIN CAVE

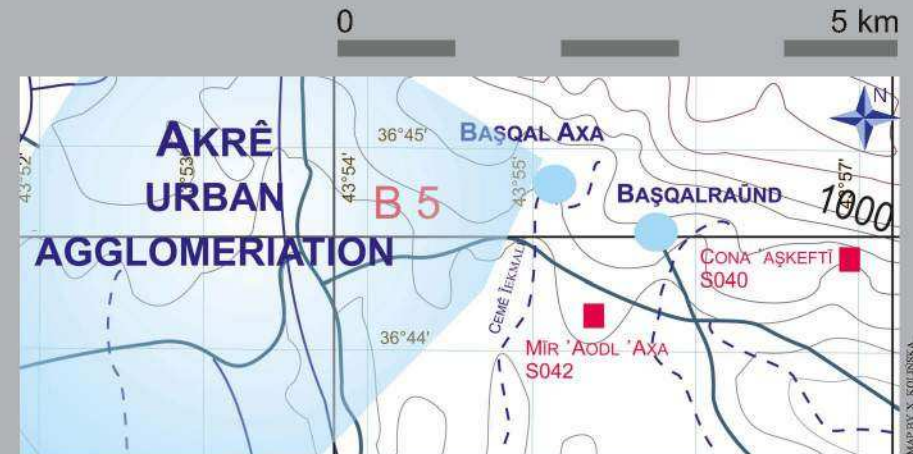


PHOTO BY A. SMIŁGA

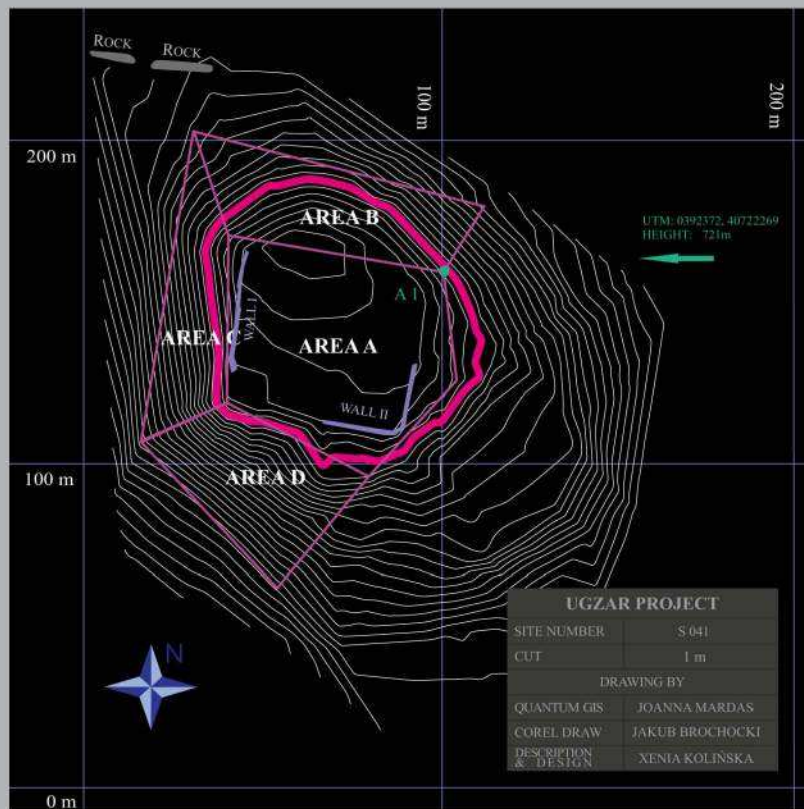
| | |
|------------------------|------------------------|
| SITE NUMBER | S 040 |
| LOCAL NAME | CONA 'AŞKEŢI |
| POSITION UTM 38s | 0406280, 4066695 |
| AREA | 140 m ² |
| TYPE OF SITE | ROCK SHELTER |
| OBSERVATION CONDITIONS | POOR |
| DAMAGES AND THREATS | HOUSES/ANIMAL PENS |
| AREAS COLLECTED | MATERIAL NOT COLLECTED |

PERIOD OF OCCUPATION

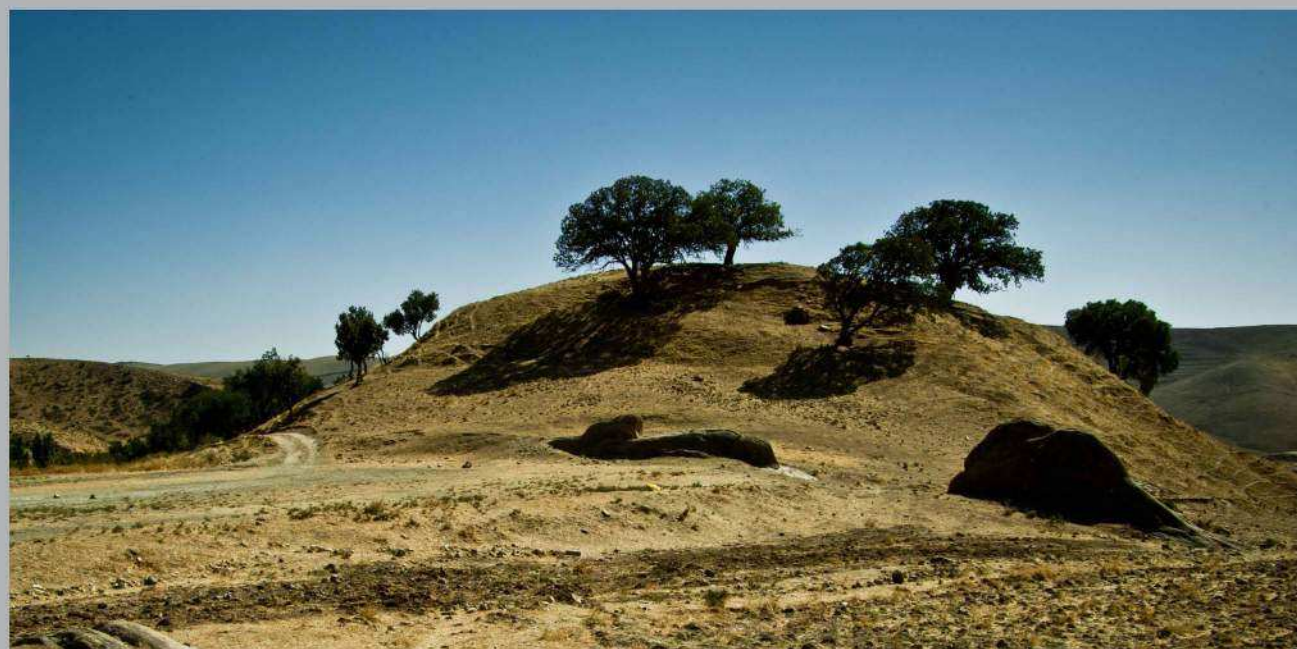
| PAL | PPN | 0 | 1 | 2 | 3 | 4 | 5 | 6 | 7 | 8 | 9 | 10 | 11 | 12 | 13 | 14 | 15 | 16 | 17 | 18 | 19 | 20 | 21 |
|-----|-----|---|---|---|---|---|---|---|---|---|---|----|----|----|----|----|----|----|----|----|----|----|----|
| | | | | | | | | | | | | | | | | | | | | | | | |



MAP BY X. KOLJENKA



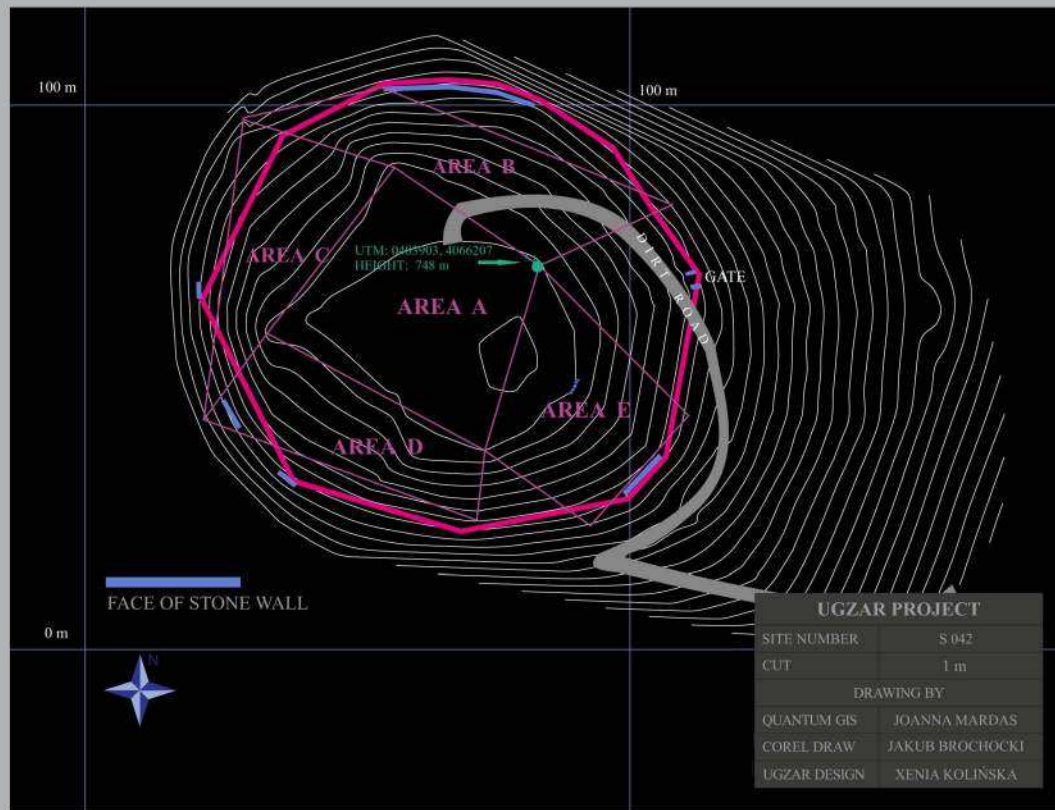
SEEN FROM THE NORTH



| | |
|------------------------|---------------------|
| SITE NUMBER | S 041 |
| LOCAL NAME | GRDĪ QSRŪKĒ |
| POSITION UTM 38S | 0392335, 4072275 |
| AREA | 0,46 ha |
| TYPE OF SITE | TELL/RUIN |
| OBSERVATION CONDITIONS | DIFFICULT |
| DAMAGES AND THREATS | CEMETERY/ANIMAL PEN |
| AREAS COLLECTED | A B C D E |

PERIOD OF OCCUPATION

| PAL | PPN | 0 | 1 | 2 | 3 | 4 | 5 | 6 | 7 | 8 | 9 | 10 | 11 | 12 | 13 | 14 | 15 | 16 | 17 | 18 | 19 | 20 | 21 |
|-----|-----|---|---|---|---|---|---|---|---|---|---|----|----|----|----|----|----|----|----|----|----|----|----|
| | | | | | | | | | | | | | | | | | | | | | | | |



| | |
|------------------------|------------------|
| SITE NUMBER | S 042 |
| LOCAL NAME | MĪR 'AODL 'AXA |
| POSITION UTM 38s | 0493887, 4066199 |
| AREA | 0,54 ha |
| TYPE OF SITE | FORT/KHAN/TELL |
| OBSERVATION CONDITIONS | DIFFICULT |
| DAMAGES AND THREATS | CUTS/EROSION |
| AREAS COLLECTED | A B C D E |

PERIOD OF OCCUPATION

| PAL | PPN | 0 | 1 | 2 | 3 | 4 | 5 | 6 | 7 | 8 | 9 | 10 | 11 | 12 | 13 | 14 | 15 | 16 | 17 | 18 | 19 | 20 | 21 |
|-----|-----|---|---|---|---|---|---|---|---|---|---|----|----|----|----|----|----|----|----|----|----|----|----|
| | | | | | | | | | | | | | | | | | | | | | | | |

THE TOP SEEN FROM THE SOUTH





GRAVE OF ŞİḤ 'ABDŪL 'AZİZ GĪLANĪ

GRAVE OF ŞİḤ 'ABDŪL 'AZİZ GĪLANĪ - DETAIL



PHOTO BY A. SHALĀN

PHOTO BY A. SHALĀN

| | |
|------------------------|----------------------------------|
| SITE NUMBER | S 043 |
| LOCAL NAME | GRAVE OF ŞİḤ 'ABDŪL 'AZİZ GĪLANĪ |
| POSITION UTM 38S | 0401266, 4069677 |
| AREA | - |
| TYPE OF SITE | MAUSOLEUM |
| OBSERVATION CONDITIONS | DIFFICULT |
| DAMAGES AND THREATS | - |
| AREAS COLLECTED | MATERIAL NOT COLLECTED |

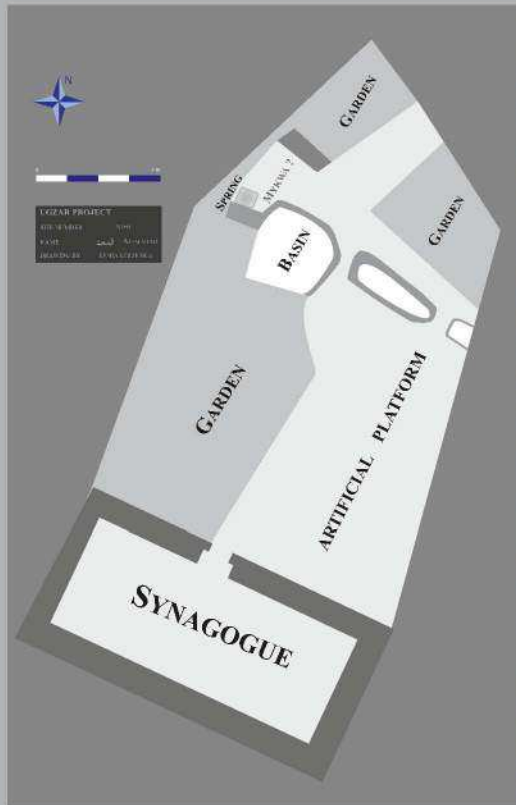
PERIOD OF OCCUPATION

| PAL | PPN | 0 | 1 | 2 | 3 | 4 | 5 | 6 | 7 | 8 | 9 | 10 | 11 | 12 | 13 | 14 | 15 | 16 | 17 | 18 | 19 | 20 | 21 |
|-----|-----|---|---|---|---|---|---|---|---|---|---|----|----|----|----|----|----|----|----|----|----|----|----|
| | | | | | | | | | | | | | | | | | | | | | | | |

0 5 km



MAP BY X. KOLINSKA



| | |
|------------------------|----------------------------|
| SITE NUMBER | S 044 |
| LOCAL NAME | ŞUŞ GÜNDÊ KÜN |
| POSITION UTM 38S | 0389680, 4073716 |
| AREA | 0,54 ha |
| TYPE OF SITE | FLAT SETTLEMENT/RUIN |
| OBSERVATION CONDITIONS | DIFFICULT |
| DAMAGES AND THREATS | PIT/GARDEN/ORCHARD/EROSION |
| AREAS COLLECTED | A |

PERIOD OF OCCUPATION

| PAL | PPN | 0 | 1 | 2 | 3 | 4 | 5 | 6 | 7 | 8 | 9 | 10 | 11 | 12 | 13 | 14 | 15 | 16 | 17 | 18 | 19 | 20 | 21 |
|-----|-----|---|---|---|---|---|---|---|---|---|---|----|----|----|----|----|----|----|----|----|----|----|----|
| | | | | | | | | | | | | | | | | | | | | | | | |

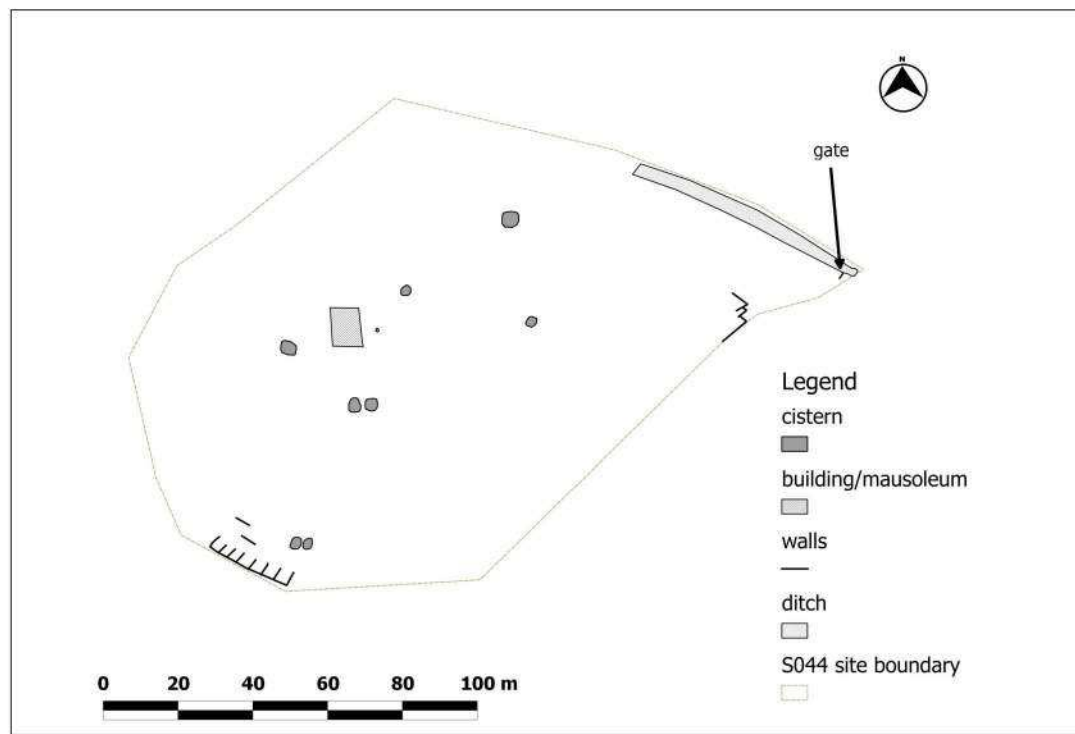
AL-MABAD - OLD SYNAGOGUE

ŞUŞ GÜNDÊ KÜN - OLD VILLAGE SEEN FROM THE SOUTH



PHOTO BY X. KOLINSKA

PHOTO BY D. PANIECKI



PLAN BY M. KORTYENKO

| | |
|------------------------|--|
| SITE NUMBER | S 045 |
| LOCAL NAME | KAL'A ŞÜŞË |
| POSITION UTM 38S | 0389516, 4074120 |
| AREA | 1,5 ha |
| TYPE OF SITE | FORT/KHAN |
| OBSERVATION CONDITIONS | POOR |
| DAMAGES AND THREATS | WATER AND WIND EROSSION ANIMAL ACTIVITY |
| AREAS COLLECTED | A |

| PERIOD OF OCCUPATION | | 0 | 1 | 2 | 3 | 4 | 5 | 6 | 7 | 8 | 9 | 10 | 11 | 12 | 13 | 14 | 15 | 16 | 17 | 18 | 19 | 20 | 21 |
|----------------------|-----|---|---|---|---|---|---|---|---|---|---|----|----|----|----|----|----|----|----|----|----|----|----|
| PAL | PPN | | | | | | | | | | | | | | | | | | | | | | |

VIEW FROM KAL'A ŞÜŞË TOWARDS THE SOUTH



PHOTO BY A. SULTAN



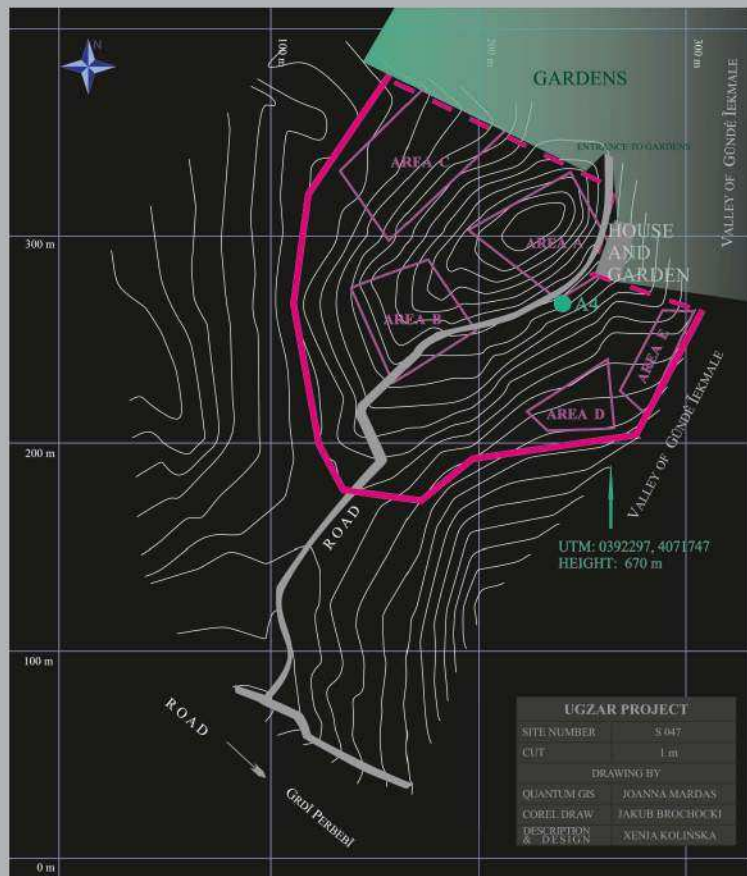
| | |
|------------------------|----------------------|
| SITE NUMBER | S 046 |
| LOCAL NAME | GRDİ PERBEBİ 1 |
| POSITION UTM 38s | 0392349, 4071323 |
| AREA | 3 ha |
| TYPE OF SITE | TELL WITH LOWER CITY |
| OBSERVATION CONDITIONS | DIFFICULT |
| DAMAGES AND THREATS | AGRICULTURE/EROSION |
| AREAS COLLECTED | A B C D E |

PERIOD OF OCCUPATION

| PAL | PPN | 0 | 1 | 2 | 3 | 4 | 5 | 6 | 7 | 8 | 9 | 10 | 11 | 12 | 13 | 14 | 15 | 16 | 17 | 18 | 19 | 20 | 21 |
|-----|-----|---|---|---|---|---|---|---|---|---|---|----|----|----|----|----|----|----|----|----|----|----|----|
| | | | | | | | | | | | | | | | | | | | | | | | |

SEEN FROM THE SOUTH-EAST





| | |
|------------------------|---|
| SITE NUMBER | S 047 |
| LOCAL NAME | GRDĪ PERBEBĪ 2 |
| POSITION UTM 38s | 0392202, 4071741 |
| AREA | 3 ha |
| TYPE OF SITE | TELL WITH LOWER CITY |
| OBSERVATION CONDITIONS | DIFFICULT |
| DAMAGES AND THREATS | CUTS/GARDEN/ORCHARD/ROADS AGRICULTURE/POLES/TOWERS |
| AREAS COLLECTED | A B C D E |

PERIOD OF OCCUPATION

| PAL | PPN | 0 | 1 | 2 | 3 | 4 | 5 | 6 | 7 | 8 | 9 | 10 | 11 | 12 | 13 | 14 | 15 | 16 | 17 | 18 | 19 | 20 | 21 |
|-----|-----|---|---|---|---|---|---|---|---|---|---|----|----|----|----|----|----|----|----|----|----|----|----|
| | | | | | | | | | | | | | | | | | | | | | | | |

SEEN FROM THE EAST



PHOTO BY A. SMILGON

| | |
|------------------------|--|
| SITE NUMBER | S 048 |
| LOCAL NAME | DĪR MAR 'AŪDĪŠŪ |
| POSITION UTM 38s | 0391892, 4073279 |
| AREA | 0,04 ha |
| TYPE OF SITE | RUIN |
| OBSERVATION CONDITIONS | POOR |
| DAMAGES AND THREATS | PITS/DEMOLITION |
| AREAS COLLECTED | A <input type="checkbox"/> <input type="checkbox"/> <input type="checkbox"/> <input type="checkbox"/> <input type="checkbox"/> <input type="checkbox"/> <input type="checkbox"/> <input type="checkbox"/> <input type="checkbox"/> <input type="checkbox"/> <input type="checkbox"/> |

PERIOD OF OCCUPATION

| PAL | PPN | 0 | 1 | 2 | 3 | 4 | 5 | 6 | 7 | 8 | 9 | 10 | 11 | 12 | 13 | 14 | 15 | 16 | 17 | 18 | 19 | 20 | 21 |
|-----|-----|---|---|---|---|---|---|---|---|---|---|----|----|----|----|----|----|----|----|----|----|----|----|
| | | | | | | | | | | | | | | | | | | | | | | | |

SEEN FROM THE NORTH-EAST



PHOTO BY D. FRANECKI

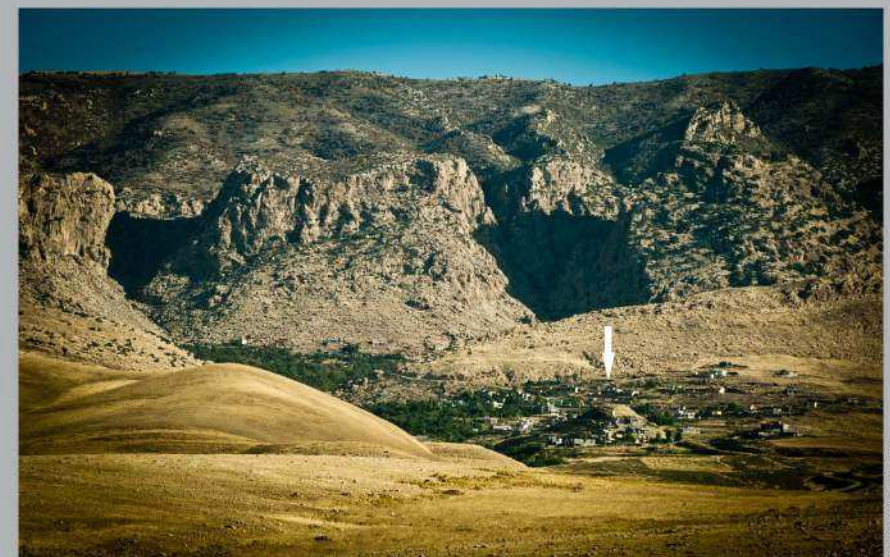


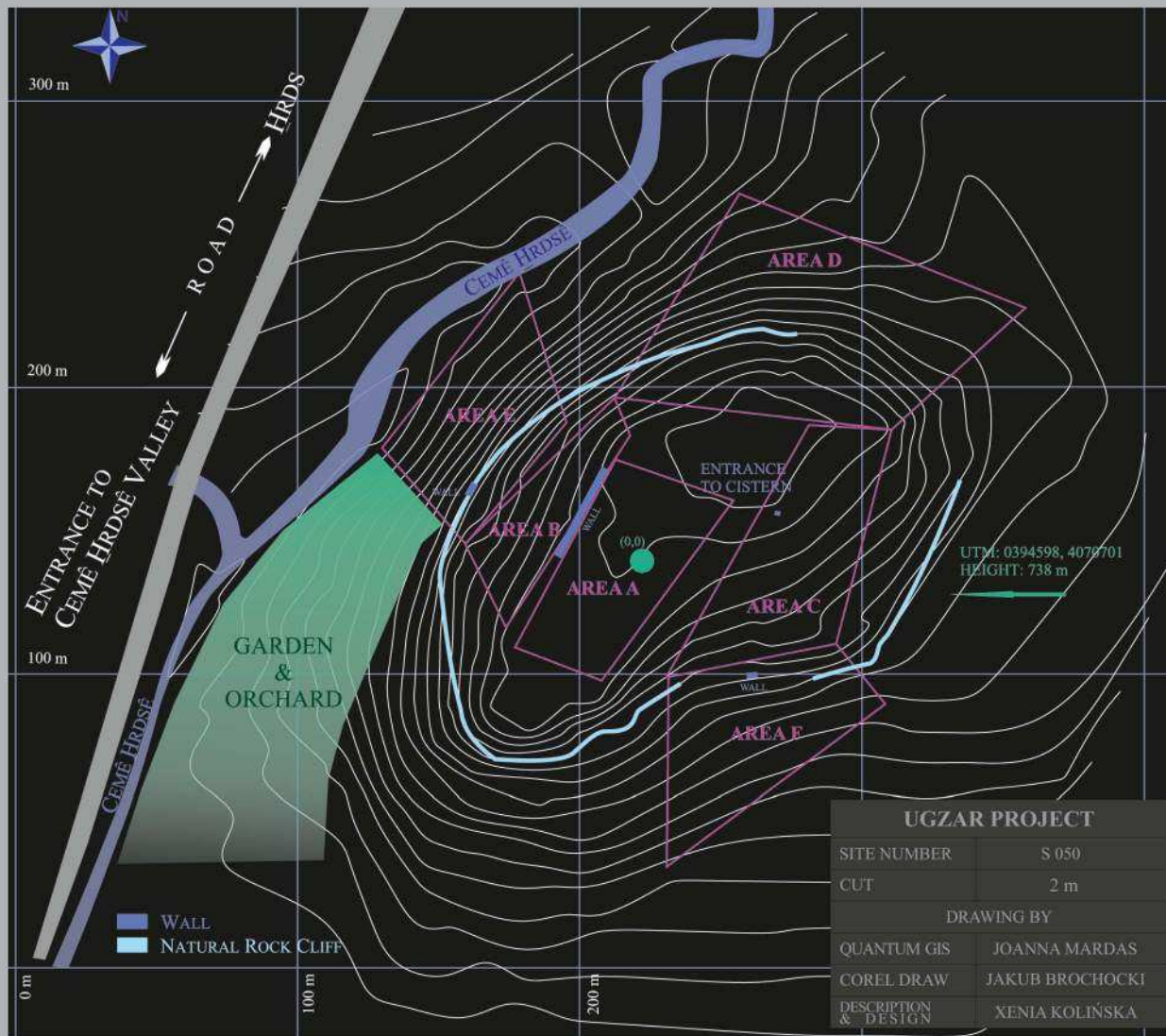
| | |
|------------------------|---------------------------|
| SITE NUMBER | S 049 |
| LOCAL NAME | GRDĪ QSRŪKĒ |
| POSITION UTM 38S | 0388913, 4072527 |
| AREA | 0,53 ha |
| TYPE OF SITE | TELL |
| OBSERVATION CONDITIONS | DIFFICULT |
| DAMAGES AND THREATS | CUTS/GARDEN/ORCHARD/ROADS |
| AREAS COLLECTED | A B C D E |

PERIOD OF OCCUPATION

| PAL | PPN | 0 | 1 | 2 | 3 | 4 | 5 | 6 | 7 | 8 | 9 | 10 | 11 | 12 | 13 | 14 | 15 | 16 | 17 | 18 | 19 | 20 | 21 |
|-----|-----|---|---|---|---|---|---|---|---|---|---|----|----|----|----|----|----|----|----|----|----|----|----|
| | | | | | | | | | | | | | | | | | | | | | | | |

SEEN FROM THE SOUTH





| | |
|------------------------|-----------------------|
| SITE NUMBER | S 050 |
| LOCAL NAME | GRDĪ QSRŪKĒ |
| POSITION UTM 38s | 0394597, 4070701 |
| AREA | 1,9 ha |
| TYPE OF SITE | TELL |
| OBSERVATION CONDITIONS | DIFFICULT |
| DAMAGES AND THREATS | EROSION PENS |
| AREAS COLLECTED | A B C D E F |

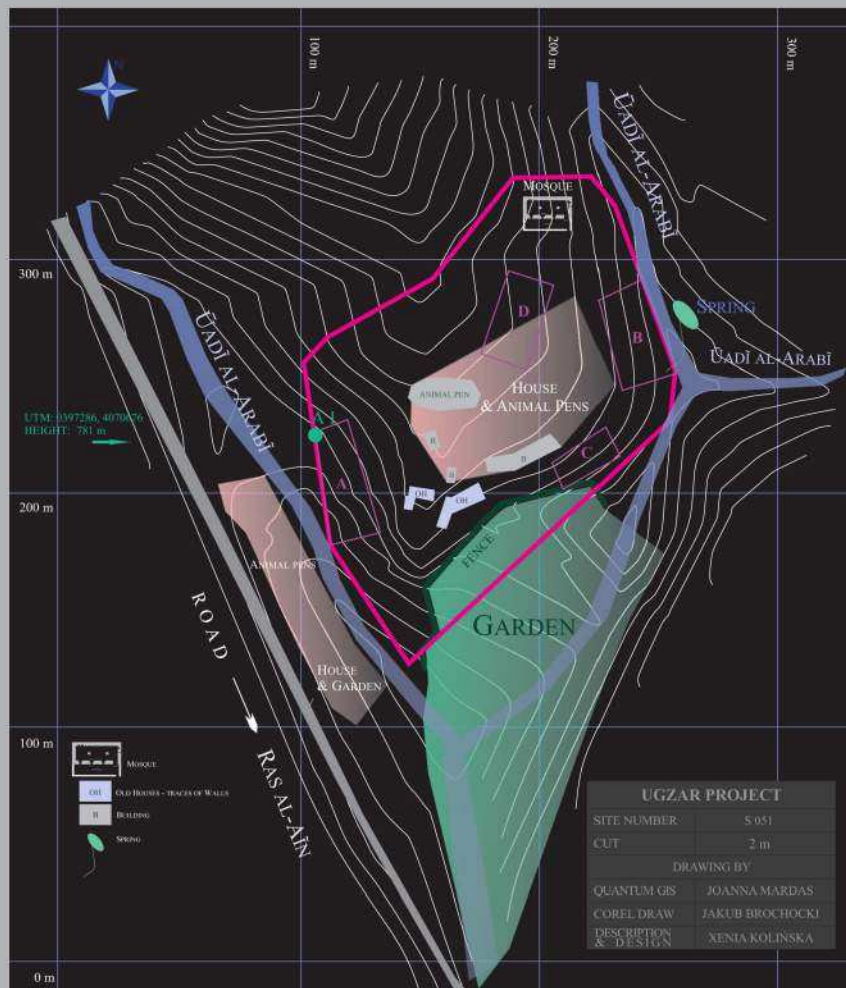
PERIOD OF OCCUPATION

| PAL | PPN | 0 | 1 | 2 | 3 | 4 | 5 | 6 | 7 | 8 | 9 | 10 | 11 | 12 | 13 | 14 | 15 | 16 | 17 | 18 | 19 | 20 | 21 |
|-----|-----|---|---|---|---|---|---|---|---|---|---|----|----|----|----|----|----|----|----|----|----|----|----|
| | | | | | | | | | | | | | | | | | | | | | | | |

SEEN FROM THE SOUTH



PHOTO BY D. PAŁASECKI

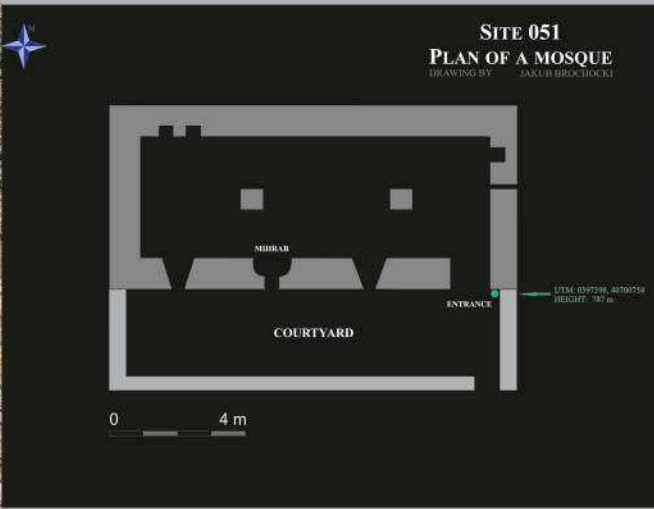


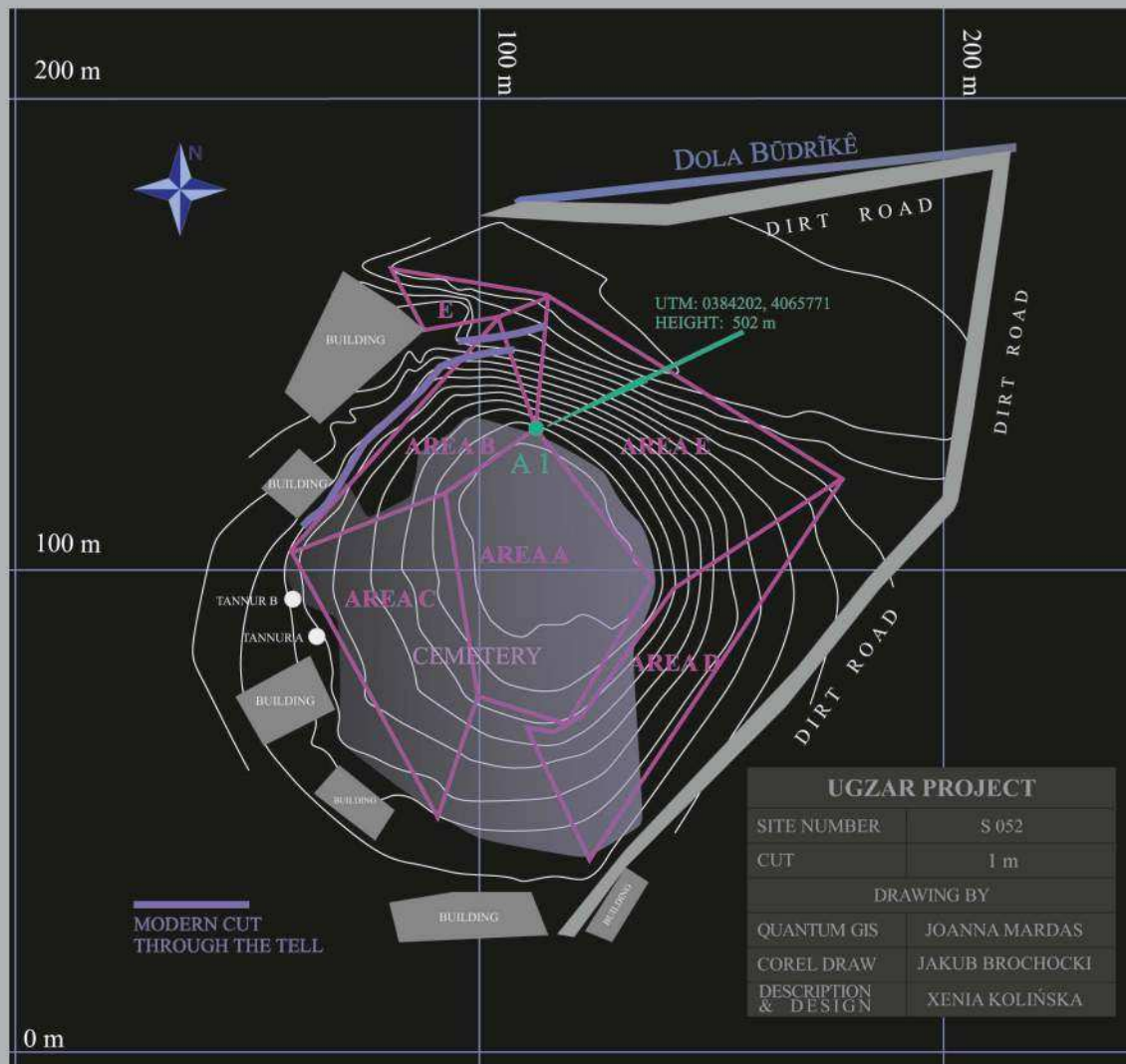
| | |
|------------------------|--------------------|
| SITE NUMBER | S 051 |
| LOCAL NAME | GRDĪ QSRŪKĒ |
| POSITION UTM 38S | 0397319, 4070630 |
| AREA | 2,5 ha |
| TYPE OF SITE | TELL |
| OBSERVATION CONDITIONS | DIFFICULT |
| DAMAGES AND THREATS | HOUSES/ANIMAL PENS |
| AREAS COLLECTED | A B C D |

PERIOD OF OCCUPATION

| PAL | PPN | 0 | 1 | 2 | 3 | 4 | 5 | 6 | 7 | 8 | 9 | 10 | 11 | 12 | 13 | 14 | 15 | 16 | 17 | 18 | 19 | 20 | 21 |
|-----|-----|---|---|---|---|---|---|---|---|---|---|----|----|----|----|----|----|----|----|----|----|----|----|
| | | | | | | | | | | | | | | | | | | | | | | | |

MOSQUE - THE SOUTHERN FACADE, PLAN, THE EASTERN FACADE





| | |
|------------------------|----------------------|
| SITE NUMBER | S 052 |
| LOCAL NAME | GRDĪ BŪDRĪKĒ |
| POSITION UTM 38S | 0394597, 4070701 |
| AREA | 0,95 ha |
| TYPE OF SITE | TELL |
| OBSERVATION CONDITIONS | DIFFICULT |
| DAMAGES AND THREATS | CUTS/CEMETERY/HOUSES |
| AREAS COLLECTED | A B C D E |

PERIOD OF OCCUPATION

| PAL | PPN | 0 | 1 | 2 | 3 | 4 | 5 | 6 | 7 | 8 | 9 | 10 | 11 | 12 | 13 | 14 | 15 | 16 | 17 | 18 | 19 | 20 | 21 |
|-----|-----|---|---|---|---|---|---|---|---|---|---|----|----|----|----|----|----|----|----|----|----|----|----|
| | | | | | | | | | | | | | | | | | | | | | | | |

SEEN FROM THE NORTH





| | |
|------------------------|--|
| SITE NUMBER | S 053 & S 054 |
| LOCAL NAME | GRDĪ KELEKĒ / GRDĪ KELEKĒ 2 |
| POSITION UTM 38S | 0385004, 4066042 - S 053 0384774, 4066011 - S 054 |
| AREA | 0,82 ha - S 053 1,54 ha - S 054 |
| TYPE OF SITE | S 053 & S 054 FLAT SETTLEMENT |
| OBSERVATION CONDITIONS | S 053 DIFFICULT S 054 GOOD |
| DAMAGES AND THREATS | AGRICULTURE |
| AREAS COLLECTED | A B |
| | A B |

PERIOD OF OCCUPATION S 053

| PAL | PPN | 0 | 1 | 2 | 3 | 4 | 5 | 6 | 7 | 8 | 9 | 10 | 11 | 12 | 13 | 14 | 15 | 16 | 17 | 18 | 19 | 20 | 21 |
|-----|-----|---|---|---|---|---|---|---|---|---|---|----|----|----|----|----|----|----|----|----|----|----|----|
| | | | | | | | | | | | | | | | | | | | | | | | |

PERIOD OF OCCUPATION S 054

| PAL | PPN | 0 | 1 | 2 | 3 | 4 | 5 | 6 | 7 | 8 | 9 | 10 | 11 | 12 | 13 | 14 | 15 | 16 | 17 | 18 | 19 | 20 | 21 |
|-----|-----|---|---|---|---|---|---|---|---|---|---|----|----|----|----|----|----|----|----|----|----|----|----|
| | | | | | | | | | | | | | | | | | | | | | | | |

SEEN FROM THE SOUTH-EAST





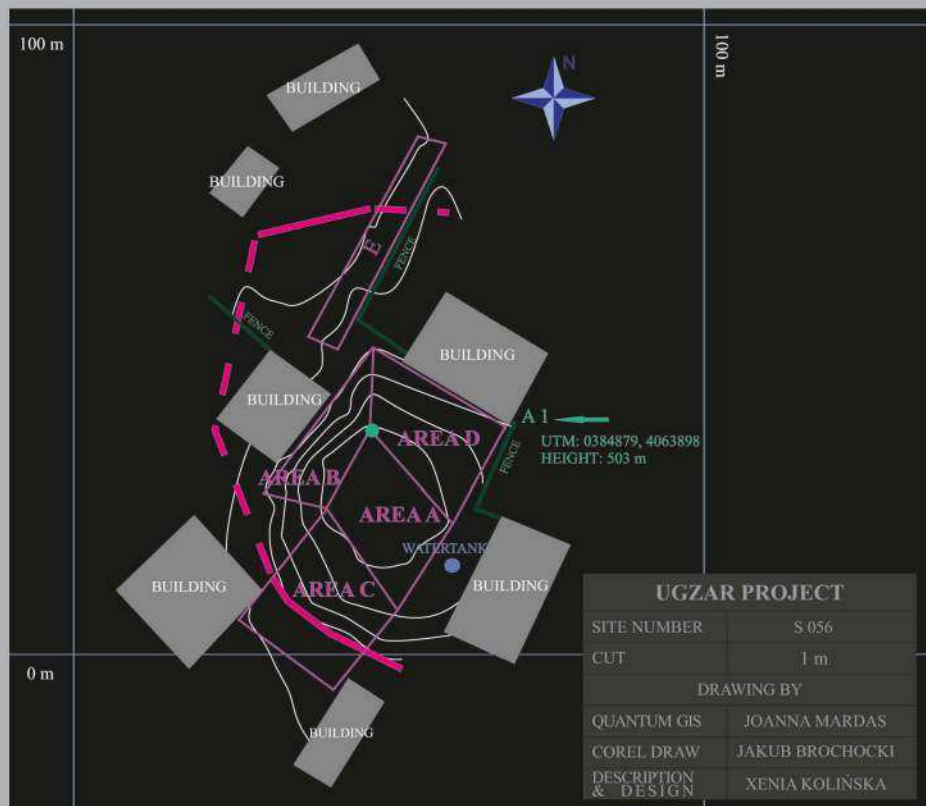
| | |
|------------------------|---|
| SITE NUMBER | S 055 |
| LOCAL NAME | GRDĪ KELEKĒ 3 |
| POSITION UTM 38s | 0383919, 4065279 |
| AREA | 2,31 ha |
| TYPE OF SITE | TELL |
| OBSERVATION CONDITIONS | DIFFICULT |
| DAMAGES AND THREATS | HOUSES/GARDEN/BUILDING ACTIVITIES/ROADS/SITE IS LEVELLED |
| AREAS COLLECTED | A B |

PERIOD OF OCCUPATION

| PAL | PPN | 0 | 1 | 2 | 3 | 4 | 5 | 6 | 7 | 8 | 9 | 10 | 11 | 12 | 13 | 14 | 15 | 16 | 17 | 18 | 19 | 20 | 21 |
|-----|-----|---|---|---|---|---|---|---|---|---|---|----|----|----|----|----|----|----|----|----|----|----|----|
| | | | | | | | | | | | | | | | | | | | | | | | |

SEEN FROM THE SOUTH





| | |
|------------------------|----------------------|
| SITE NUMBER | S 056 |
| LOCAL NAME | GRDĪ TLBŪK |
| POSITION UTM 38s | 0384857, 4063850 |
| AREA | 0,25 ha |
| TYPE OF SITE | TELL |
| OBSERVATION CONDITIONS | DIFFICULT |
| DAMAGES AND THREATS | HOUSES/CEMETERY/CUTS |
| AREAS COLLECTED | A B C D E |

PERIOD OF OCCUPATION

| PAL | PPN | 0 | 1 | 2 | 3 | 4 | 5 | 6 | 7 | 8 | 9 | 10 | 11 | 12 | 13 | 14 | 15 | 16 | 17 | 18 | 19 | 20 | 21 |
|-----|-----|---|---|---|---|---|---|---|---|---|---|----|----|----|----|----|----|----|----|----|----|----|----|
| | | | | | | | | | | | | | | | | | | | | | | | |

SEEN FROM THE EAST



PHOTO BY A. SMILGŪN



SEEN FROM THE SOUTH-WEST



SEEN FROM THE EAST

SEEN FROM THE NORTH-WEST



| | |
|------------------------|------------------------|
| SITE NUMBER | S 057 |
| LOCAL NAME | XRABE KÜŞKÊ |
| POSITION UTM 38s | 0382133, 4036967 |
| AREA | 0,5 ha |
| TYPE OF SITE | RUIN |
| OBSERVATION CONDITIONS | POOR |
| DAMAGES AND THREATS | CUTS |
| AREAS COLLECTED | MATERIAL NOT COLLECTED |

PERIOD OF OCCUPATION

| PAL | PPN | 0 | 1 | 2 | 3 | 4 | 5 | 6 | 7 | 8 | 9 | 10 | 11 | 12 | 13 | 14 | 15 | 16 | 17 | 18 | 19 | 20 | 21 | |
|-----|-----|---|---|---|---|---|---|---|---|---|---|----|----|----|----|----|----|----|----|----|----|----|----|--|
| | | | | | | | | | | | | | | | | | | | | | | | | |

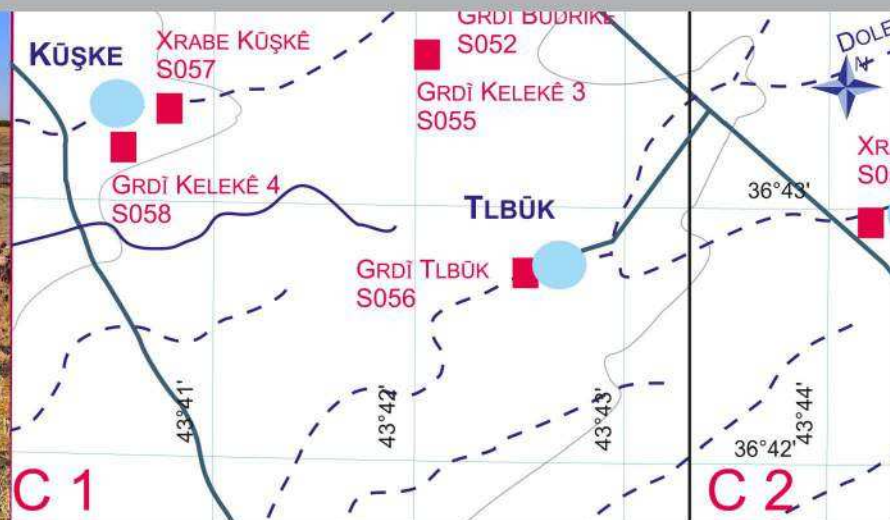




PHOTO BY D. PANEKOU

AXE - UBAID PERIOD

| | |
|------------------------|-----------------------|
| SITE NUMBER | S 058 |
| LOCAL NAME | GRDĪ KELEKĒ 4 |
| POSITION UTM 38s | 0381773, 4064732 |
| AREA | ? |
| TYPE OF SITE | FLAT SETTLEMENT (?) |
| OBSERVATION CONDITIONS | POOR |
| DAMAGES AND THREATS | HOUSES/GARDEN/ORCHARD |
| AREAS COLLECTED | A |

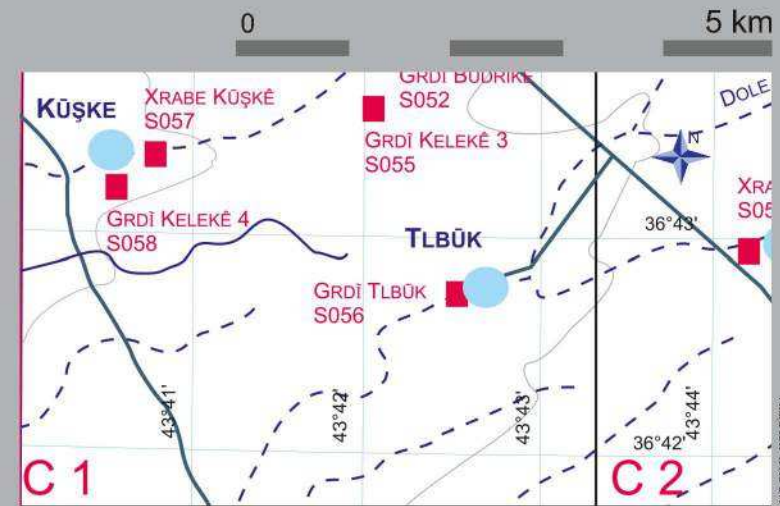
PERIOD OF OCCUPATION

| PAL | PPN | 0 | 1 | 2 | 3 | 4 | 5 | 6 | 7 | 8 | 9 | 10 | 11 | 12 | 13 | 14 | 15 | 16 | 17 | 18 | 19 | 20 | 21 |
|-----|-----|---|---|---|---|---|---|---|---|---|---|----|----|----|----|----|----|----|----|----|----|----|----|
| | | | | | | | | | | | | | | | | | | | | | | | |

SEEN FROM THE NORTH



PHOTO BY A. SHELJEN



MAP BY X. KOLINSKA

| | |
|------------------------|---------------------------------------|
| SITE NUMBER | S 059 |
| LOCAL NAME | XRABE PĪRXŪLĪ |
| POSITION UTM 38s | 0387160, 4064162 |
| AREA | 0,5 ha |
| TYPE OF SITE | FLAT SETTLEMENT |
| OBSERVATION CONDITIONS | POOR |
| DAMAGES AND THREATS | HOUSES/ANIMAL PEN CUTS/GARDEN/ORCHARD |
| AREAS COLLECTED | MATERIAL NOT COLLECTED |

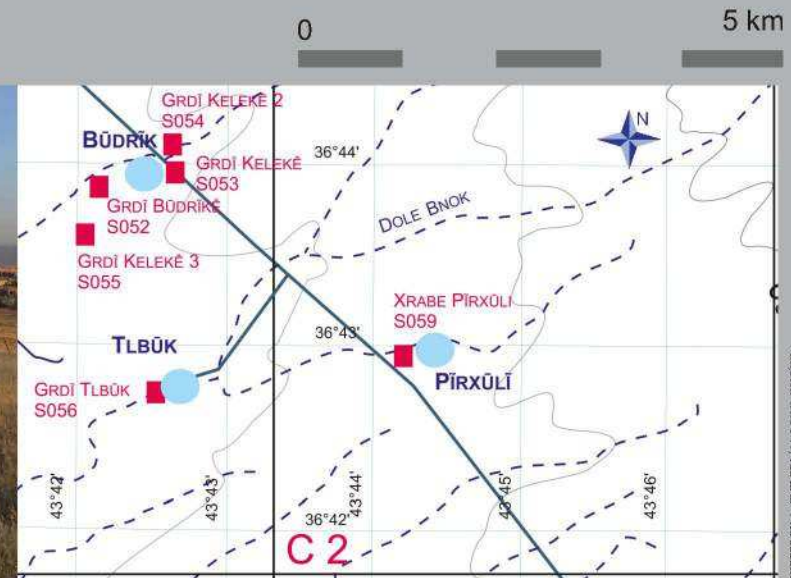


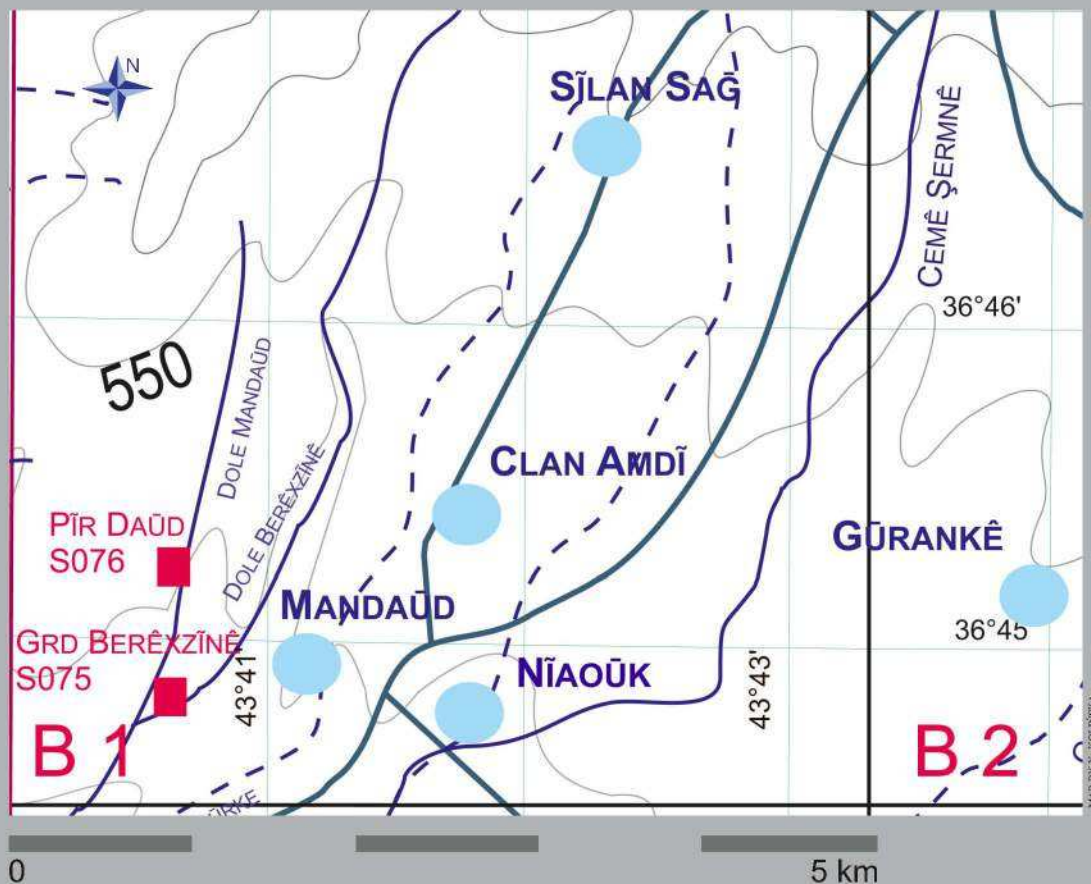
SEEN FROM THE SOUTH

PERIOD OF OCCUPATION

| PAL | PPN | 0 | 1 | 2 | 3 | 4 | 5 | 6 | 7 | 8 | 9 | 10 | 11 | 12 | 13 | 14 | 15 | 16 | 17 | 18 | 19 | 20 | 21 |
|-----|-----|---|---|---|---|---|---|---|---|---|---|----|----|----|----|----|----|----|----|----|----|----|----|
| | | | | | | | | | | | | | | | | | | | | | | | |

SEEN FROM THE EAST





| | |
|------------------------|---|
| SITE NUMBER | S 075 |
| LOCAL NAME | GRD BERĒZĪNĒ |
| POSITION UTM 38S | 03819969, 4067496 |
| AREA | 2 ha |
| TYPE OF SITE | FLAT SETTLEMENT |
| OBSERVATION CONDITIONS | POOR |
| DAMAGES AND THREATS | PITS |
| AREAS COLLECTED | COLLECTED SOME SHERDS ALLOVER THE SITE |

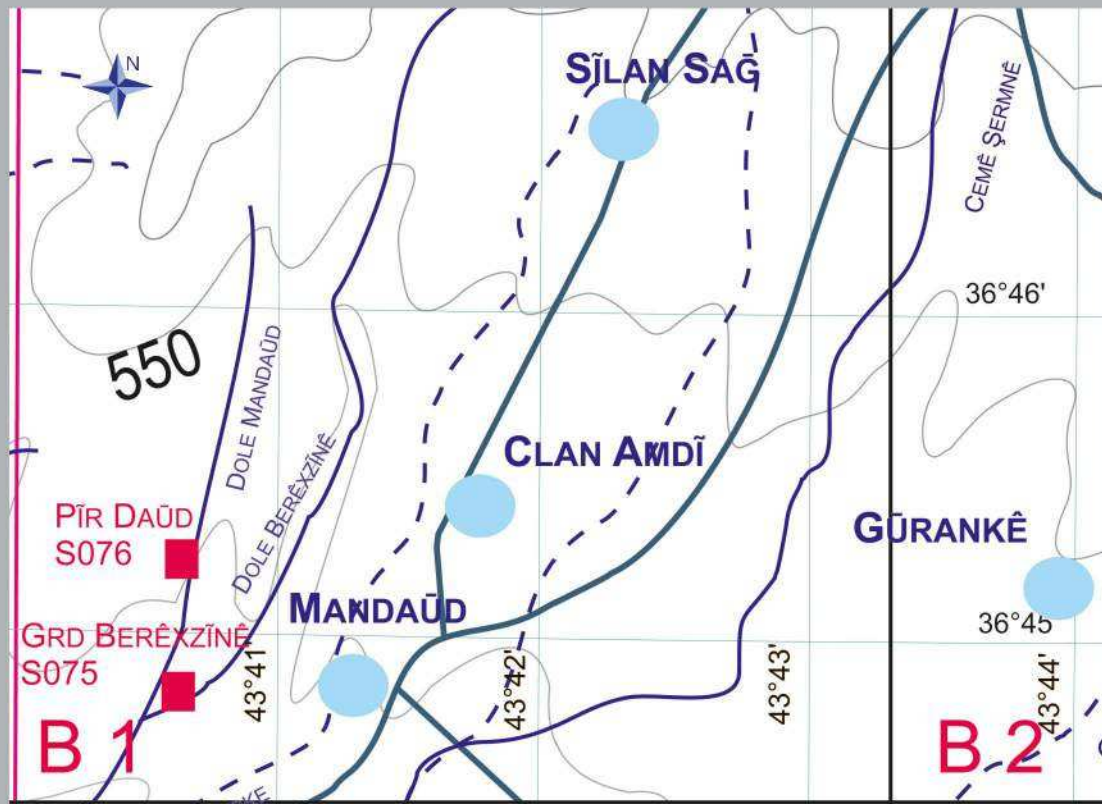
PERIOD OF OCCUPATION

| PAL | PPN | 0 | 1 | 2 | 3 | 4 | 5 | 6 | 7 | 8 | 9 | 10 | 11 | 12 | 13 | 14 | 15 | 16 | 17 | 18 | 19 | 20 | 21 |
|-----|-----|---|---|---|---|---|---|---|---|---|---|----|----|----|----|----|----|----|----|----|----|----|----|
| | | | | | | | | | | | | | | | | | | | | | | | |



PHOTO BY D. PASSEK

VIEW TOWARDS THE SOUTH-WEST



0 5 km

| | |
|------------------------|------------------------|
| SITE NUMBER | S 076 |
| LOCAL NAME | PİR DAÜD |
| POSITION UTM 38S | 0382098, 4068426 |
| AREA | 1 ha |
| TYPE OF SITE | FLAT SETTLEMENT |
| OBSERVATION CONDITIONS | POOR |
| DAMAGES AND THREATS | PITS |
| AREAS COLLECTED | MATERIAL NOT COLLECTED |

PERIOD OF OCCUPATION

| PAL | PPN | 0 | 1 | 2 | 3 | 4 | 5 | 6 | 7 | 8 | 9 | 10 | 11 | 12 | 13 | 14 | 15 | 16 | 17 | 18 | 19 | 20 | 21 |
|-----|-----|---|---|---|---|---|---|---|---|---|---|----|----|----|----|----|----|----|----|----|----|----|----|
| | | | | | | | | | | | | | | | | | | | | | | | |

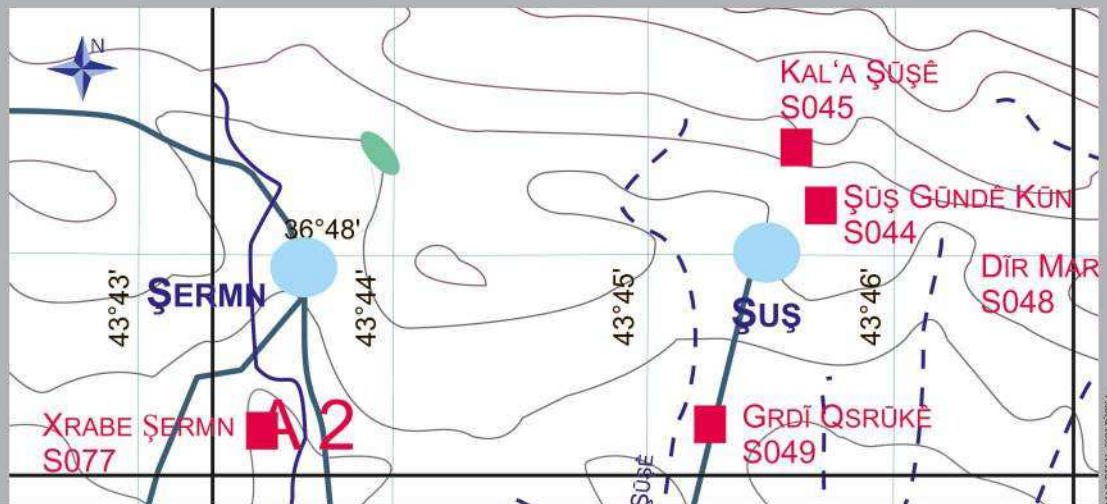
VIEW TOWARDS THE WEST



VIEW TOWARDS THE EAST



PHOTO BY D. JANICKI



0 5 km

| | |
|------------------------|------------------------|
| SITE NUMBER | S 077 |
| LOCAL NAME | XRABE ŞERMN |
| POSITION UTM 38S | 0386250, 4072418 |
| AREA | 4 ha <i>ca</i> |
| TYPE OF SITE | TELL WITH LOWER CITY |
| OBSERVATION CONDITIONS | POOR |
| DAMAGES AND THREATS | AGRICULTURE |
| AREAS COLLECTED | MATERIAL NOT COLLECTED |

PERIOD OF OCCUPATION

| PAL | PPN | 0 | 1 | 2 | 3 | 4 | 5 | 6 | 7 | 8 | 9 | 10 | 11 | 12 | 13 | 14 | 15 | 16 | 17 | 18 | 19 | 20 | 21 |
|-----|-----|---|---|---|---|---|---|---|---|---|---|----|----|----|----|----|----|----|----|----|----|----|----|
| | | | | | | | | | | | | | | | | | | | | | | | |

VIEW TOWARDS THE WEST



VIEW TOWARDS THE EAST

