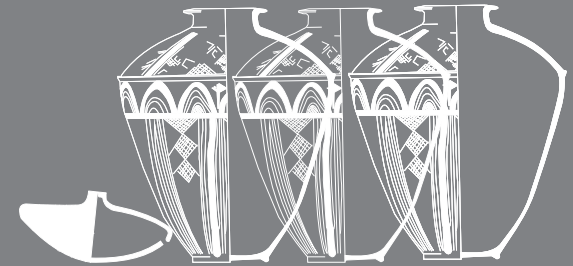


UGZAR PROJECT 2016
CATALOGUE OF THE SITES

GREATER ZAB EASTERN BANK
HARĪR PLAIN
DÊRÊ PLAIN
BERĪ MOUNTAINS
BABACĪSAK MOUNTAINS



UGZAR PROJECT RULES OF TRANSLITERATION

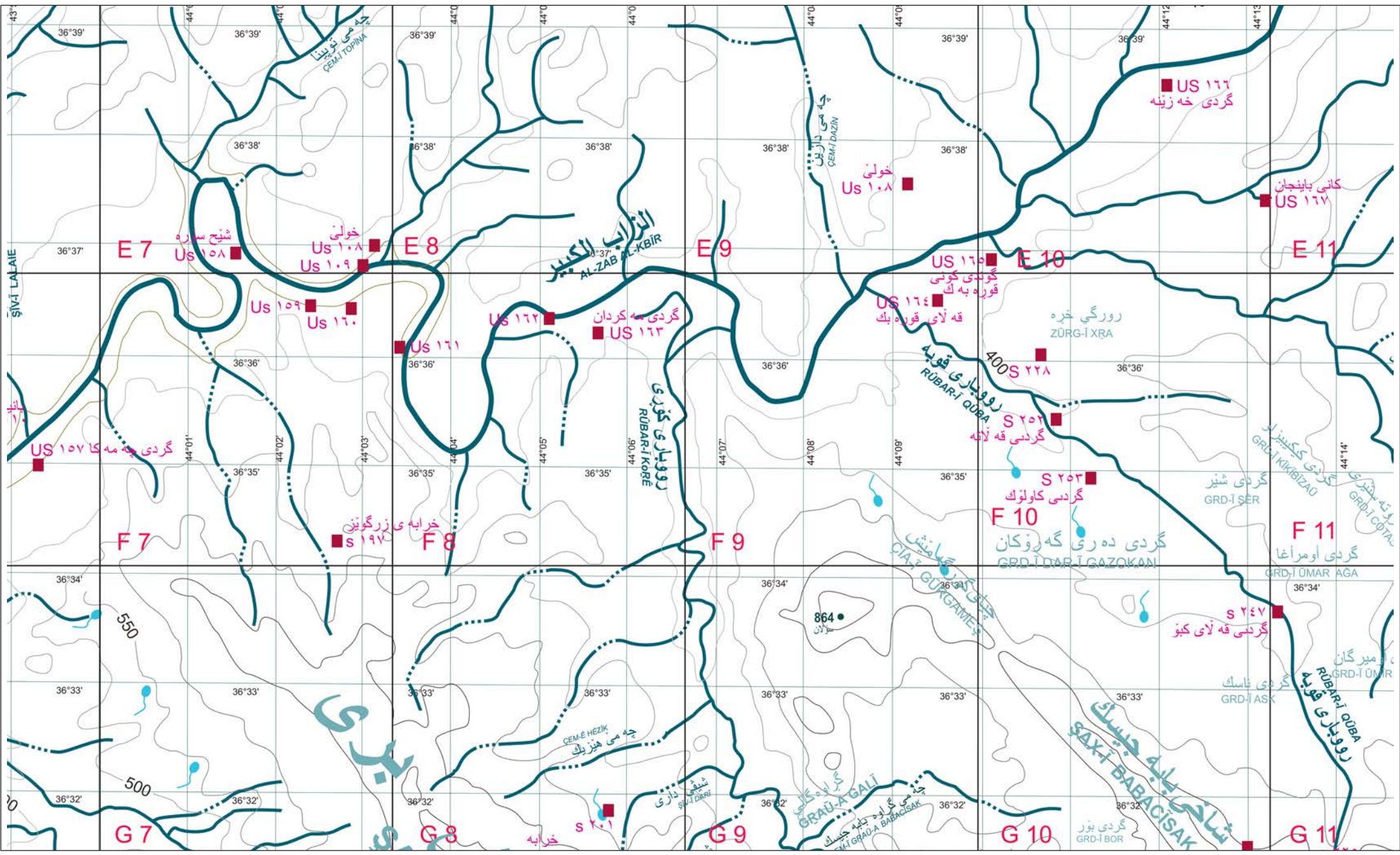


ARABIC	TRANSLITERATION	KURDISH	TRANSLITERATION
ا	A	ا	A
ب	B	ب	B
پ	-	پ	P
ت	T	ت	T
ث	T	-	-
ج	Ġ	ج	C
چ	-	چ	Ç
ح	H	ح	H
خ	H	خ	X
د	D	د	D
ذ	D	-	-
ر	R	ر	R
ز	Z	ز	Z
ژ	-	ژ	Ž
س	S	س	S
ش	Ş	ش	Ş
ص	Ş	-	-
ض	D	-	-
ط	T	-	-
ظ	Z	-	-
ع	‘	ع	‘
غ	Ġ	غ	Ġ
ف	F	فا	F
ف	-	ثفا	V
ق	Q	قا	Q
ك	K	كا	K
گ	-	گا	G
ل	-	لا	L
ل	L	ل	L
م	M	م	M
ن	N	ن	N
و	-	وا	O
ه	H	ه	AE
و	Ū	و	Ū
و	-	وو	Û
ئ	-	ئا	Ê
ي	Ï	يا	Ï

UPPER GREATER ZAB
 ARCHAEOLOGICAL RECONNAISSANCE
 SEASON 2016



REGION: GREATER ZAB VALLEY. NORTHERN PART OF EASTERN BANK.





S 198 / US 161

BING © DIGITALGLOBE © MICROSOFT CORPORATION © HERE

0 100 m

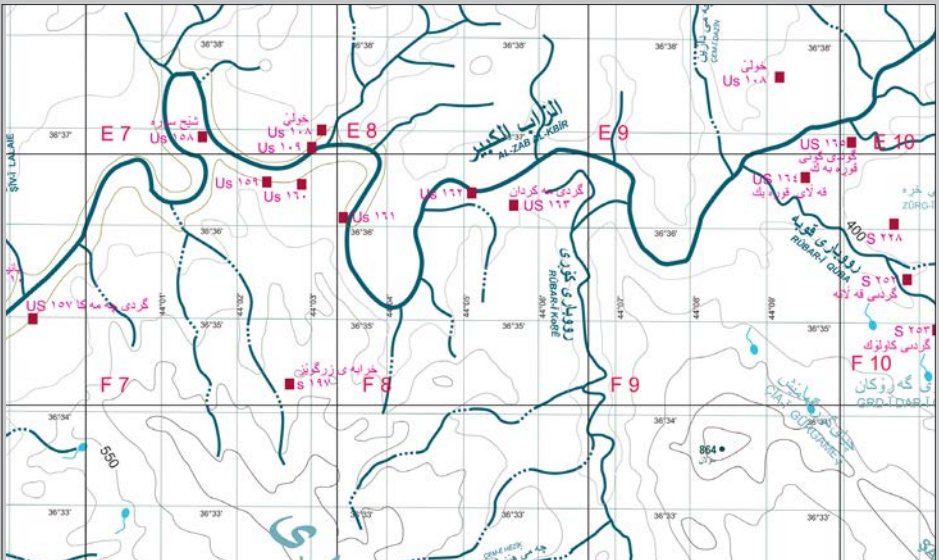


FIELD NUMBER	S 198
NUMBER ON THE MAP	US ۱۶۱
LOCAL NAME	NO NAME
POSITION DTM	36°36'05"N 44°03'27"E
AREA	0,79 ha
TYPE OF SITE	FLAT SETTLEMENT
OBSERVATION CONDITIONS	GOOD
DAMAGES AND THREATS	AGRICULTURE
AREAS COLLECTED	A B

PERIOD OF OCCUPATION																							
PAL	PPN	0	1	2	3	4	5	6	7	8	9	10	11	12	13	14	15	16	17	18	19	20	21

REGION: GREATER ZAB VALLEY. EASTERN BANK.

MAP BY XENIA KOLIŃSKA



US 161. SEEN FROM THE NORTH-EAST.

PHOTO BY DARIUSZ PIASECKI 2016





BING © DIGITALGLOBE © MICROSOFT CORPORATION © HERE

0 600 m



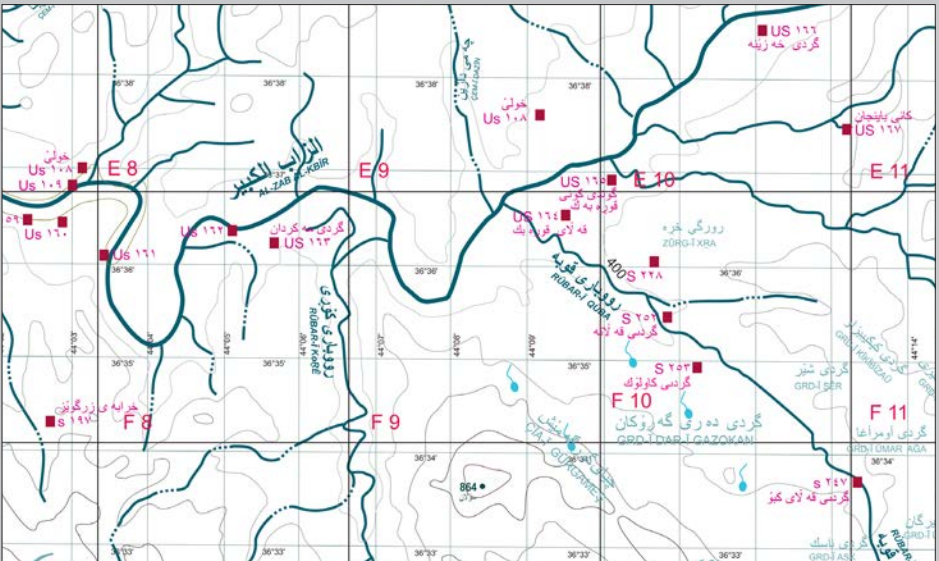
FIELD NUMBER	S 224
NUMBER ON THE MAP	US ١٦٤
LOCAL NAME	QAĻA-Ī QURĀBAK
POSITION DTM	36°36'38"N 44°09'33"E
AREA	33,86 ha
TYPE OF SITE	TELL WITH LOWER CITY
OBSERVATION CONDITIONS	GOOD / DIFFICULT / ROAD CUTS / CANALS / POLES
DAMAGES AND THREATS	AGRICULTURE
AREAS COLLECTED	A B C D

TENTATIVE CHRONOLOGY

PAL	PPN	0	1	2	3	4	5	6	7	8	9	10	11	12	13	14	15	16	17	18	19	20	21	

REGION: GREATER ZAB VALLEY. EASTERN BANK.

MAP BY XENIA KOLIŃSKA



US 164. SEEN FROM THE EAST.

PHOTO BY DARIUSZ PIASECKI 2016





S 235 / US 166

BING © DIGITALGLOBE © MICROSOFT CORPORATION © HERE

0 300 m



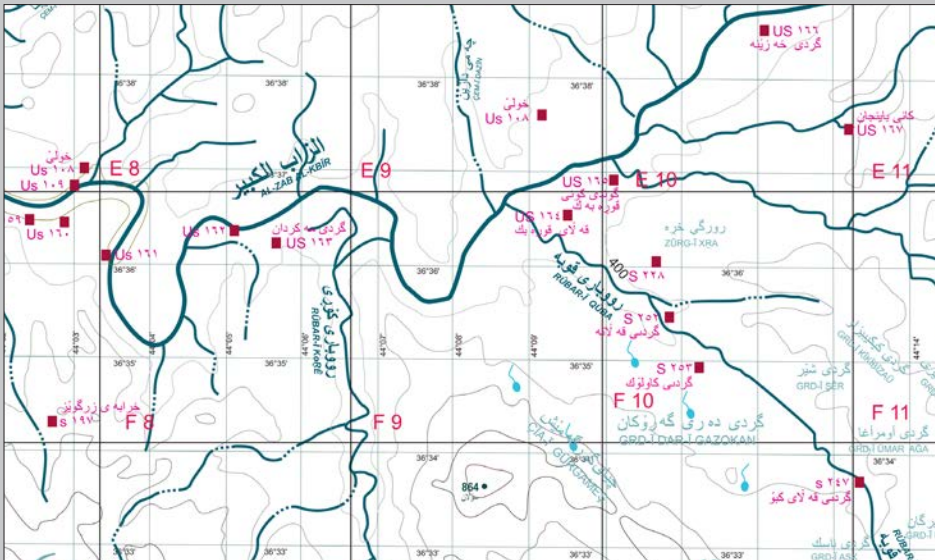
FIELD NUMBER	S 235
NUMBER ON THE MAP	US ۱۶۶
LOCAL NAME	GRD-Ī XAZÊNA
POSITION DTM	36°38'30"N 44°12'06"E
AREA	4,18 ha
TYPE OF SITE	TELL
OBSERVATION CONDITIONS	DIFFICULT
DAMAGES AND THREATS	AGRICULTURE / GARDEN ROAD / CUTS / HOUSES
AREAS COLLECTED	WHOLE SITE

PERIOD OF OCCUPATION

PAL	PPN	0	1	2	3	4	5	6	7	8	9	10	11	12	13	14	15	16	17	18	19	20	21

REGION: GREATER ZAB VALLEY. EASTERN BANK.

MAP BY XENIA KOLIŃSKA



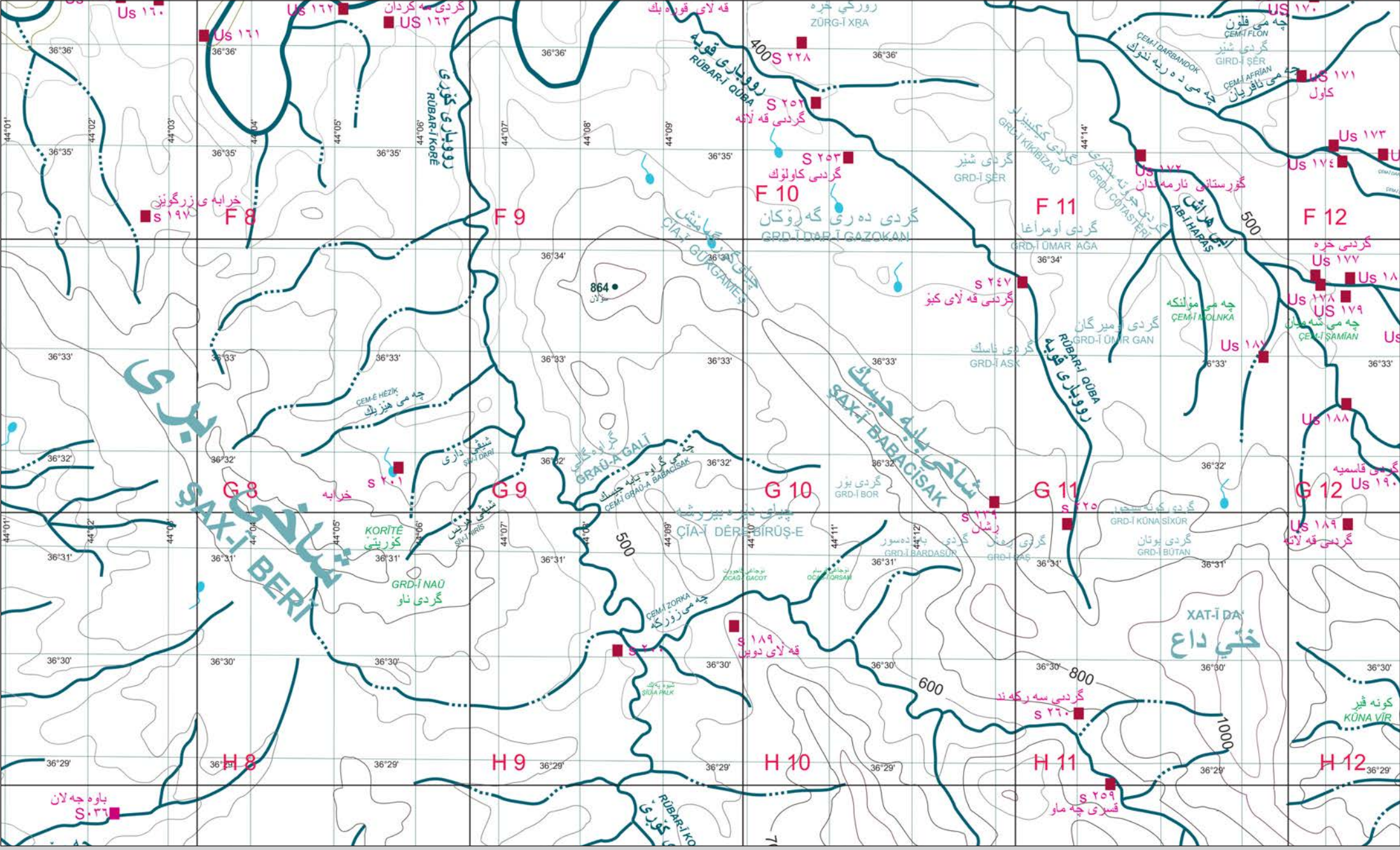
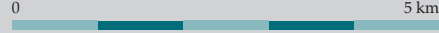
US 166. SEEN FROM THE SOUTH.

PHOTO BY DARIUSZ PIASECKI 2016





REGIONS: BERĪ & BABACĪSAK MOUNTAINS (BAŪAXALAN PLATEAU (ŞAX-Ī BERĪ & ŞAX-Ī BABACĪSAK).
 QŪBA, KORĒ & MAŪRAN CREEK VALLEYS.





BING © DIGITALGLOBE © MICROSOFT CORPORATION © HERE

0 300 m



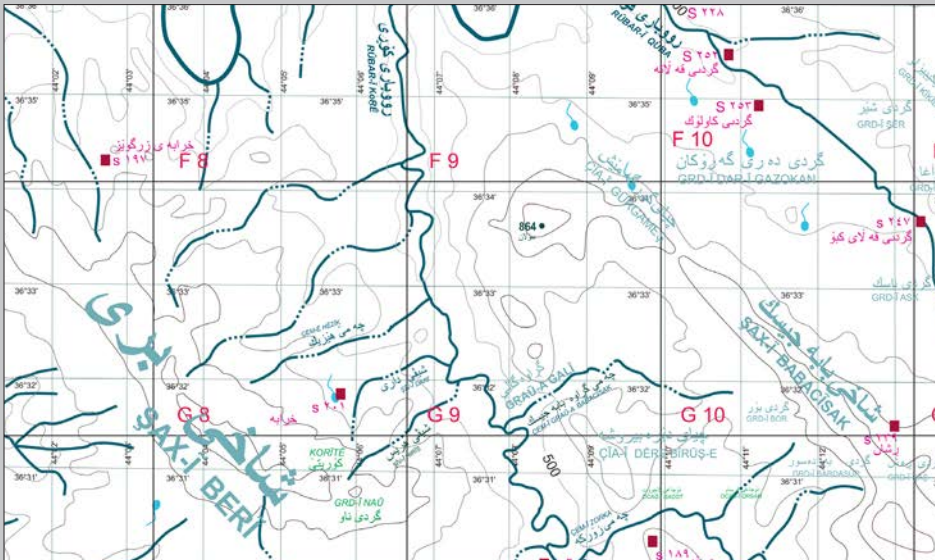
FIELD NUMBER	S 197
NUMBER ON THE MAP	-
LOCAL NAME	XARABE-Ī ZRGŪÊS
POSITION DTM	36°34'18"N 44°02'43"E
AREA	? ha
TYPE OF SITE	FLAT SETTLEMENT / CEMETERY
OBSERVATION CONDITIONS	DIFFICULT
DAMAGES AND THREATS	HOUSES / GARDEN / AGRICULTURE BUILDING ACTIVITIES
AREAS COLLECTED	A B

PERIOD OF OCCUPATION

PAL	PPN	0	1	2	3	4	5	6	7	8	9	10	11	12	13	14	15	16	17	18	19	20	21	

REGION: BERĪ MOUNTAINS.

MAP BY XENIA KOLIŃSKA



US 197. CEMETERY SEEN FROM THE WEST.

PHOTO BY XENIA KOLIŃSKA. 2016





BING © DIGITALGLOBE © MICROSOFT CORPORATION © HERE

0 100 m



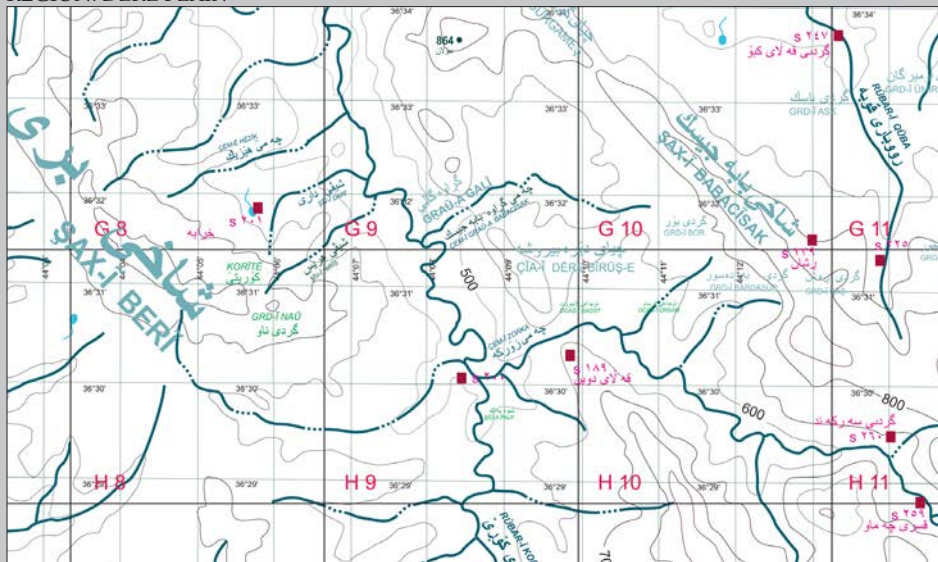
FIELD NUMBER	S 200
NUMBER ON THE MAP	-
LOCAL NAME	DĪRA BIRUŞ
POSITION DTM	36°30'03"N 44°08'27"E
AREA	1,8 ha
TYPE OF SITE	RUIN
OBSERVATION CONDITIONS	DIFFICULT
DAMAGES AND THREATS	AGRICULTURE / ILLICIT EXCAVATIONS
AREAS COLLECTED	A B C

PERIOD OF OCCUPATION

PAL	PPN	0	1	2	3	4	5	6	7	8	9	10	11	12	13	14	15	16	17	18	19	20	21

REGION: DÊRÊ PLAIN

MAP BY XENIA KOLIŃSKA



US 200. SEEN FROM THE SOUTH.

PHOTO BY XENIA KOLIŃSKA. 2016





S 189

BING © DIGITALGLOBE © MICROSOFT CORPORATION © HERE

0 300 m



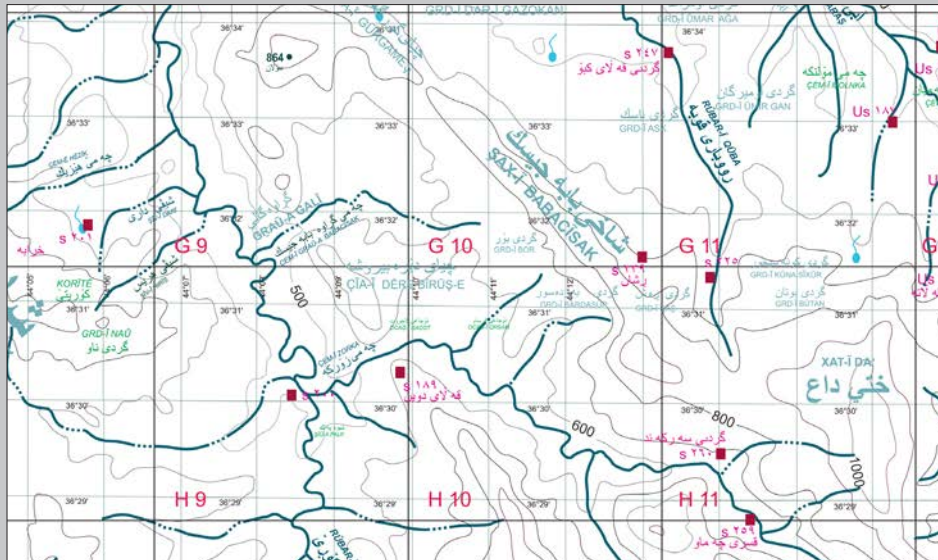
FIELD NUMBER	S 189									
NUMBER ON THE MAP	-									
LOCAL NAME	QAĻA-Ī & XARABE-Ī DĪŪĪN									
POSITION DTM	36°30'18"N 44°09'51"E									
AREA	2,55 ha									
TYPE OF SITE	RUIN / FORT / KHAN									
OBSERVATION CONDITIONS	DIFFICULT									
DAMAGES AND THREATS	ROAD / CEMETERY / PITS									
AREAS COLLECTED	A	B								

PERIOD OF OCCUPATION

PAL	PPN	0	1	2	3	4	5	6	7	8	9	10	11	12	13	14	15	16	17	18	19	20	21

REGION: BABACĪSAK MOUNTAINS.

MAP BY XENIA KOLIŃSKA



US 189. CEMETERY SEEN FROM THE SOUTH.

PHOTO BY DARIUSZ PIASECKI 2016





BING © DIGITALGLOBE © MICROSOFT CORPORATION © HERE

0 100 m

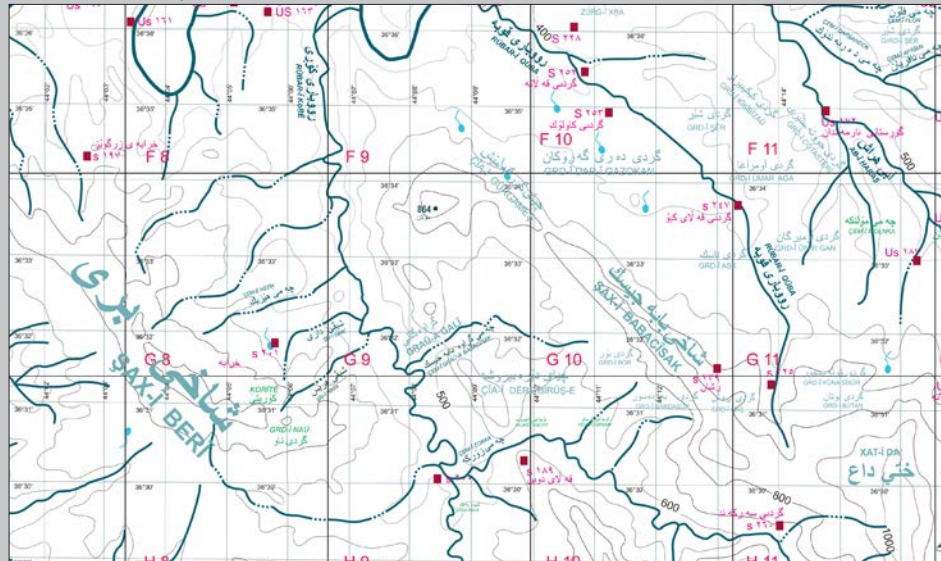


FIELD NUMBER	S 247						
NUMBER ON THE MAP	-						
LOCAL NAME	GRD-Ī QAĻA-Ī KBOR						
POSITION DTM	36°33'42"N 44°13'21"E						
AREA	1,16 ha						
TYPE OF SITE	TELL						
OBSERVATION CONDITIONS	GOOD						
DAMAGES AND THREATS	HOUSES/POLES/ROADS						
AREAS COLLECTED	A	B	C				

PERIOD OF OCCUPATION																							
PAL	PPN	0	1	2	3	4	5	6	7	8	9	10	11	12	13	14	15	16	17	18	19	20	21

REGION: RIVER QŪBA VALLEY.

MAP BY XENIA KOLIŃSKA



US 247. SEEN FROM THE SOUTH-WEST.

PHOTO BY KAROLINA DO HUU. 2016





BING © DIGITALGLOBE © MICROSOFT CORPORATION © HERE

0 100 m

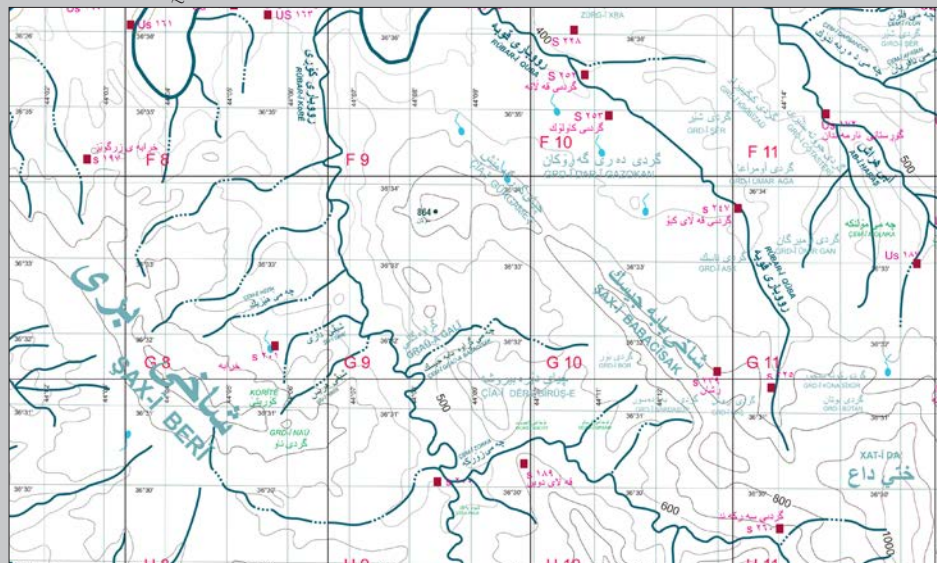


FIELD NUMBER	S 253									
NUMBER ON THE MAP	-									
LOCAL NAME	GRD-Ī KAÜLOK									
POSITION DTM	36°35'27"N 44°10'50"E									
AREA	1,77 ha									
TYPE OF SITE	FLAT SETTLEMENT									
OBSERVATION CONDITIONS	GOOD									
DAMAGES AND THREATS	AGRICULTURE									
AREAS COLLECTED	A	B								

PERIOD OF OCCUPATION																							
PAL	PPN	0	1	2	3	4	5	6	7	8	9	10	11	12	13	14	15	16	17	18	19	20	21

REGION: RIVER QŪBA VALLEY.

MAP BY XENIA KOLIŃSKA



US 253. SEEN FROM THE SOUTH.

PHOTO BY DARIUSZ PIASECKI 2016





BING © DIGITALGLOBE © MICROSOFT CORPORATION © HERE

0 100 m



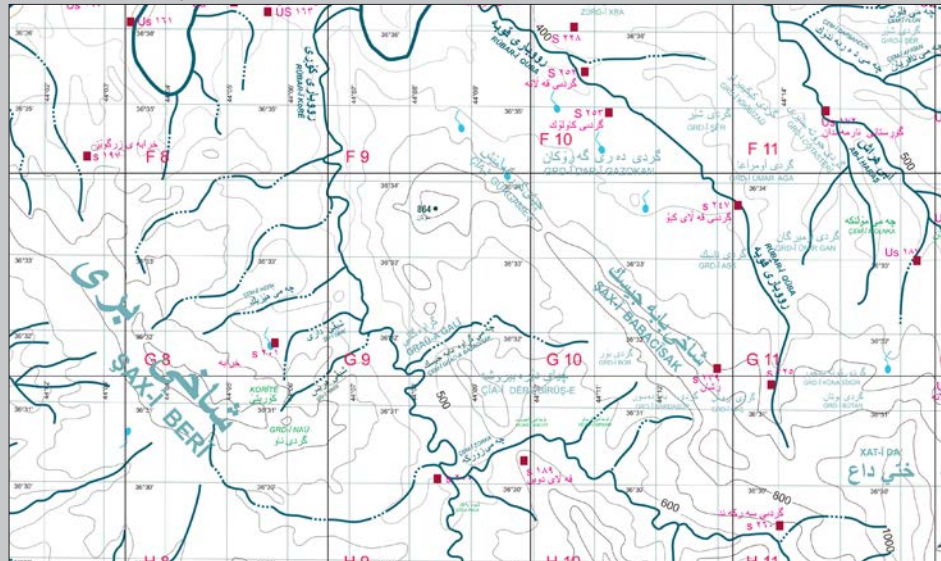
FIELD NUMBER	S 252			
NUMBER ON THE MAP	-			
LOCAL NAME	GRD-Ī QAĻATA			
POSITION DTM	36°35'27"N 44°10'50"E			
AREA	0,37 ha			
TYPE OF SITE	TELL			
OBSERVATION CONDITIONS	DIFFICULT			
DAMAGES AND THREATS	CUTS/GARDEN/ROADS/HOUSES			
AREAS COLLECTED	A	B	C	

TENTATIVE CHRONOLOGY

PAL	PPN	0	1	2	3	4	5	6	7	8	9	10	11	12	13	14	15	16	17	18	19	20	21	

REGION: RIVER QŪBA VALLEY.

MAP BY XENIA KOLIŃSKA



US 252. SEEN FROM THE WEST.

PHOTO BY DARIUSZ PIASECKI 2016





BING © DIGITALGLOBE © MICROSOFT CORPORATION © HERE

0 100 m

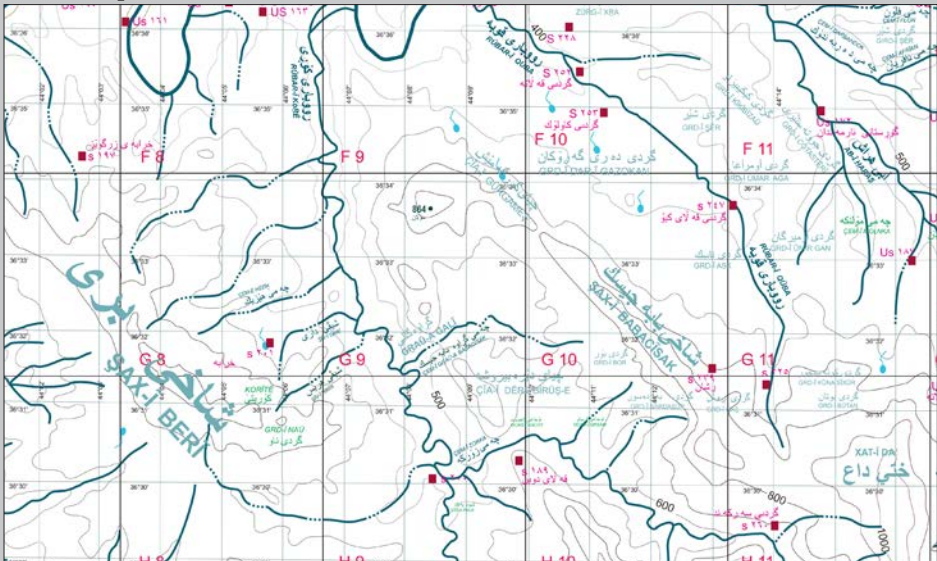
FIELD NUMBER	S 228
NUMBER ON THE MAP	-
LOCAL NAME	XARABE-Ī BRĒK
POSITION DTM	36°36'03"N 44°10'39"E
AREA	0,65 ha
TYPE OF SITE	FLAT SETTLEMENTS
OBSERVATION CONDITIONS	DIFFICULT
DAMAGES AND THREATS	CUTS/GARDEN
AREAS COLLECTED	A

TENTATIVE CHRONOLOGY

PAL	PPN	0	1	2	3	4	5	6	7	8	9	10	11	12	13	14	15	16	17	18	19	20	21

REGION: XRA PLATEAU.

MAP BY XENIA KOLIŃSKA



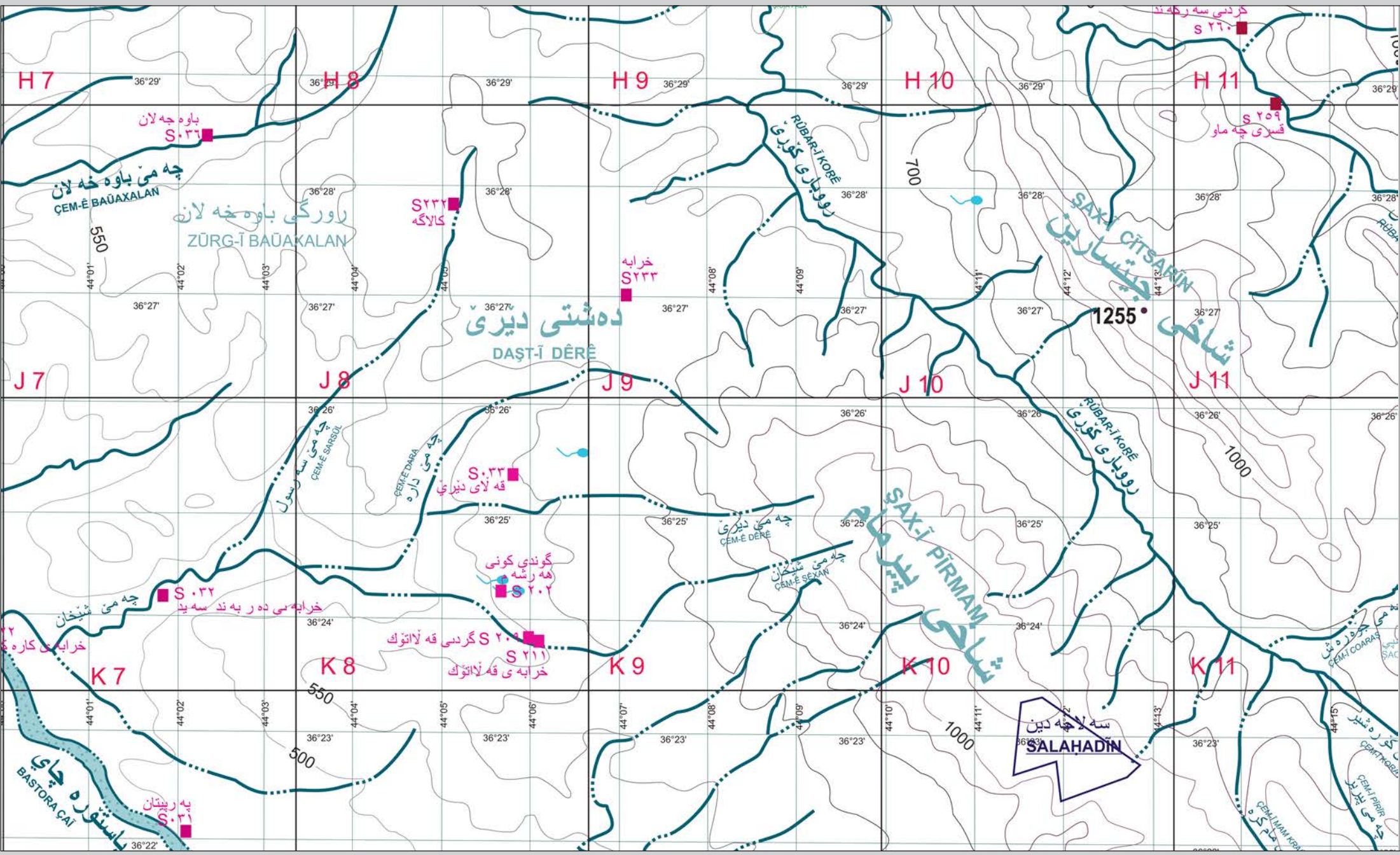
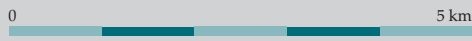
US 228. SEEN FROM THE SOUTH-WEST.

PHOTO BY XENIA KOLIŃSKA. 2016





REGIONS: BAŪAXALAN PLATEAU (ZŪRG-Ī BAŪAXALAN) & DĒRĒ PLAIN (DAŠT-Ī DĒRĒ).





BING © DIGITALGLOBE © MICROSOFT CORPORATION © HERE

0 300 m



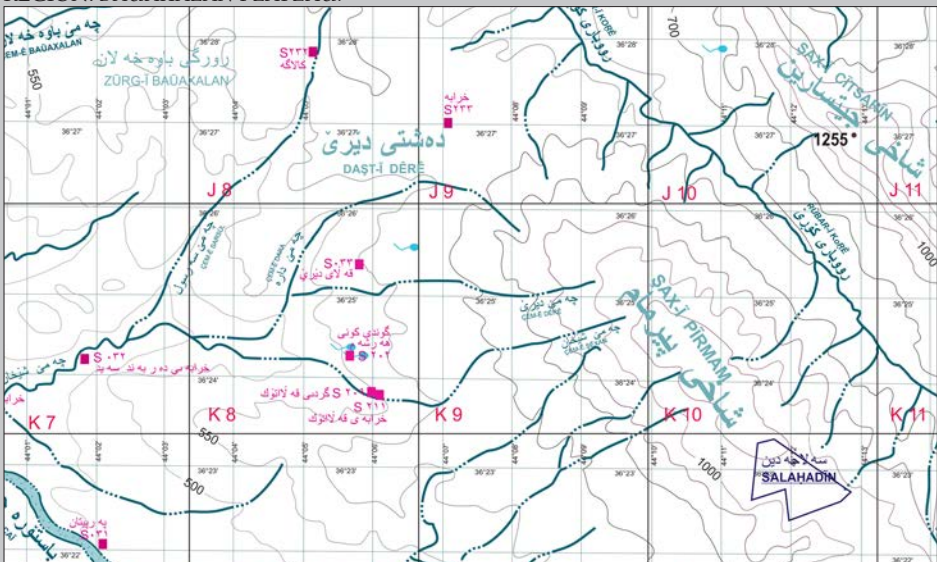
FIELD NUMBER	S 232						
NUMBER ON THE MAP	-						
LOCAL NAME	KALAGA						
POSITION DTM	36°27'35"N 44°05'08"E						
AREA	3,63 ha						
TYPE OF SITE	FLAT SETTLEMENTS						
OBSERVATION CONDITIONS	GOOD						
DAMAGES AND THREATS	AGRICULTURE						
AREAS COLLECTED	A	B	C				

TENTATIVE CHRONOLOGY

PAL	PPN	0	1	2	3	4	5	6	7	8	9	10	11	12	13	14	15	16	17	18	19	20	21

REGION: BAÜAXALAN PLATEAU.

MAP BY XENIA KOLIŃSKA



US 232. SEEN FROM THE NORTH-EAST.

PHOTO BY DARIUSZ PIASECKI 2016





BING © DIGITALGLOBE © MICROSOFT CORPORATION © HERE

0 100 m

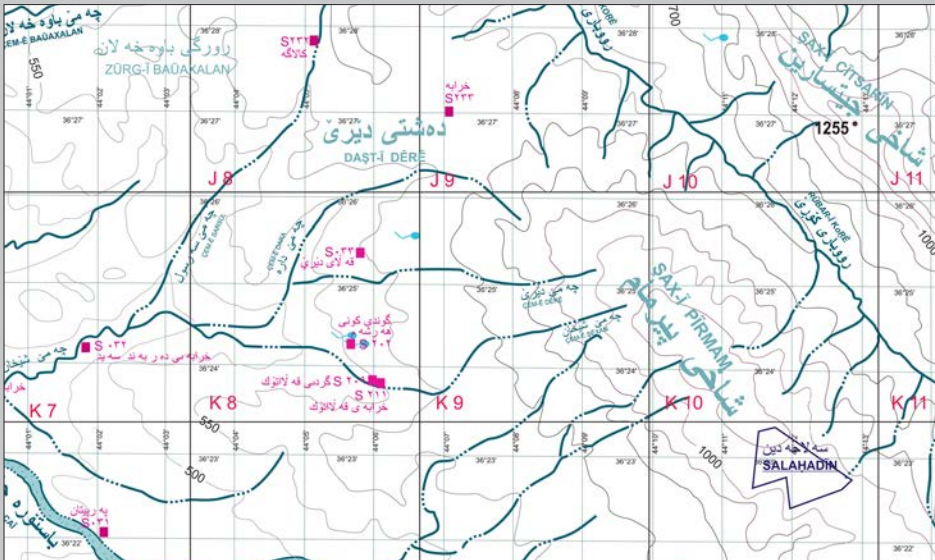


FIELD NUMBER	S 202
NUMBER ON THE MAP	-
LOCAL NAME	GÜND-Ī KÜN-Ī HARŞAM
POSITION DTM	36°24'15"N 44°05'40"E
AREA	NO DATA
TYPE OF SITE	RUIN
OBSERVATION CONDITIONS	DIFFICULT
DAMAGES AND THREATS	ILLICIT EXCAVATIONS
AREAS COLLECTED	WHOLE

PERIOD OF OCCUPATION																							
PAL	PPN	0	1	2	3	4	5	6	7	8	9	10	11	12	13	14	15	16	17	18	19	20	21

REGION: DÊRÊ PLAIN.

MAP BY XENIA KOLIŃSKA



US 202. SEEN FROM THE SOUTH.

PHOTO BY RAFAL KOLIŃSKI 2016





BING © DIGITALGLOBE © MICROSOFT CORPORATION © HERE © 2016 DigitalGlobe © 2016 GeoEye © 2016

0 100 m

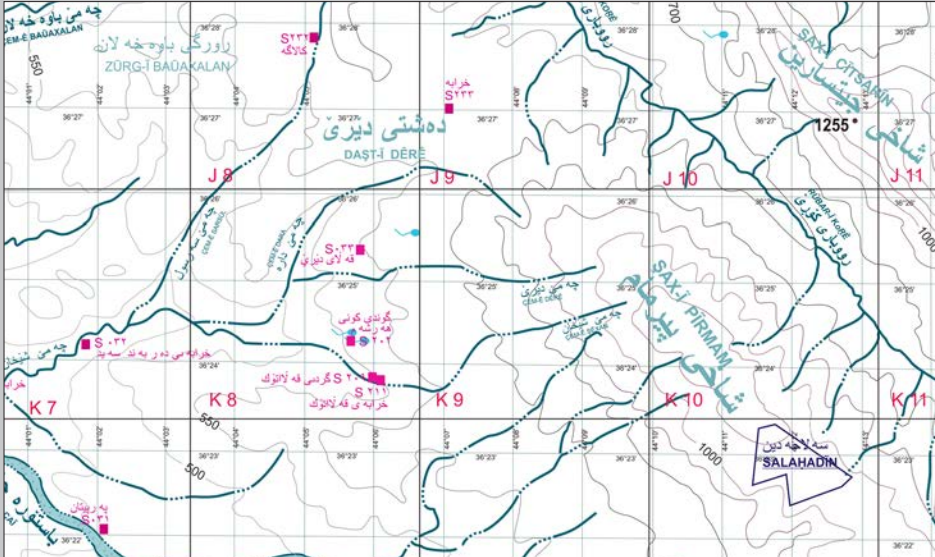


FIELD NUMBER	S 209
NUMBER ON THE MAP	-
LOCAL NAME	GRD-Ī QAĻATOK
POSITION DTM	36°23'48"N 44°05'57"E
AREA	1,47 ha
TYPE OF SITE	TELL
OBSERVATION CONDITIONS	GOOD
DAMAGES AND THREATS	EROSION / PITS
AREAS COLLECTED	A B C

PERIOD OF OCCUPATION																							
PAL	PPN	0	1	2	3	4	5	6	7	8	9	10	11	12	13	14	15	16	17	18	19	20	21

REGION: DÊRÊ PLAIN.

MAP BY XENIA KOLIŃSKA



US 209. SEEN FROM THE SOUTH.

PHOTO BY XENIA KOLIŃSKA. 2016





BING © DIGITALGLOBE © MICROSOFT CORPORATION © HERE

0 100 m



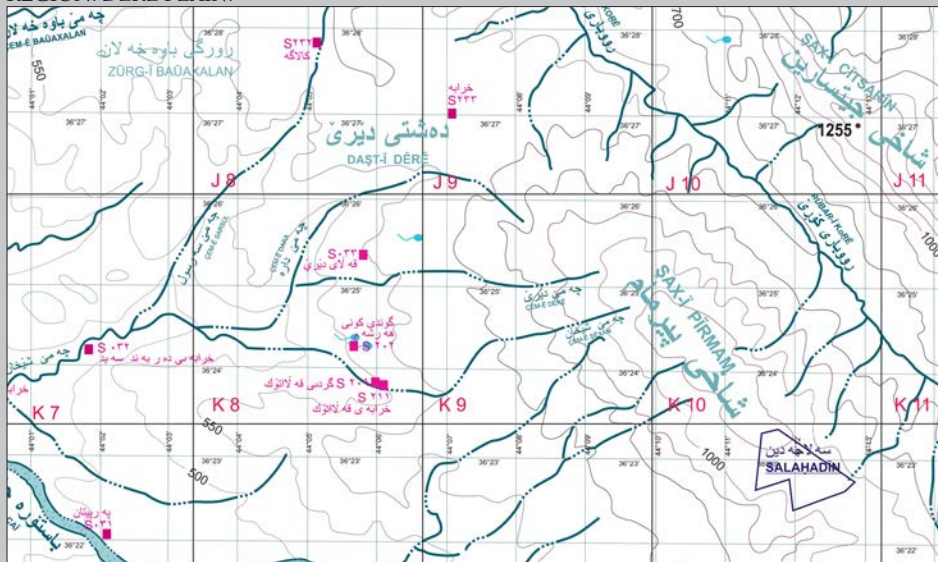
FIELD NUMBER	S 211
NUMBER ON THE MAP	-
LOCAL NAME	XARABE-Ī QALATOK
POSITION DTM	36°23'47"N 44°06'04"E
AREA	0,86 ha
TYPE OF SITE	RUIN
OBSERVATION CONDITIONS	GOOD
DAMAGES AND THREATS	AGRICULTURE
AREAS COLLECTED	A

PERIOD OF OCCUPATION

PAL	PPN	0	1	2	3	4	5	6	7	8	9	10	11	12	13	14	15	16	17	18	19	20	21

REGION: DÊRÊ PLAIN.

MAP BY XENIA KOLIŃSKA



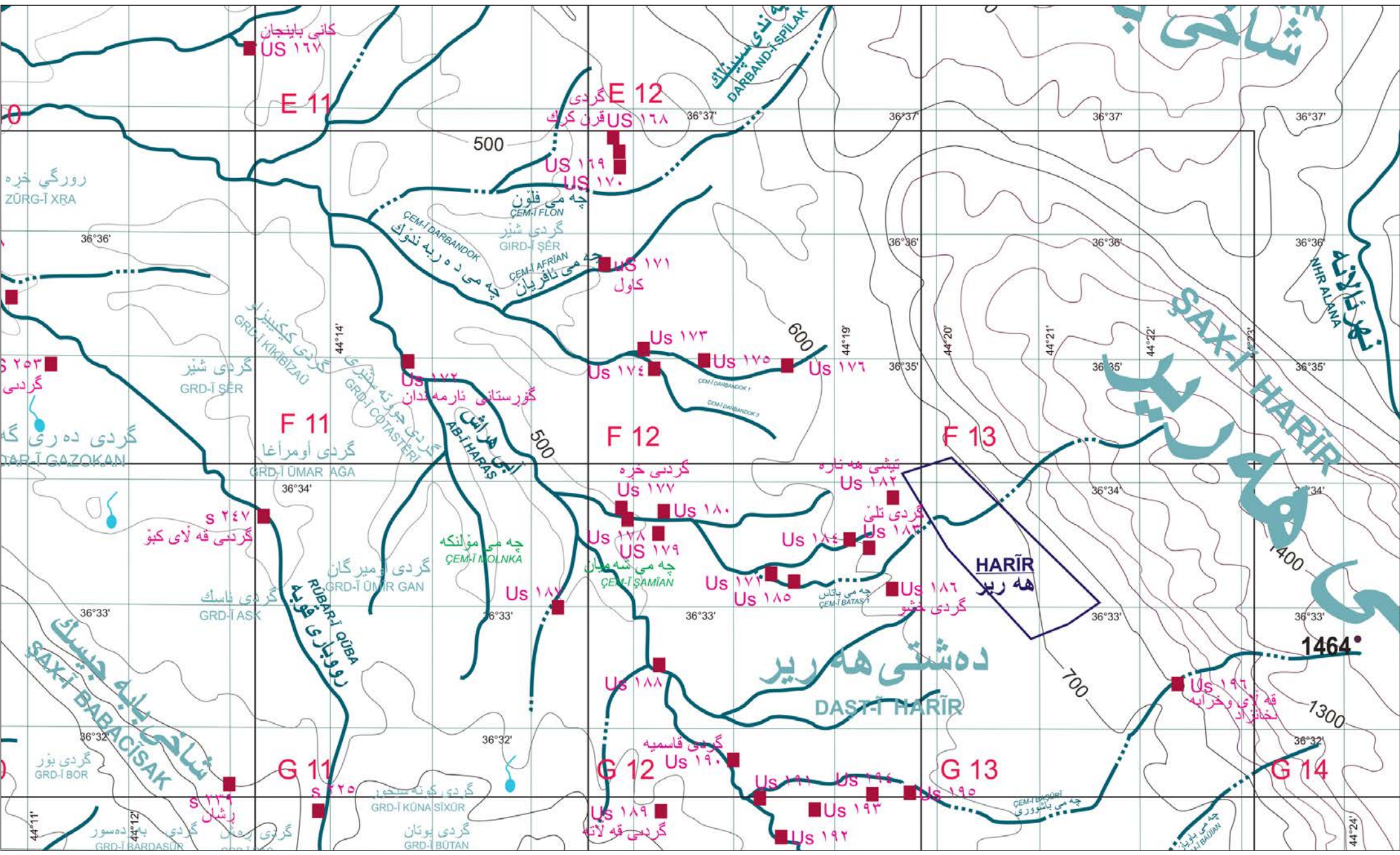
US 211. SEEN FROM THE WEST.

PHOTO BY XENIA KOLIŃSKA. 2016





REGION: HARĪR PLAIN (DAŠT-Ī HARĪR). NORTHERN PART.



کانی باینجان
US 127

رورگی خره
ZURG-I XRA

گردي شير
GRD-I SER

گردي ده ري گه
GRD-I GAZOKAN

گردي فاه لاي کبو
S 247

گردي فاسک
GRD-I ASK

گردي بوز
GRD-I BOR

گردي بارسور
GRD-I BARDASUR

گردي بوتان
GRD-I BUTAN

E 12
گردي
US 168
قرن کړک

US 169
US 170

چه مي فلون
CEM-I FLON

گردي شير
GIRD-I SER

چه مي تافريان
CEM-I AFRIAN

US 171
کول

US 172

US 173

US 174

US 175

US 176

US 177

F 12

گردي خره
US 178

US 179

US 180

US 181

US 182

US 183

تيشي هه ناره
US 184

گردي تلي
US 185

US 186

US 187

US 188

US 189

US 190

F 13

گردي فاسک
US 191

US 192

US 193

US 194

US 195

US 196

US 197

گردي فاه لاي
US 198

US 199

US 200

US 201

US 202

US 203

F 14

گردي فاه لاي
US 204

US 205

US 206

US 207

US 208

US 209

US 210

US 211

US 212

US 213

US 214

US 215

US 216

US 217

US 218

US 219

US 220

US 221

US 222

US 223

US 224

US 225

US 226

US 227

US 228

US 229

US 230

US 231

US 232

US 233

US 234

US 235

US 236

US 237

US 238

US 239

US 240

US 241

US 242

US 243

US 244

US 245

US 246

US 247

US 248

US 249

US 250

US 251

US 252

US 253

US 254

US 255

US 256

US 257

US 258

US 259

US 260

US 261

US 262

US 263

US 264

US 265

US 266

US 267

US 268

US 269

US 270

US 271

US 272

US 273

US 274

US 275

US 276

US 277

US 278

US 279

US 280

US 281

US 282

US 283

US 284

US 285

US 286

US 287

US 288

US 289

US 290

US 291

US 292

US 293

US 294

US 295

US 296

US 297

US 298

US 299

US 300

US 301

US 302

US 303

US 304

US 305

US 306

US 307

US 308

US 309

US 310

US 311

US 312

US 313

US 314

US 315

US 316

US 317

US 318

US 319

US 320

US 321

US 322

US 323

US 324

US 325

US 326

US 327

US 328

US 329

US 330

US 331

US 332

US 333

US 334

US 335

US 336

US 337

US 338

US 339

US 340

US 341

US 342

US 343

US 344

US 345

US 346

US 347

US 348

US 349

US 350

US 351

US 352

US 353

US 354

US 355

US 356

US 357

US 358

US 359

US 360

US 361

US 362

US 363

US 364

US 365

US 366

US 367

US 368

US 369

US 370

US 371

US 372

US 373

US 374

US 375

US 376

US 377

US 378

US 379

US 380

US 381

US 382

US 383

US 384

US 385

US 386

US 387

US 388

US 389

US 390

US 391

US 392

US 393

US 394

US 395

US 396

US 397

US 398

US 399

US 400

US 401

US 402

US 403

US 404

US 405

US 406

US 407

US 408

US 409

US 410

US 411

US 412

US 413

US 414

US 415

US 416

US 417

US 418

US 419

US 420

US 421

US 422

US 423

US 424

US 425

US 426

US 427

US 428

US 429

US 430

US 431

US 432

US 433

US 434

US 435

US 436

US 437

US 438

US 439

US 440

US 441

US 442

US 443

US 444



S 246/US 167

BING © DIGITALGLOBE © MICROSOFT CORPORATION © HERE

0 100 m



US 167. SEEN FROM SOUTH.

PHOTO BY XENIA KOLIŃSKA. 2016



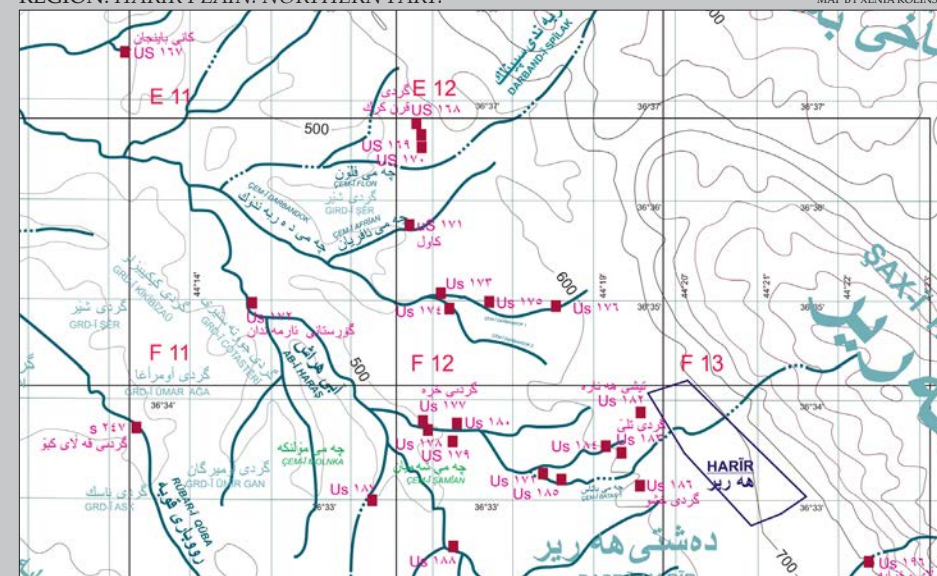
FIELD NUMBER	S 246
NUMBER ON THE MAP	US ۱۶۷
LOCAL NAME	KANĪ BAĪNCAN
POSITION DTM	36°37'29"N 44°13'13"E
AREA	2, 19 ha
TYPE OF SITE	FLAT SETTLEMENT
OBSERVATION CONDITIONS	GOOD/DIFFICULT/POOR
DAMAGES AND THREATS	AGRICULTURE
AREAS COLLECTED	A

PERIOD OF OCCUPATION

PAL	PPN	0	1	2	3	4	5	6	7	8	9	10	11	12	13	14	15	16	17	18	19	20	21

REGION: HARĪR PLAIN. NORTHERN PART.

MAP BY XENIA KOLIŃSKA





BING © DIGITALGLOBE © MICROSOFT CORPORATION © HERE

0 300 m



FIELD NUMBER	S 192
NUMBER ON THE MAP	US ١٦٨
LOCAL NAME	GRD-Ī QRN KRK/GRD-Ī FLON
POSITION DTM	36°36'46"N 44°16'48"E
AREA	8,04 ha
TYPE OF SITE	TELL WITH LOWER CITY
OBSERVATION CONDITIONS	GOOD
DAMAGES AND THREATS	AGRICULTURE/MILITARY TRENCHES/ POLES/ROADS/PIT/CEMETERY
AREAS COLLECTED	A B C D

PERIOD OF OCCUPATION

PAL	PPN	0	1	2	3	4	5	6	7	8	9	10	11	12	13	14	15	16	17	18	19	20	21

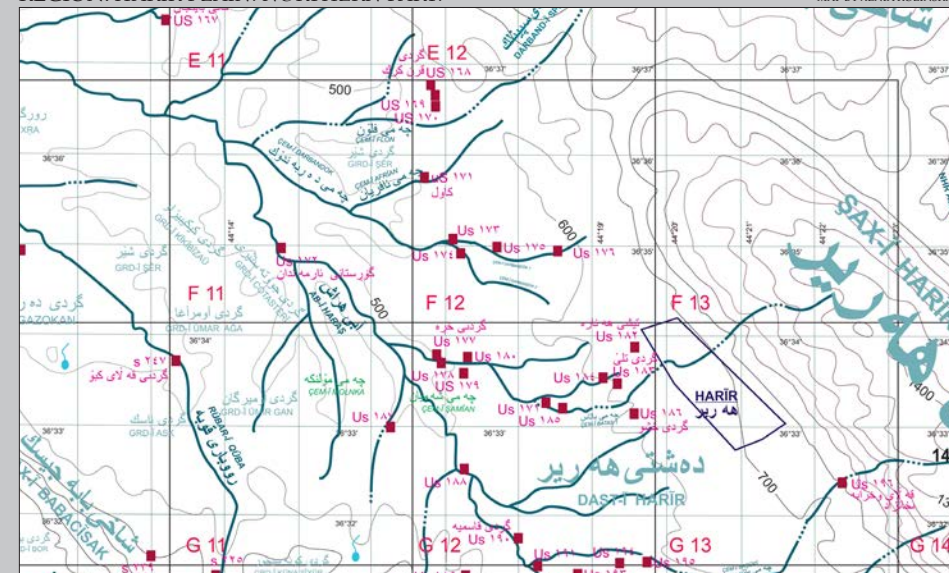
US 168. SEEN FROM EAST.

PHOTO BY DARIUSZ PIASECKI. 2016



REGION: HARĪR PLAIN. NORTHERN PART.

MAP BY XENIA KOLIŃSKA





BING © DIGITALGLOBE © MICROSOFT CORPORATION © HERE

0 100 m



FIELD NUMBER	S 194
NUMBER ON THE MAP	US ۱۷۰
LOCAL NAME	GRD-Ī FLON 2
POSITION DTM	36°36'29"N 44°16'51"E
AREA	1,55 ha
TYPE OF SITE	FLAT SETTLEMENT
OBSERVATION CONDITIONS	GOOD
DAMAGES AND THREATS	ROAD
AREAS COLLECTED	WHOLE SITE

PERIOD OF OCCUPATION																							
PAL	PPN	0	1	2	3	4	5	6	7	8	9	10	11	12	13	14	15	16	17	18	19	20	21

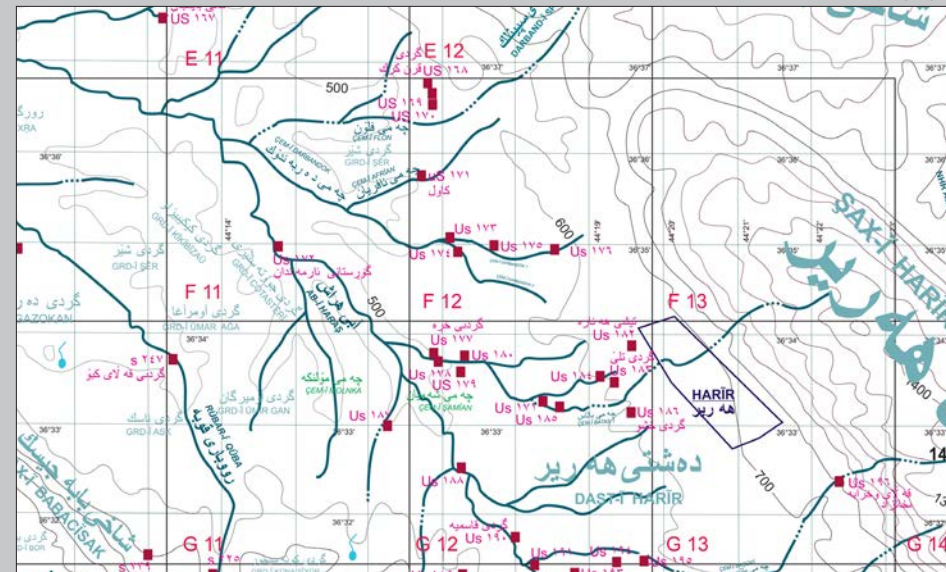
US 170. SEEN FROM SOUTH-WEST.

PHOTO BY KAROLINA DO HUU., 2016



REGION: HARĪR PLAIN, NORTHERN PART.

MAP BY XENIA KOLIŃSKA





BING © DIGITALGLOBE © MICROSOFT CORPORATION © HERE

0 100 m



FIELD NUMBER	S 245
NUMBER ON THE MAP	US 171
LOCAL NAME	KAÜL
POSITION DTM	36°35'42"N 44°16'42"E
AREA	2,84 ha
TYPE OF SITE	TELL
OBSERVATION CONDITIONS	DIFFICULT
DAMAGES AND THREATS	AGRICULTURE / CUTS
AREAS COLLECTED	A

TENTATIVE CHRONOLOGY

PAL	PPN	0	1	2	3	4	5	6	7	8	9	10	11	12	13	14	15	16	17	18	19	20	21

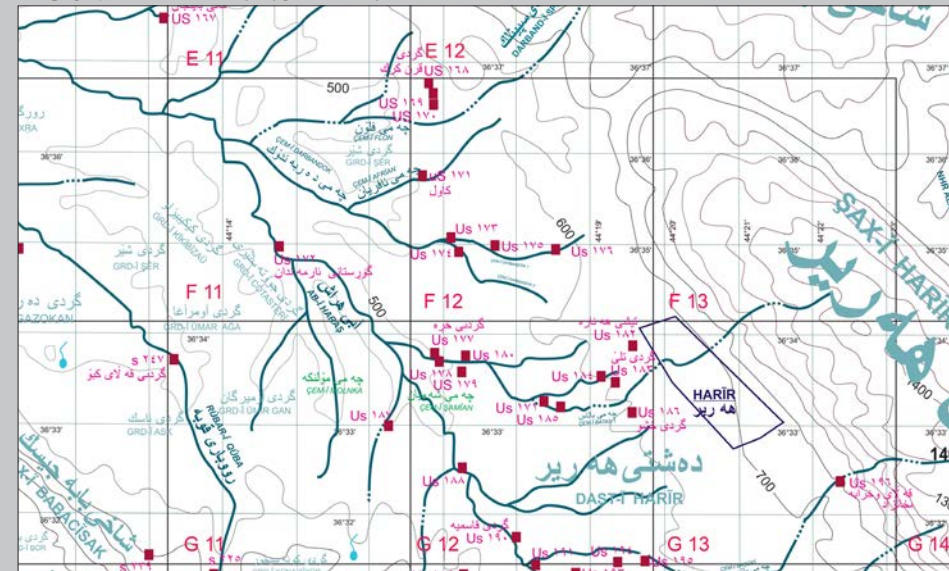
US 171. SEEN FROM SOUTH-WEST.

PHOTO BY XENIA KOLIŃSKA. 2016



REGION: HARİR PLAIN. NORTHERN PART.

MAP BY XENIA KOLIŃSKA





S 249 / US 172

BING © DIGITALGLOBE © MICROSOFT CORPORATION © HERE

0 100 m



FIELD NUMBER	S 249
NUMBER ON THE MAP	US ۱۷۲
LOCAL NAME	GORĒSTAN-Ī ARMANDAN
POSITION DTM	36°34'57"N 44°14'48"E
AREA	0,36 ha
TYPE OF SITE	TELL
OBSERVATION CONDITIONS	GOOD
DAMAGES AND THREATS	CEMETERY / ROAD / CUTS / PITS
AREAS COLLECTED	ALL SITE

TENTATIVE CHRONOLOGY

PAL	PPN	0	1	2	3	4	5	6	7	8	9	10	11	12	13	14	15	16	17	18	19	20	21

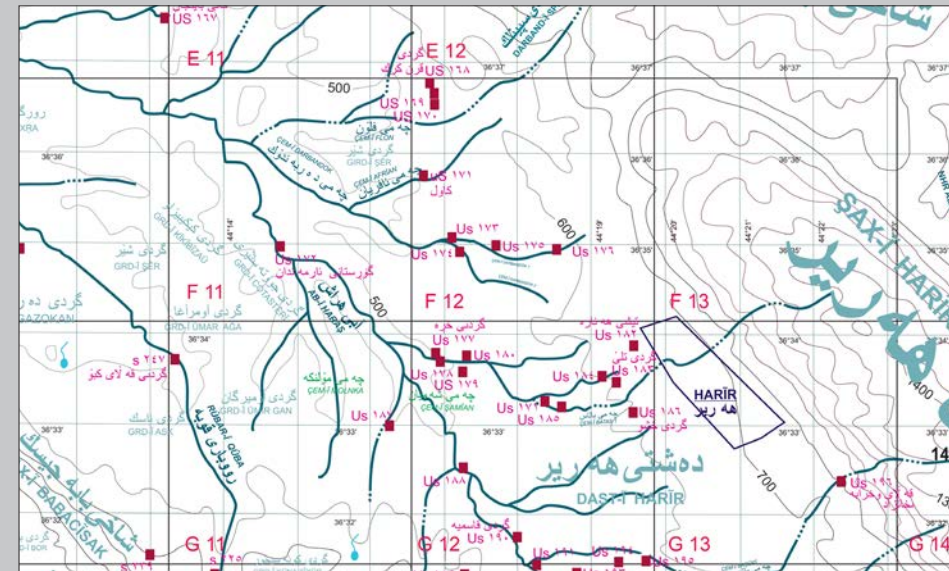
US 172. SEEN FROM SOUTH-EAST.

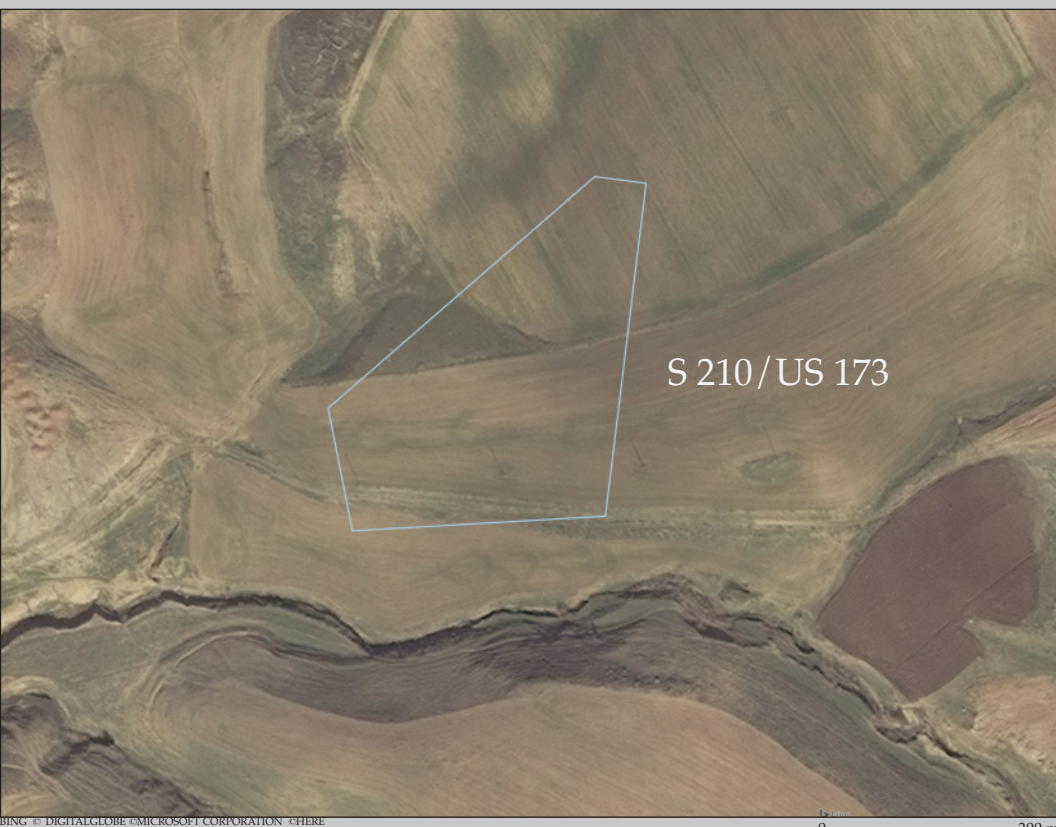
PHOTO BY XENIA KOLIŃSKA, 2016



REGION: HARĪR PLAIN, NORTHERN PART.

MAP BY XENIA KOLIŃSKA





BING © DIGITALGLOBE © MICROSOFT CORPORATION © HERE

0 300 m

FIELD NUMBER	S 210
NUMBER ON THE MAP	US ۱۷۳
LOCAL NAME	NO NAME
POSITION DTM	36°35'02"N 44°17'04"E
AREA	1 ha
TYPE OF SITE	FLAT SETTLEMENT
OBSERVATION CONDITIONS	GOOD
DAMAGES AND THREATS	AGRICULTURE
AREAS COLLECTED	A

PERIOD OF OCCUPATION																								
PAL	PPN	0	1	2	3	4	5	6	7	8	9	10	11	12	13	14	15	16	17	18	19	20	21	



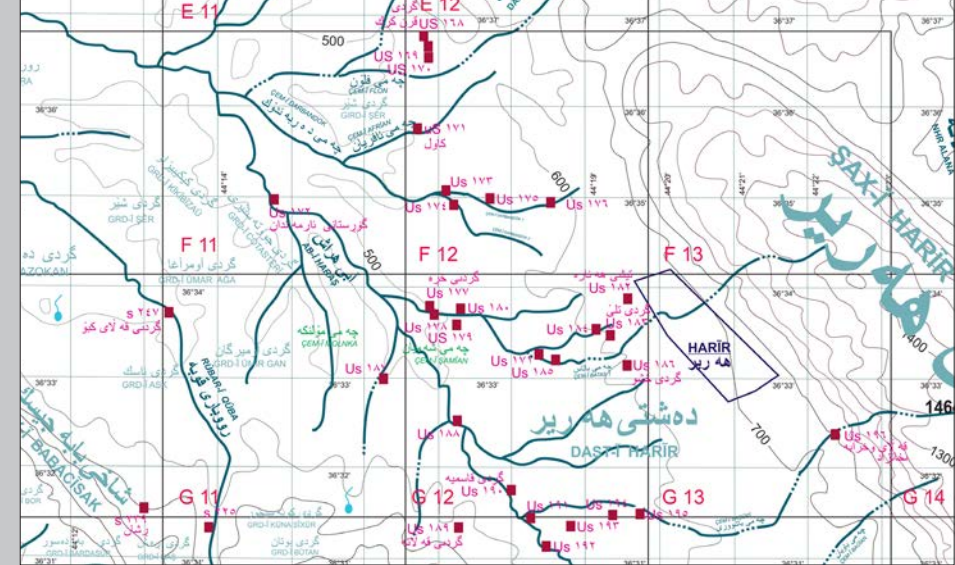
US 173. SEEN FROM NORTH-WEST.

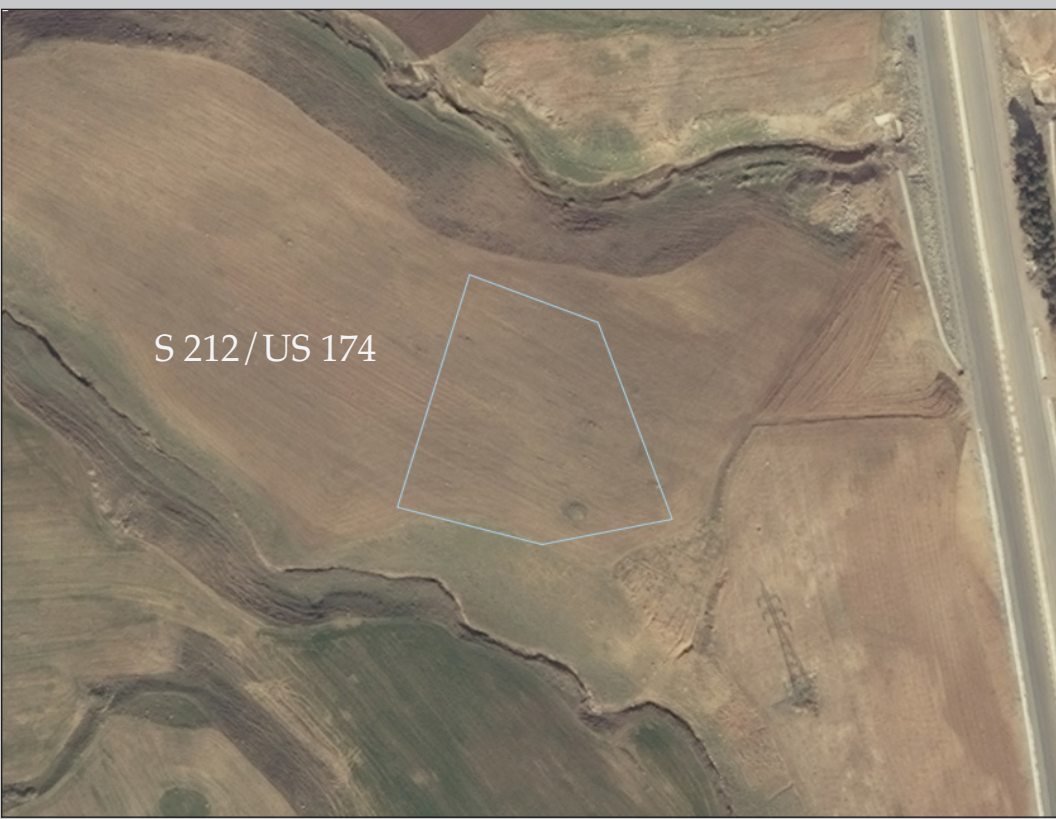
PHOTO BY DARIUSZ PIASECKI. 2016



REGION: HARĪR PLAIN, NORTHERN PART.

MAP BY XENIA KOLIŃSKA





BING © DIGITALGLOBE © MICROSOFT CORPORATION © HERE
0 100 m

US 174. SEEN FROM SOUTH.



PHOTO BY DARIUSZ PLASECKI, 2016

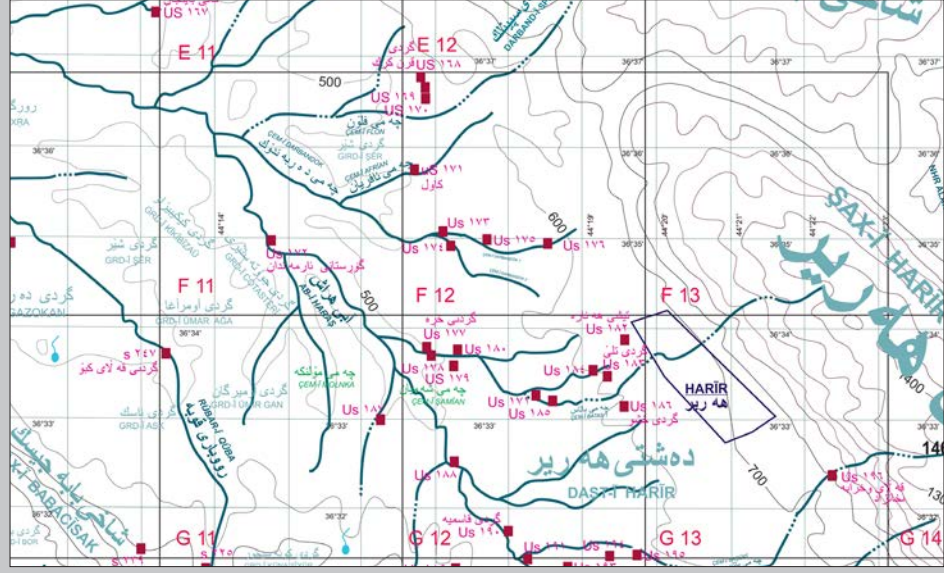
FIELD NUMBER	S 212
NUMBER ON THE MAP	US 1۷۴
LOCAL NAME	NO NAME
POSITION DTM	36°35'54"N 44°17'12"E
AREA	0,68 ha
TYPE OF SITE	FLAT SETTLEMENT
OBSERVATION CONDITIONS	GOOD
DAMAGES AND THREATS	AGRICULTURE
AREAS COLLECTED	WHOLE SITE

PERIOD OF OCCUPATION																							
PAL	PPN	0	1	2	3	4	5	6	7	8	9	10	11	12	13	14	15	16	17	18	19	20	21



REGION: HARIR PLAIN, NORTHERN PART.

MAP BY XENIA KOLINSKA





FIELD NUMBER	S 203
NUMBER ON THE MAP	US ۱۷۵
LOCAL NAME	NO NAME
POSITION DTM	36°34'59"N 44°17'42"E
AREA	0,35 ha
TYPE OF SITE	FLAT SETTLEMENT
OBSERVATION CONDITIONS	GOOD
DAMAGES AND THREATS	AGRICULTURE / CANALS / ROADS
AREAS COLLECTED	WHOLE SITE

PERIOD OF OCCUPATION																							
PAL	PPN	0	1	2	3	4	5	6	7	8	9	10	11	12	13	14	15	16	17	18	19	20	21

BING © DIGITALGLOBE © MICROSOFT CORPORATION © HERE © 2016 DigitalGlobe © 2016 GeoEye © 2016 Microsoft Corporation 0 100 m

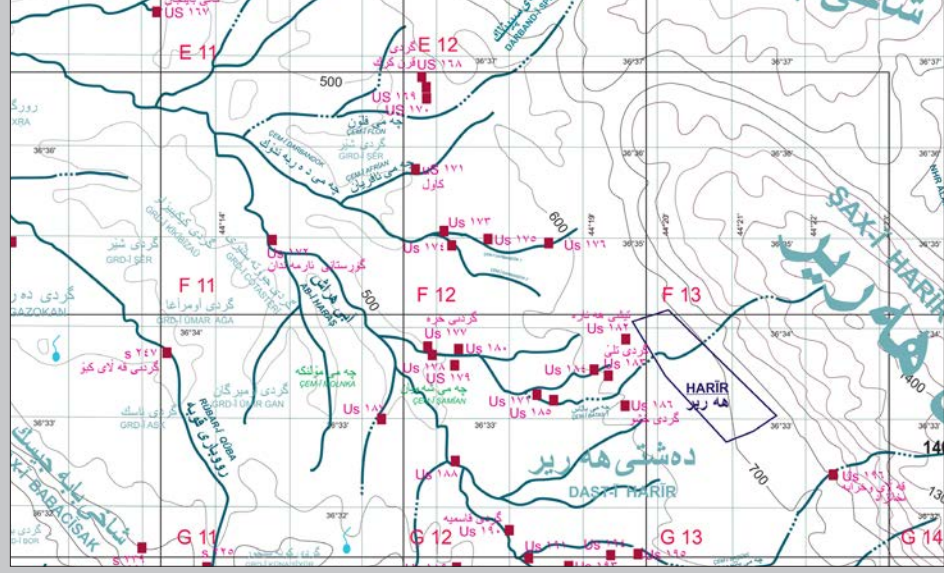
US 175. SEEN FROM SOUTH.

PHOTO BY KAROLINA DO HUU, 2016



REGION: HARĪR PLAIN, NORTHERN PART.

MAP BY XENIA KOLIŃSKA





BING © DIGITALGLOBE © MICROSOFT CORPORATION © HERE

0 100 m



FIELD NUMBER	S 204
NUMBER ON THE MAP	US ۱۷۶
LOCAL NAME	NO NAME
POSITION DTM	36°34'54"N 44°18'33"E
AREA	0,13 ha
TYPE OF SITE	FLAT SETTLEMENT
OBSERVATION CONDITIONS	DIFFICULT
DAMAGES AND THREATS	AGRICULTURE/HOUSES
AREAS COLLECTED	A

TENTATIVE CHRONOLOGY

PAL	PPN	0	1	2	3	4	5	6	7	8	9	10	11	12	13	14	15	16	17	18	19	20	21

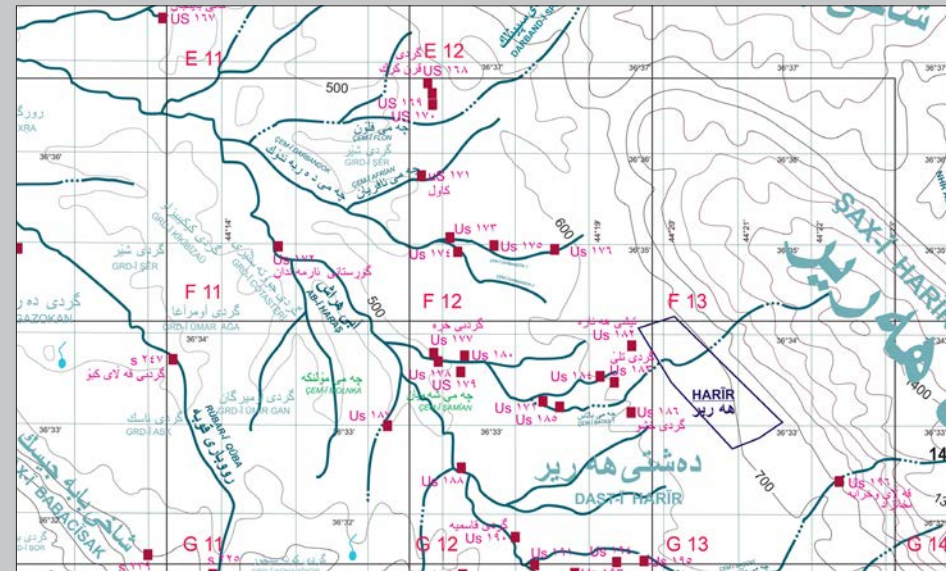
US 176. SEEN FROM WEST.

PHOTO BY KAROLINA DO HUU, 2016



REGION: HARİR PLAIN, NORTHERN PART.

MAP BY XENIA KOLINSKA





BING © DIGITALGLOBE © MICROSOFT CORPORATION © HERE

0 100 m



FIELD NUMBER	S 229		
NUMBER ON THE MAP	US ۱۷۷		
LOCAL NAME	GIRD-Ī XRA		
POSITION DTM	36°33'41"N 44°16'58"E		
AREA	1,2 ha		
TYPE OF SITE	TELL WITH LOWER CITY		
OBSERVATION CONDITIONS	DIFFICULT		
DAMAGES AND THREATS	HOUSES / AGRICULTURE / CANAL		
AREAS COLLECTED	A	B	

TENTATIVE CHRONOLOGY

PAL	PPN	0	1	2	3	4	5	6	7	8	9	10	11	12	13	14	15	16	17	18	19	20	21	

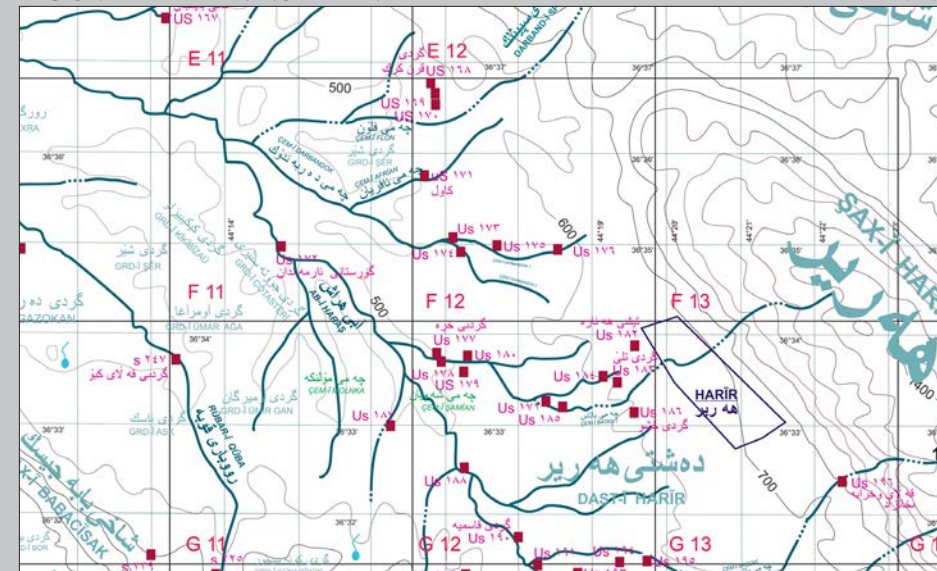
US 177. SEEN FROM NORTH-WEST.

PHOTO BY DARIUSZ PLASECKI, 2016



REGION: HARĪR PLAIN, NORTHERN PART.

MAP BY XENIA KOLIŃSKA





BING © DIGITALGLOBE © MICROSOFT CORPORATION © HERE

0 100 m



FIELD NUMBER	S 237
NUMBER ON THE MAP	US ۱۷۸
LOCAL NAME	NO NAME
POSITION DTM	36°33'38"N 44°16'56"E
AREA	1,08 ha
TYPE OF SITE	FLAT SETTLEMENT
OBSERVATION CONDITIONS	GOOD
DAMAGES AND THREATS	AGRICULTURE
AREAS COLLECTED	A

PERIOD OF OCCUPATION																							
PAL	PPN	0	1	2	3	4	5	6	7	8	9	10	11	12	13	14	15	16	17	18	19	20	21

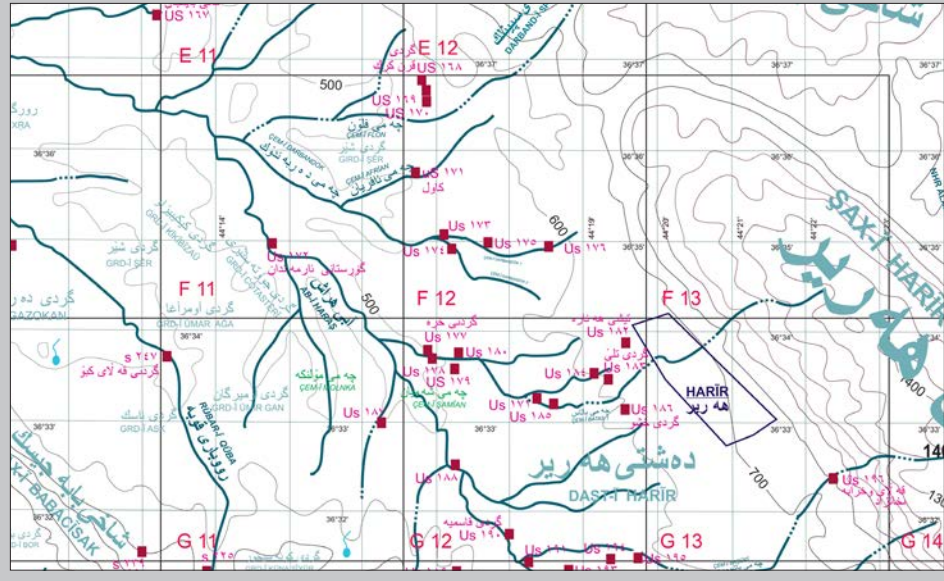
US 178. SEEN FROM WEST.

PHOTO BY KAROLINA DO HUU, 2016



REGION: HARĪR PLAIN. NORTHERN PART.

MAP BY XENIA KOLIŇSKA





BING © DIGITALGLOBE © MICROSOFT CORPORATION © HERE
 0 100 m

US 179. SEEN FROM SOUTH-WEST.



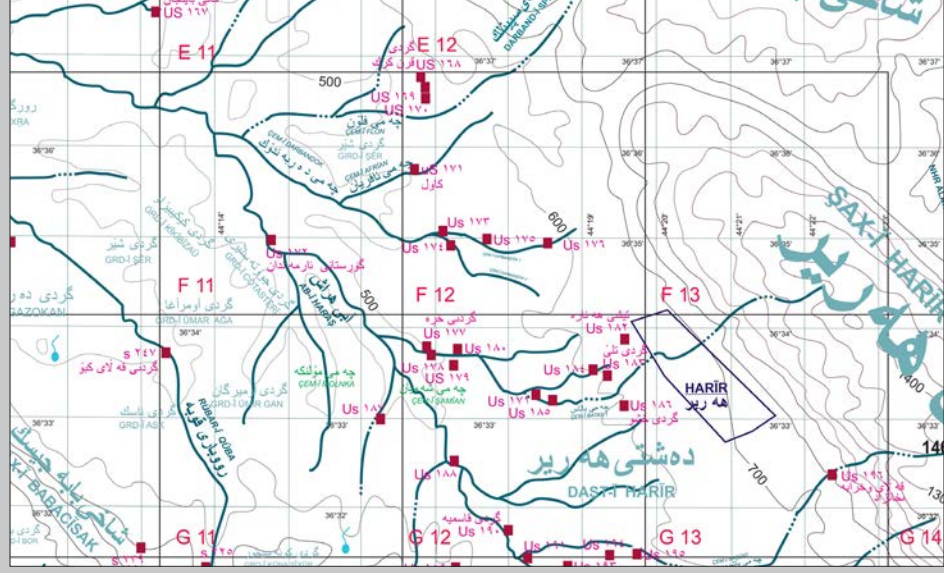
PHOTO BY KAROLINA DO HUU, 2016

FIELD NUMBER	S 236
NUMBER ON THE MAP	US 179
LOCAL NAME	NO NAME
POSITION DTM	36°33'34"N 44°17'13"E
AREA	1,32 ha
TYPE OF SITE	FLAT SETTLEMENT
OBSERVATION CONDITIONS	POOR
DAMAGES AND THREATS	AGRICULTURE / ROADS / PITS / CUTS
AREAS COLLECTED	A

PERIOD OF OCCUPATION																								
PAL	PPN	0	1	2	3	4	5	6	7	8	9	10	11	12	13	14	15	16	17	18	19	20	21	



REGION: HARİR PLAIN, NORTHERN PART, VICINITY OF HARİR. MAP BY XENIA KOLINSKA





BING © DIGITALGLOBE © MICROSOFT CORPORATION © HERE
 0 100 m

US 180. SEEN FROM NORTH.



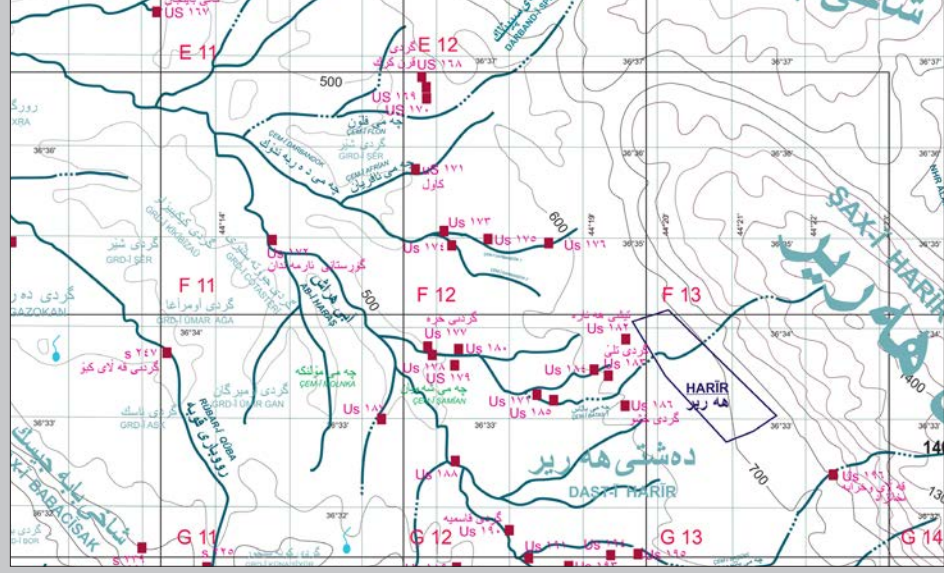
PHOTO BY DARIUSZ PIASECKI, 2016

FIELD NUMBER	S 227
NUMBER ON THE MAP	US ۱۸۰
LOCAL NAME	NO NAME
POSITION DTM	36°33'46"N 44°17'18"E
AREA	0,95 ha
TYPE OF SITE	FLAT SETTLEMENT
OBSERVATION CONDITIONS	GOOD
DAMAGES AND THREATS	AGRICULTURE / ROADS
AREAS COLLECTED	WHOLE SITE

PERIOD OF OCCUPATION																							
PAL	PPN	0	1	2	3	4	5	6	7	8	9	10	11	12	13	14	15	16	17	18	19	20	21



REGION: HARĪR PLAIN, NORTHERN PART, VICINITY OF HARĪR. MAP BY XENIA KOLINSKA





BING © DIGITALGLOBE © MICROSOFT CORPORATION © HERE

0 100 m



US 181. SEEN FROM NORTH-WEST.

PHOTO BY KAROLINA DO HUU, 2016



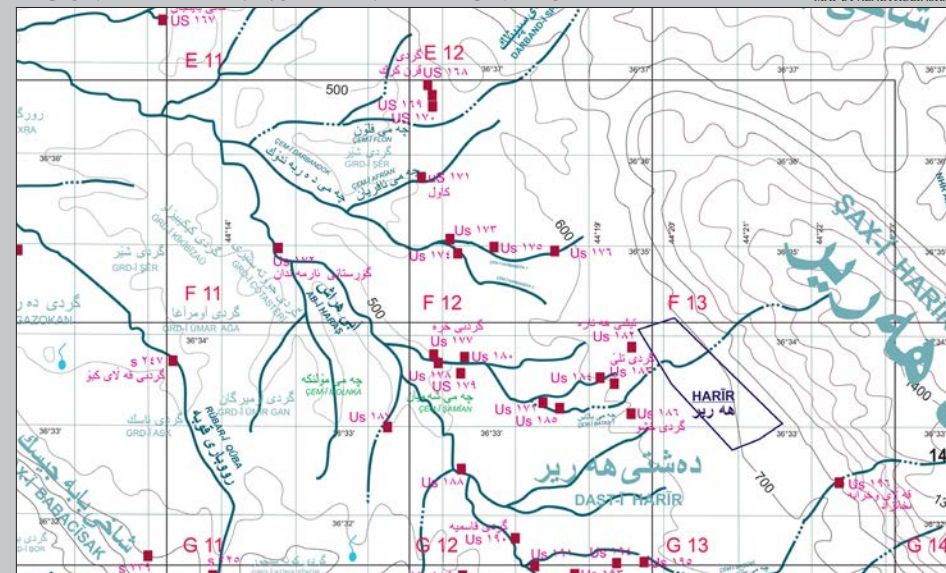
FIELD NUMBER	S 213
NUMBER ON THE MAP	US ۱۸۱
LOCAL NAME	NO NAME
POSITION DTM	36°33'16"N 44°18'23"E
AREA	1,97 ha
TYPE OF SITE	FLAT SETTLEMENT
OBSERVATION CONDITIONS	GOOD
DAMAGES AND THREATS	AGRICULTURE/ROADS/CUT/CANALS POLES/BUILDING ACTIVITIES
AREAS COLLECTED	WHOLE SITE

PERIOD OF OCCUPATION

PAL	PPN	0	1	2	3	4	5	6	7	8	9	10	11	12	13	14	15	16	17	18	19	20	21

REGION: HARĪR PLAIN, NORTHERN PART. VICINITY OF HARĪR.

MAP BY XENIA KOLINSKA





S 188/US 182

BING © DIGITALGLOBE © MICROSOFT CORPORATION © HERE

0 100 m



FIELD NUMBER	S 188
NUMBER ON THE MAP	US ۱۸۲
LOCAL NAME	TİŞ-İ HANARA
POSITION DTM	36°33'51"N 44°19'33"E
AREA	1,22 ha
TYPE OF SITE	FLAT SETTLEMENT
OBSERVATION CONDITIONS	GOOD
DAMAGES AND THREATS	AGRICULTURE / ORCHARD / HOUSES
AREAS COLLECTED	WHOLE SITE

PERIOD OF OCCUPATION																							
PAL	PPN	0	1	2	3	4	5	6	7	8	9	10	11	12	13	14	15	16	17	18	19	20	21

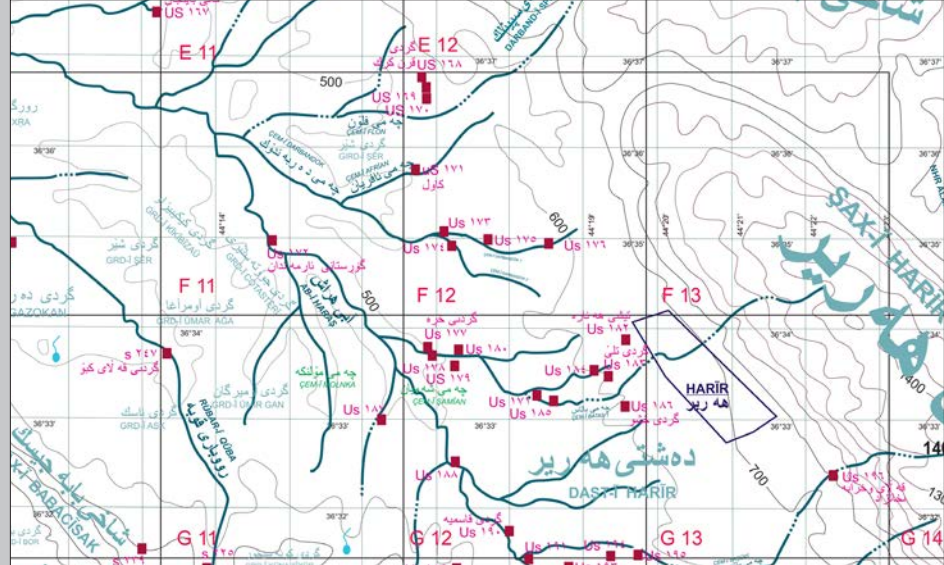
US 182. SEEN FROM SOUTH.

PHOTO BY KAROLINA DO HUU, 2016



REGION: HARİR PLAIN, NORTHERN PART, VICINITY OF HARİR.

MAP BY XENIA KOLINSKA





S 185/US 183

BING © DIGITALGLOBE © MICROSOFT CORPORATION © HERE

0 100 m



FIELD NUMBER	S 185
NUMBER ON THE MAP	US ۱۸۳
LOCAL NAME	GRD-Ī TL-Ê
POSITION DTM	36°33'27"N 44°19'20"E
AREA	30 ha
TYPE OF SITE	TELL WITH LOWER CITY
OBSERVATION CONDITIONS	DIFFICULT
DAMAGES AND THREATS	AGRICULTURE/CEMETERY/PITS CUTS/CANALS
AREAS COLLECTED	A B C D E F

PERIOD OF OCCUPATION																							
PAL	PPN	0	1	2	3	4	5	6	7	8	9	10	11	12	13	14	15	16	17	18	19	20	21

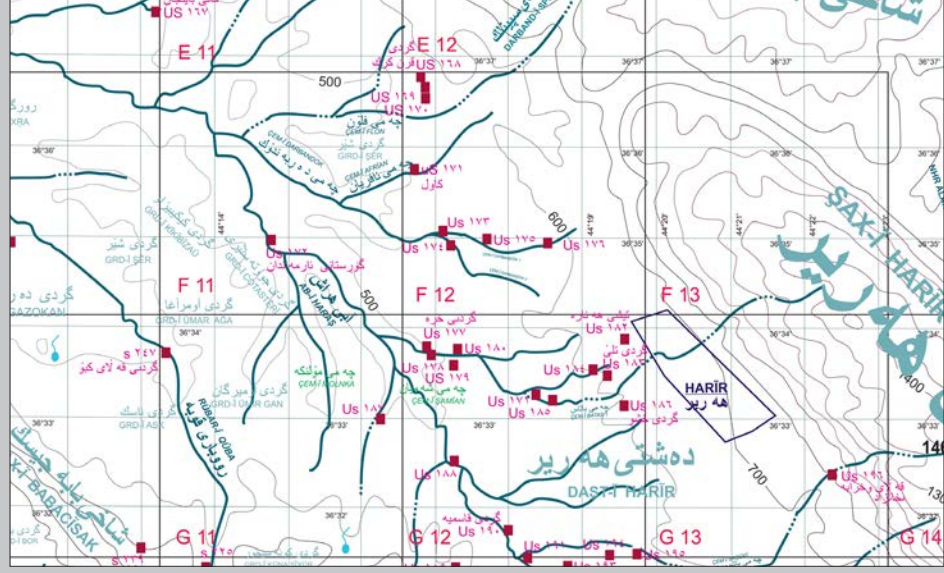
US 183. SEEN FROM NORTH.

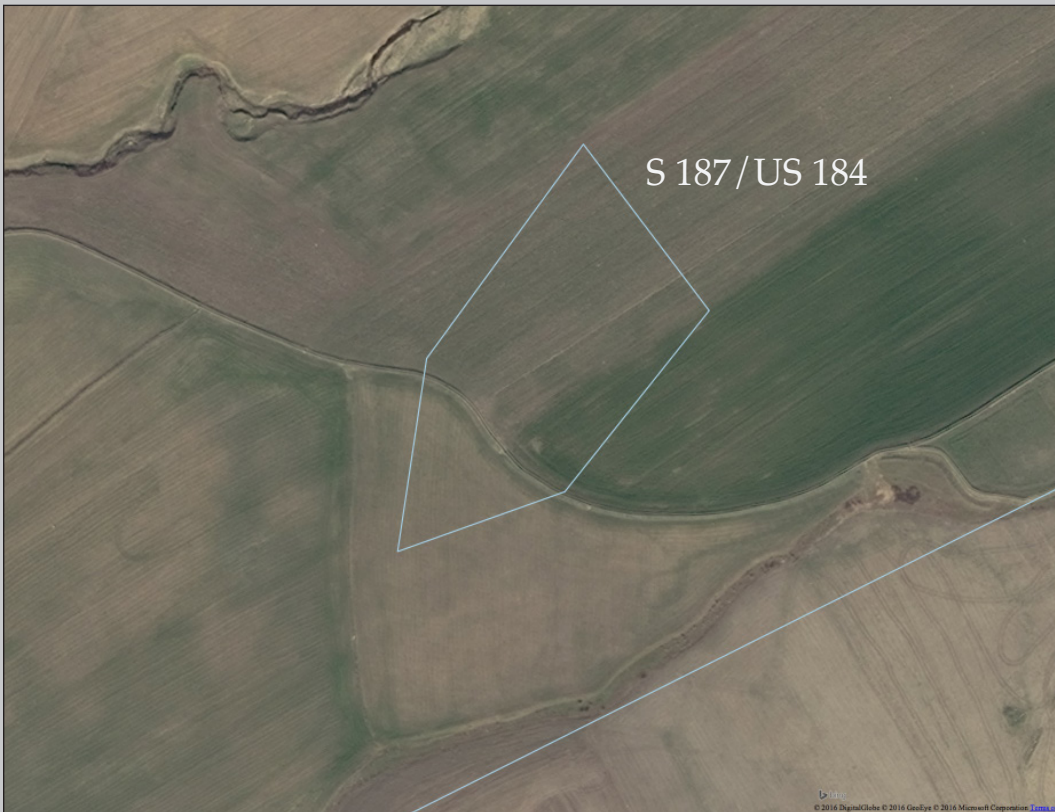
PHOTO BY DARIUSZ PIASECKI. 2016



REGION: HARĪR PLAIN, NORTHERN PART, VICINITY OF HARĪR.

MAP BY XENIA KOLINSKA





S 187/US 184

BING © DIGITALGLOBE © MICROSOFT CORPORATION © HERE © 2016 DigitalGlobe © 2016 GeoEye © 2016 Microsoft Corporation

0 100 m



FIELD NUMBER	S 187
NUMBER ON THE MAP	US ۱۸۴
LOCAL NAME	GRD-Í TL-Ê 2
POSITION DTM	36°33'32"N 44°19'09"E
AREA	1,1 ha
TYPE OF SITE	FLAT SETTLEMENT
OBSERVATION CONDITIONS	GOOD
DAMAGES AND THREATS	AGRICULTURE / CANALS
AREAS COLLECTED	WHOLE SITE

PERIOD OF OCCUPATION

PAL	PPN	0	1	2	3	4	5	6	7	8	9	10	11	12	13	14	15	16	17	18	19	20	21

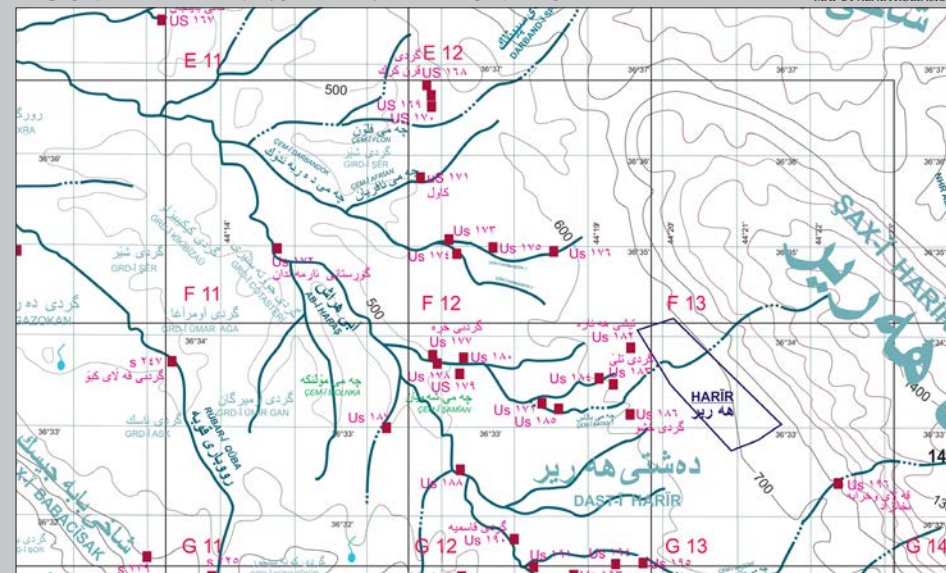
US 185. SEEN FROM NORTH-EAST.

PHOTO BY DARIUSZ PIASECKI. 2016



REGION: HARÏR PLAIN. NORTHERN PART. VICINITY OF HARÏR.

MAP BY XENIA KOLINSKA





BING © DIGITALGLOBE © MICROSOFT CORPORATION © HERE

0 100 m



US 186. SEEN FROM NORTH-WEST.

PHOTO BY KAROLINA DO HUU, 2016

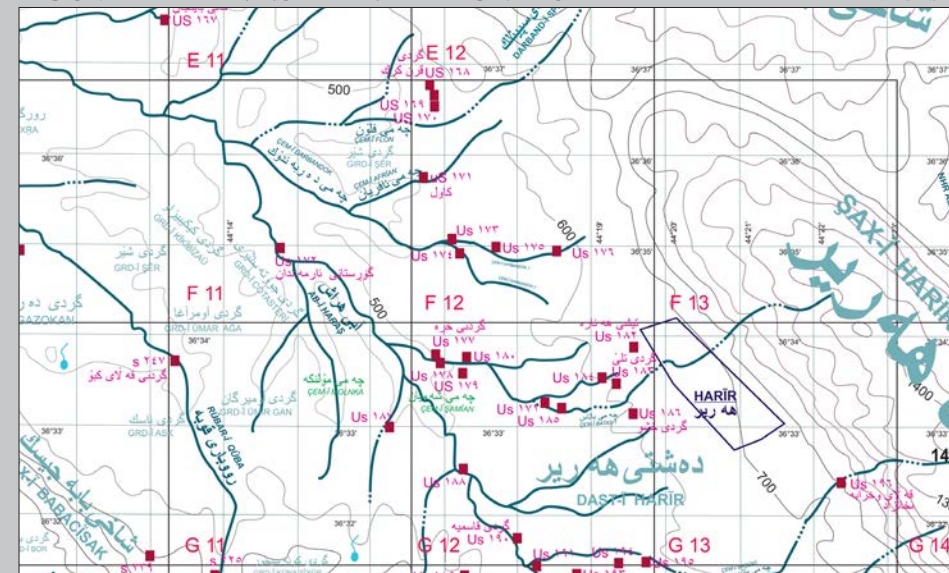


FIELD NUMBER	S 186
NUMBER ON THE MAP	US ۱۸۰
LOCAL NAME	NO NAME
POSITION DTM	36°33'11"N 44°18'36"E
AREA	1,66 ha
TYPE OF SITE	FLAT SETTLEMENT
OBSERVATION CONDITIONS	GOOD
DAMAGES AND THREATS	AGRICULTURE
AREAS COLLECTED	WHOLE SITE

PERIOD OF OCCUPATION																							
PAL	PPN	0	1	2	3	4	5	6	7	8	9	10	11	12	13	14	15	16	17	18	19	20	21

REGION: HARĪR PLAIN, NORTHERN PART. VICINITY OF HARĪR.

MAP BY XENIA KOLINSKA





BING © DIGITALGLOBE © MICROSOFT CORPORATION © HERE

0 100 m



US 186. SEEN FROM NORTH-WEST.

PHOTO BY KAROLINA DO HUU, 2016



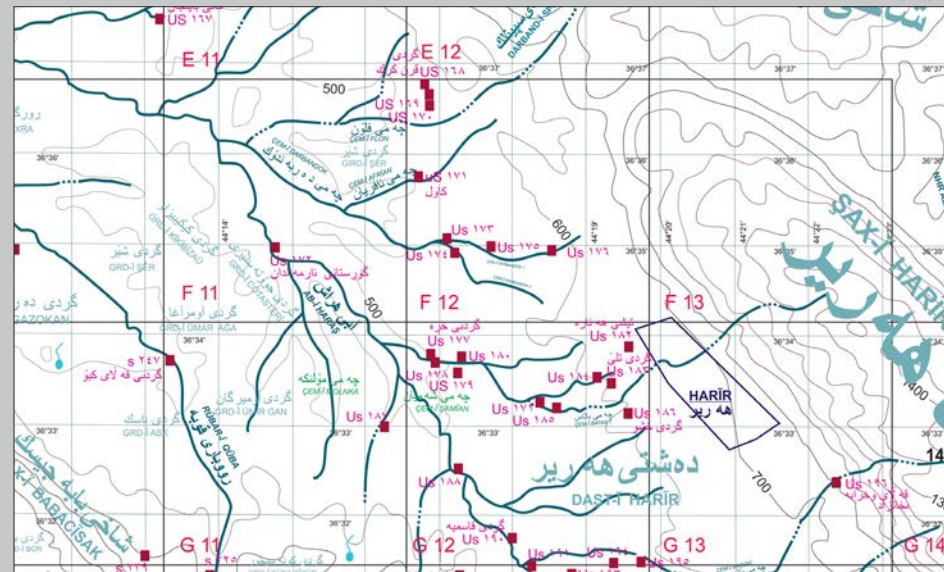
FIELD NUMBER	S 191						
NUMBER ON THE MAP	US ۱۸۶						
LOCAL NAME	GRD-Ī XAŞŪ						
POSITION DTM	36°33'10"N 44°19'44"E						
AREA	1,05 ha						
TYPE OF SITE	TELL						
OBSERVATION CONDITIONS	GOOD/DIFFICULT						
DAMAGES AND THREATS	AGRICULTURE						
AREAS COLLECTED	A	B					

PERIOD OF OCCUPATION

PAL	PPN	0	1	2	3	4	5	6	7	8	9	10	11	12	13	14	15	16	17	18	19	20	21

REGION: HARĪR PLAIN, NORTHERN PART. VICINITY OF HARĪR.

MAP BY XENIA KOLINŠKA





S 238 / US 187

BING © DIGITALGLOBE © MICROSOFT CORPORATION © HERE

0 100 m



FIELD NUMBER	S 238
NUMBER ON THE MAP	US ۱۸۷
LOCAL NAME	NO NAME
POSITION DTM	36°32'58"N 44°16'17"E
AREA	2,3 ha
TYPE OF SITE	FLAT SETTLEMENT
OBSERVATION CONDITIONS	GOOD/DIFFICULT
DAMAGES AND THREATS	AGRICULTURE/ROADS
AREAS COLLECTED	WHOLE SITE

PERIOD OF OCCUPATION

PAL	PPN	0	1	2	3	4	5	6	7	8	9	10	11	12	13	14	15	16	17	18	19	20	21	

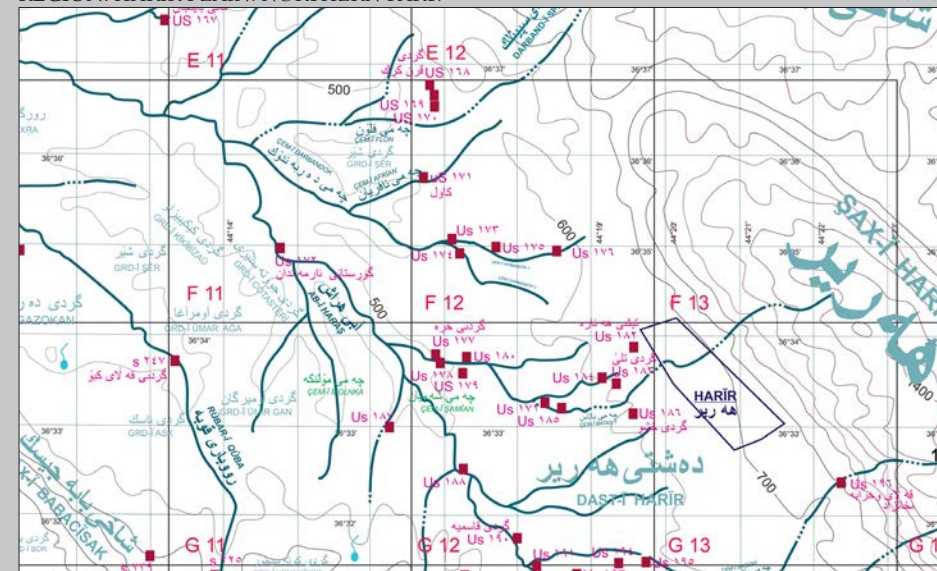
US 187. SEEN FROM SOUTH-WEST.

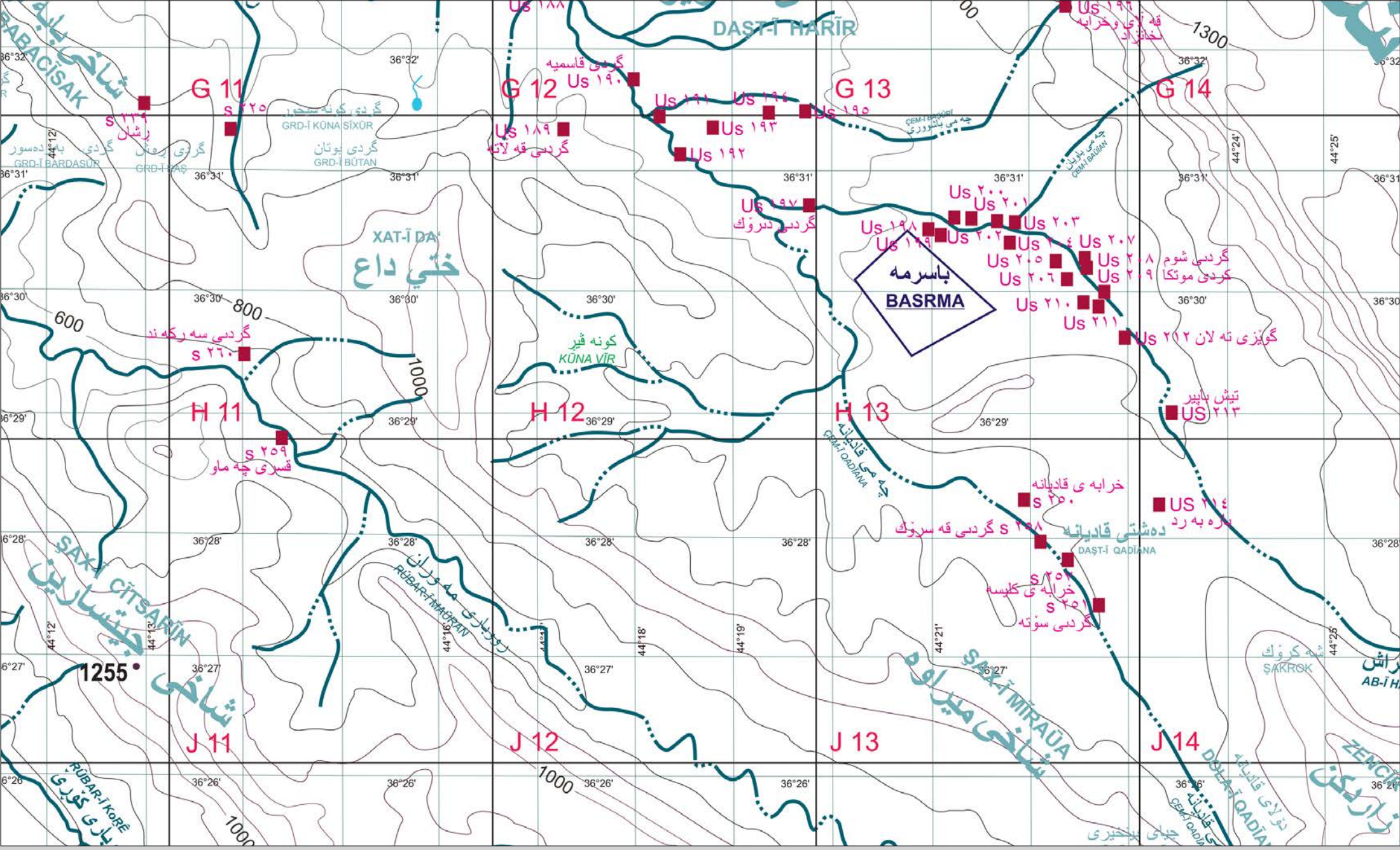
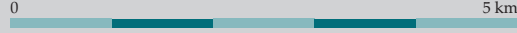
PHOTO BY DARIUSZ PLASECKI. 2016



REGION: HARİR PLAIN. NORTHERN PART.

MAP BY XENIA KOLINSKA







S 234/US 188

BING © DIGITALGLOBE © MICROSOFT CORPORATION © HERE

0 100 m



US 188. SEEN FROM SOUTH-WEST.

PHOTO BY JOANNA MARDAS. 2016

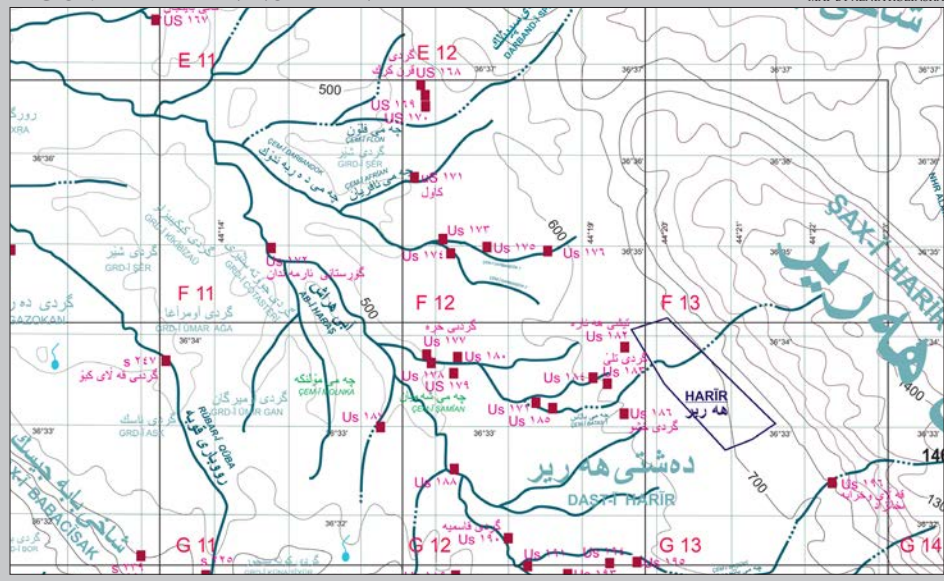


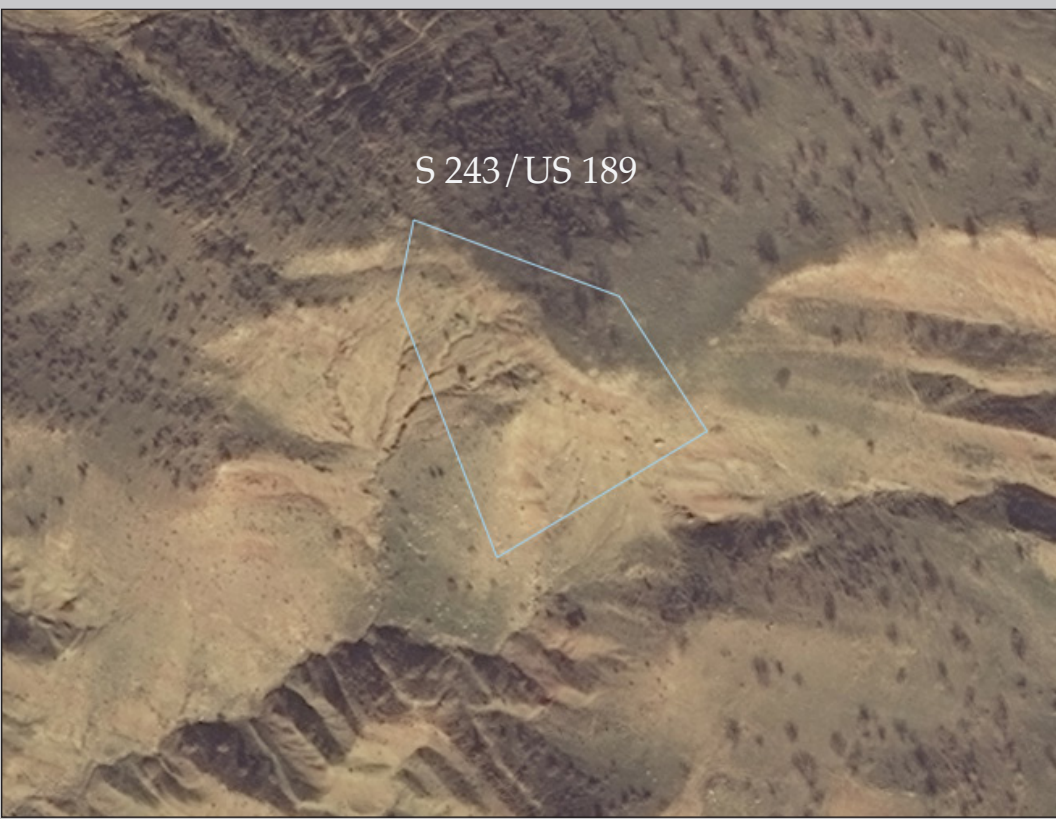
FIELD NUMBER	S 234
NUMBER ON THE MAP	US ۱۸۸
LOCAL NAME	NO NAME
POSITION DTM	36°32'29"N 44°17'14"E
AREA	0,18 ha
TYPE OF SITE	TELL
OBSERVATION CONDITIONS	DIFFICULT
DAMAGES AND THREATS	CUTS/POLES/ROADS/BUILDING ACTIVITIES
AREAS COLLECTED	WHOLE SITE

PERIOD OF OCCUPATION																							
PAL	PPN	0	1	2	3	4	5	6	7	8	9	10	11	12	13	14	15	16	17	18	19	20	21

REGION: HARĪR PLAIN. NORTHERN PART.

MAP BY XENIA KOLINSKA





BING © DIGITALGLOBE © MICROSOFT CORPORATION © HERE

0 100 m

US 189. SEEN FROM SOUTH-WEST.

PHOTO BY XENIA KOLIŃSKA. 2016

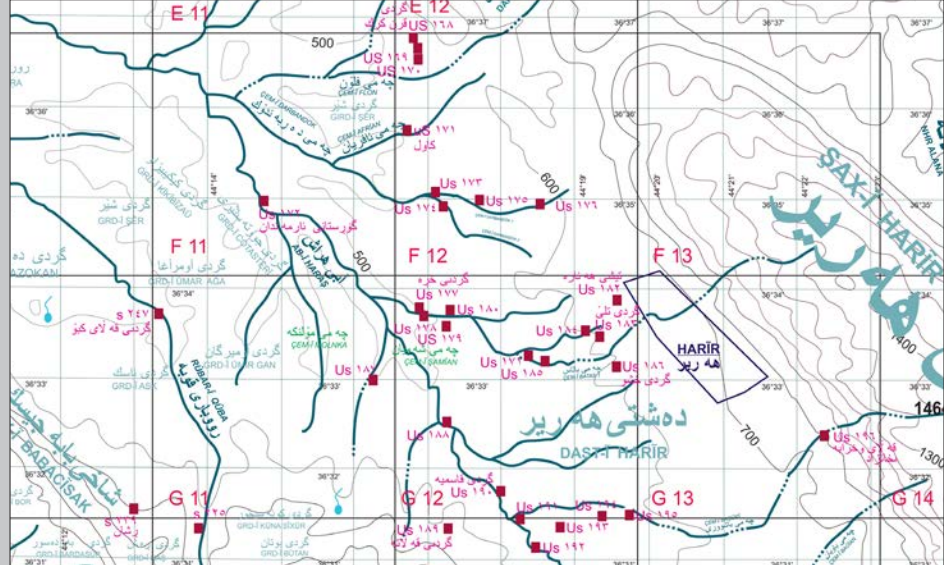


FIELD NUMBER	S 243
NUMBER ON THE MAP	US ۱۸۹
LOCAL NAME	GRD-Ī QAĻATA
POSITION DTM	36°32'29"N 44°17'14"E
AREA	0,5 ha
TYPE OF SITE	TELL
OBSERVATION CONDITIONS	DIFFICULT
DAMAGES AND THREATS	EROSION
AREAS COLLECTED	WHOLE SITE

PERIOD OF OCCUPATION																							
PAL	PPN	0	1	2	3	4	5	6	7	8	9	10	11	12	13	14	15	16	17	18	19	20	21



REGION: HARĪR PLAIN, NORTHERN PART. MAP BY XENIA KOLIŃSKA





S 190/US 190

BING © DIGITALGLOBE © MICROSOFT CORPORATION © HERE

0 100 m



FIELD NUMBER	S 190				
NUMBER ON THE MAP	US ۱۹۰				
LOCAL NAME	GRD-Ī QASMĪA				
POSITION DTM	36°31'44"N 44°17'59"E				
AREA	0,52 ha				
TYPE OF SITE	TELL				
OBSERVATION CONDITIONS	POOR				
DAMAGES AND THREATS	HOUSES/CANALS/CUTS/GARDEN				
AREAS COLLECTED	A	B			

PERIOD OF OCCUPATION

PAL	PPN	0	1	2	3	4	5	6	7	8	9	10	11	12	13	14	15	16	17	18	19	20	21

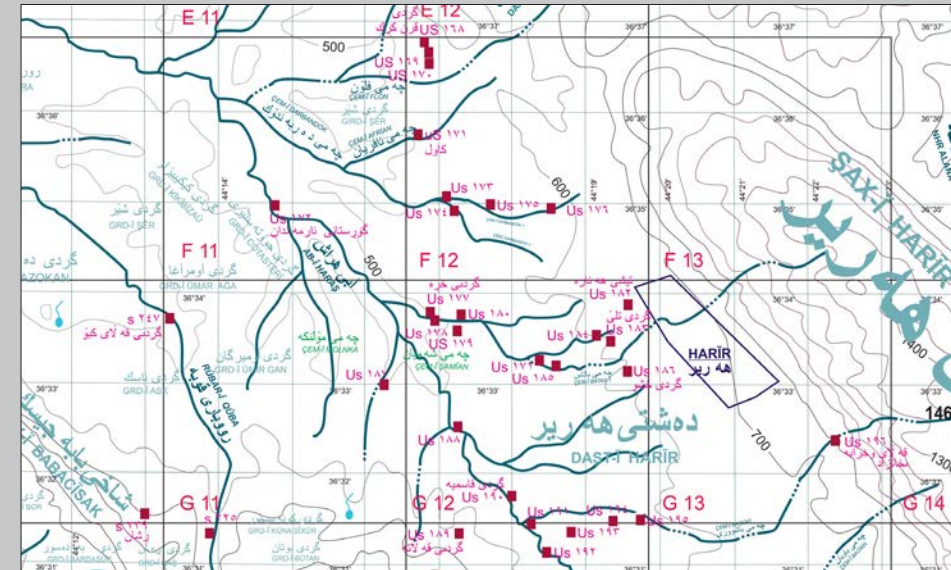
US 190. SEEN FROM NORTH-WEST.

PHOTO BY KAROLINA DO HUU, 2016



REGION: HARĪR PLAIN, NORTHERN PART.

MAP BY XENIA KOLINSKA





BING © DIGITALGLOBE © MICROSOFT CORPORATION © HERE
 0 100 m

US 191. SEEN FROM NORTH-WEST.



PHOTO BY DARIUSZ PLASECKI. 2016

FIELD NUMBER	S 242			
NUMBER ON THE MAP	US ۱۹۱			
LOCAL NAME	BAŞÛRÎ XÛARÛ 3			
POSITION DTM	36°31'27"N 44°18'15"E			
AREA	3,11 ha			
TYPE OF SITE	FLAT SETTLEMENT			
OBSERVATION CONDITIONS	GOOD/DIFFICULT			
DAMAGES AND THREATS	AGRICULTURE			
AREAS COLLECTED	A	B	C	

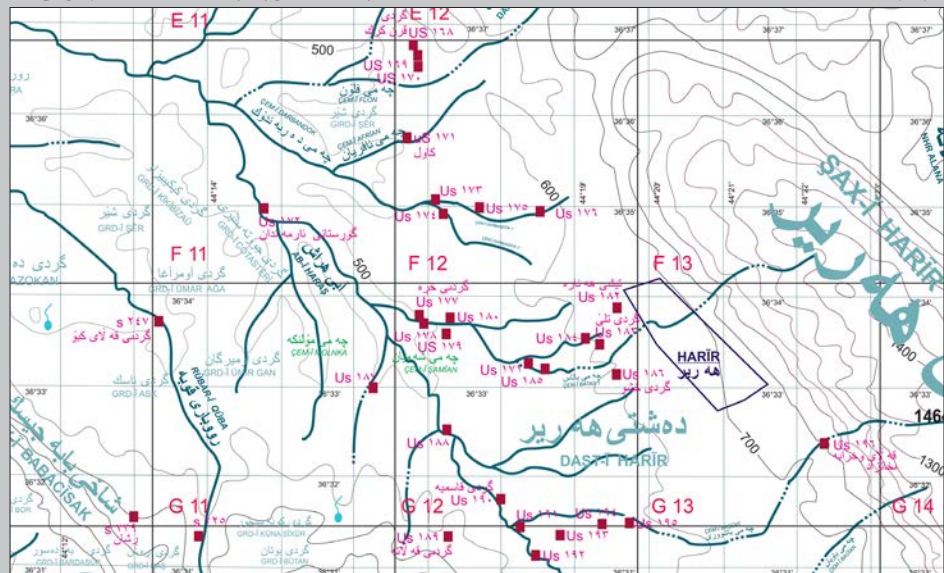
TENTATIVE CHRONOLOGY

PAL	PPN	0	1	2	3	4	5	6	7	8	9	10	11	12	13	14	15	16	17	18	19	20	21



REGION: HARÏR PLAIN. NORTHERN PART.

MAP BY XENIA KOLINSKA





BING © DIGITALGLOBE © MICROSOFT CORPORATION © HERE

0 100 m



FIELD NUMBER	S 240
NUMBER ON THE MAP	US ۱۹۲
LOCAL NAME	BAŞÛRÎ XÛARÛ 1
POSITION DTM	36°31'08"N 44°18'30"E
AREA	0,38 ha
TYPE OF SITE	FLAT SETTLEMENT
OBSERVATION CONDITIONS	GOOD
DAMAGES AND THREATS	AGRICULTURE
AREAS COLLECTED	WHOLE SITE

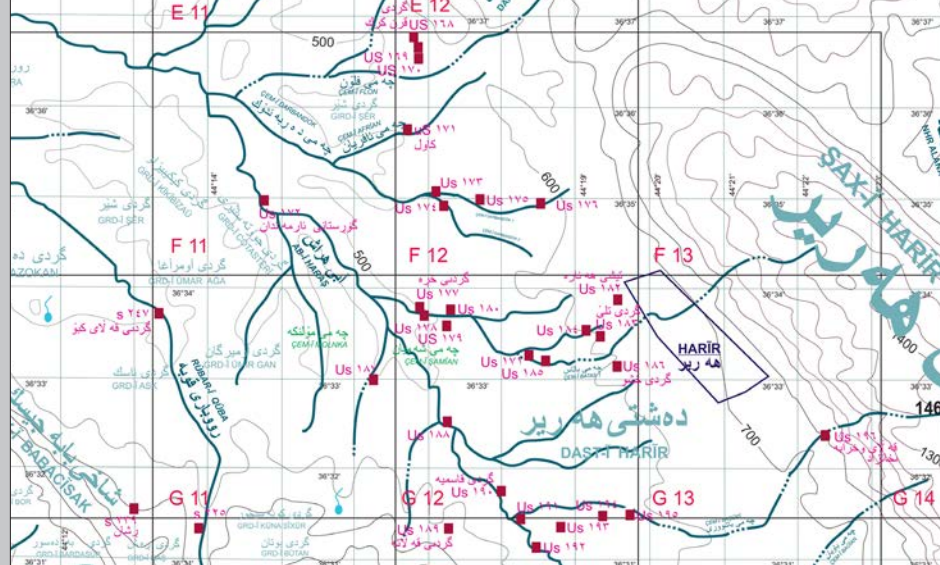
TENTATIVE CHRONOLOGY																							
PAL	PPN	0	1	2	3	4	5	6	7	8	9	10	11	12	13	14	15	16	17	18	19	20	21

US 192. SEEN FROM SOUTH-WEST.

PHOTO BY DARIUSZ PIASECKI, 2016



REGION: HARİR PLAIN, NORTHERN PART. MAP BY XENIA KOLIŃSKA





S 241 / US 194

BING © DIGITALGLOBE © MICROSOFT CORPORATION © HERE

0 300 m



FIELD NUMBER	S 241
NUMBER ON THE MAP	US ۱۹۴
LOCAL NAME	BAŞÛRÎ XUARÛ 2
POSITION DTM	36°31'29"N 44°19'22"E
AREA	4,6 ha
TYPE OF SITE	FLAT SETTLEMENT
OBSERVATION CONDITIONS	GOOD
DAMAGES AND THREATS	AGRICULTURE
AREAS COLLECTED	WHOLE SITE

TENTATIVE CHRONOLOGY

PAL	PPN	0	1	2	3	4	5	6	7	8	9	10	11	12	13	14	15	16	17	18	19	20	21

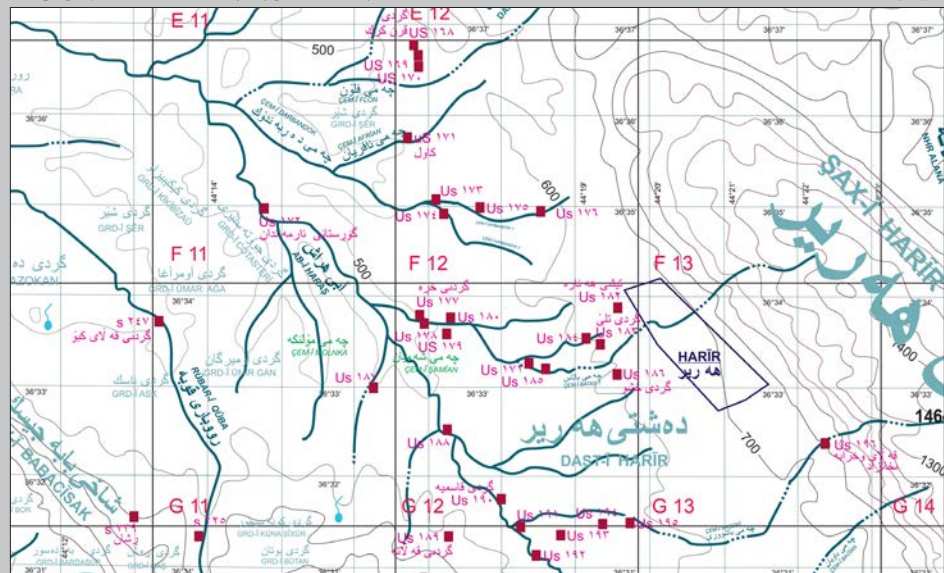
US 194. SEEN FROM SOUTH-WEST.

PHOTO BY DARIUSZ PLASECKI, 2016



REGION: HARÏR PLAIN, NORTHERN PART.

MAP BY XENIA KOLINSKA





S 248 / US 195

BING © DIGITALGLOBE © MICROSOFT CORPORATION © HERE

0 300 m



FIELD NUMBER	S 248
NUMBER ON THE MAP	US ۱۹۵
LOCAL NAME	BAŞÛRÎ XUARÛ 5
POSITION DTM	36°31'30"N 44°19'42"E
AREA	5,7 ha
TYPE OF SITE	TELL WITH LOWER CITY
OBSERVATION CONDITIONS	GOOD
DAMAGES AND THREATS	AGRICULTURE
AREAS COLLECTED	A B C

PERIOD OF OCCUPATION																							
PAL	PPN	0	1	2	3	4	5	6	7	8	9	10	11	12	13	14	15	16	17	18	19	20	21

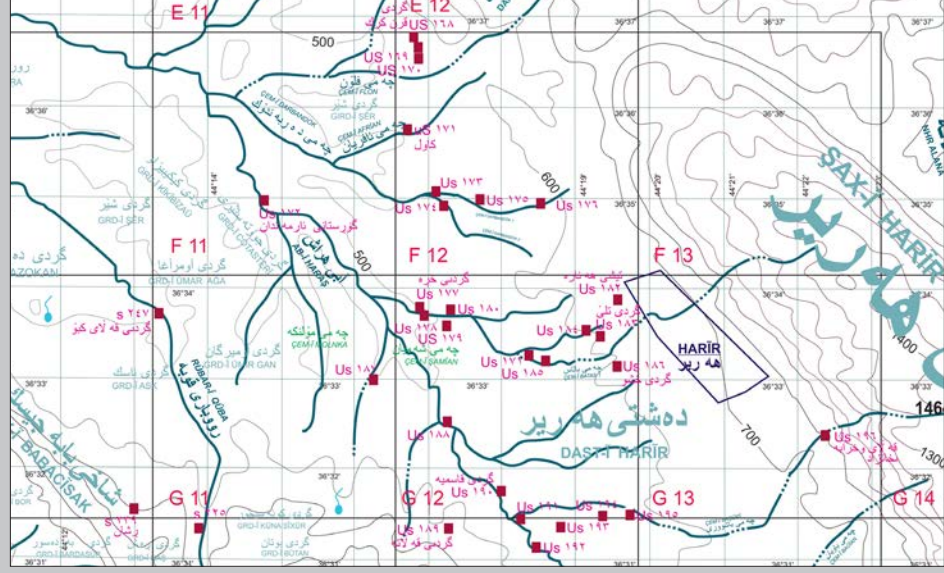
US 195. SEEN FROM NORTH.

PHOTO BY DARIUSZ PLASECKI. 2016



REGION: HARİR PLAIN, NORTHERN PART.

MAP BY XENIA KOLINSKA





BING © DIGITALGLOBE © MICROSOFT CORPORATION © HERE

0 600 m

US 197. SEEN FROM NORTH-WEST.

PHOTO BY DARIUSZ PIASECKI. 2016



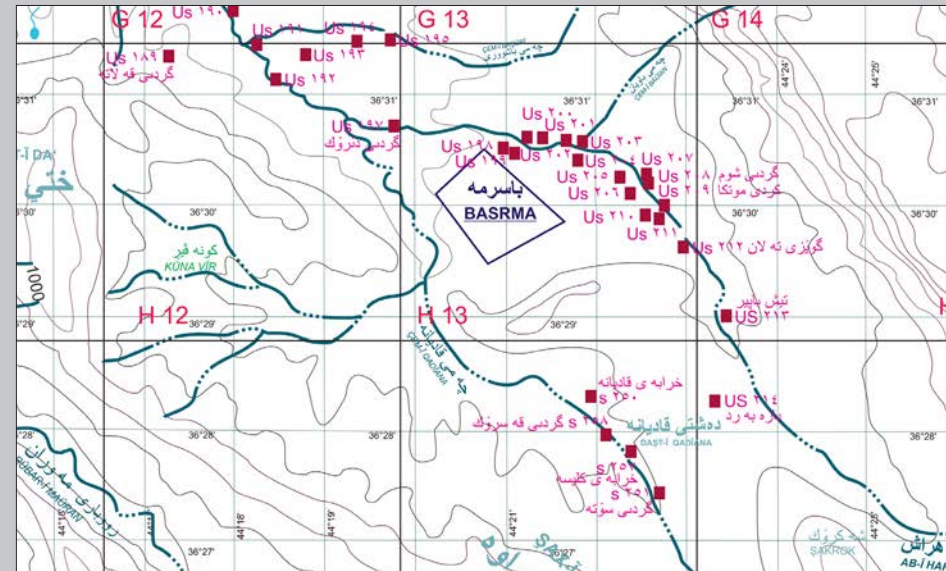
FIELD NUMBER	S 231
NUMBER ON THE MAP	US ۱۹۷
LOCAL NAME	GIRD-Ī DĒROK
POSITION DTM	36°30'43"N 44°19'46"E
AREA	20,7 ha
TYPE OF SITE	FLAT SETTLEMENT
OBSERVATION CONDITIONS	GOOD/DIFFICULT
DAMAGES AND THREATS	CANALS/ROADS/ AGRICULTURE
AREAS COLLECTED	A B C D E

TENTATIVE CHRONOLOGY

PAL	PPN	0	1	2	3	4	5	6	7	8	9	10	11	12	13	14	15	16	17	18	19	20	21

REGION: HARĪR PLAIN. SOUTHERN PART. VICINITY OF BASRMA VILLAGE.

MAP BY XENIA KOLINSKA





BING © DIGITALGLOBE © MICROSOFT CORPORATION © HERE

0 100 m



FIELD NUMBER	S 215					
NUMBER ON THE MAP	US ۱۹۹					
LOCAL NAME	BASRMA 2					
POSITION DTM	36°30'30"N 44°21'05"E					
AREA	0,16 ha					
TYPE OF SITE	FLAT SETTLEMENT					
OBSERVATION CONDITIONS	GOOD / POOR					
DAMAGES AND THREATS	AGRICULTURE					
AREAS COLLECTED	A	B				

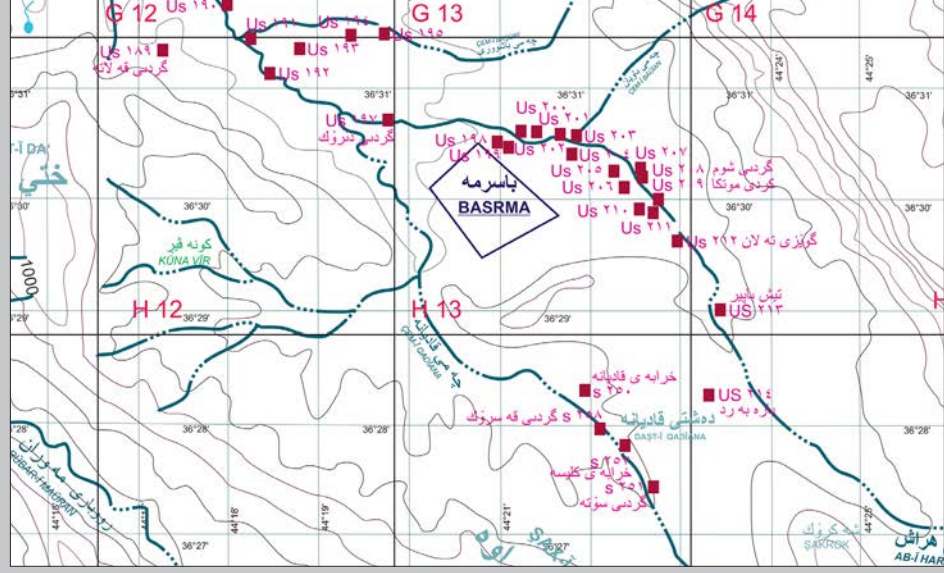
PERIOD OF OCCUPATION																							
PAL	PPN	0	1	2	3	4	5	6	7	8	9	10	11	12	13	14	15	16	17	18	19	20	21

US 199. SEEN FROM SOUTH-WEST.

PHOTO BY JOANNA MARDAS, 2016



REGION: HARĪR PLAIN. SOUTHERN PART. VICINITY OF BASRMA VILLAGE. MAP BY XENIA KOLIŃSKA





BING © DIGITALGLOBE © MICROSOFT CORPORATION © HERE

0 100 m



FIELD NUMBER	S 230
NUMBER ON THE MAP	US ۲۰۰
LOCAL NAME	SÛRSÛRA 2
POSITION DTM	36°30'33"N 44°21'12"E
AREA	? (VISIBLE IN SECTION)
TYPE OF SITE	FLAT SETTLEMENT
OBSERVATION CONDITIONS	POOR
DAMAGES AND THREATS	CUTS/ AGRICULTURE
AREAS COLLECTED	WHOLE SECTION

PERIOD OF OCCUPATION

PAL	PPN	0	1	2	3	4	5	6	7	8	9	10	11	12	13	14	15	16	17	18	19	20	21

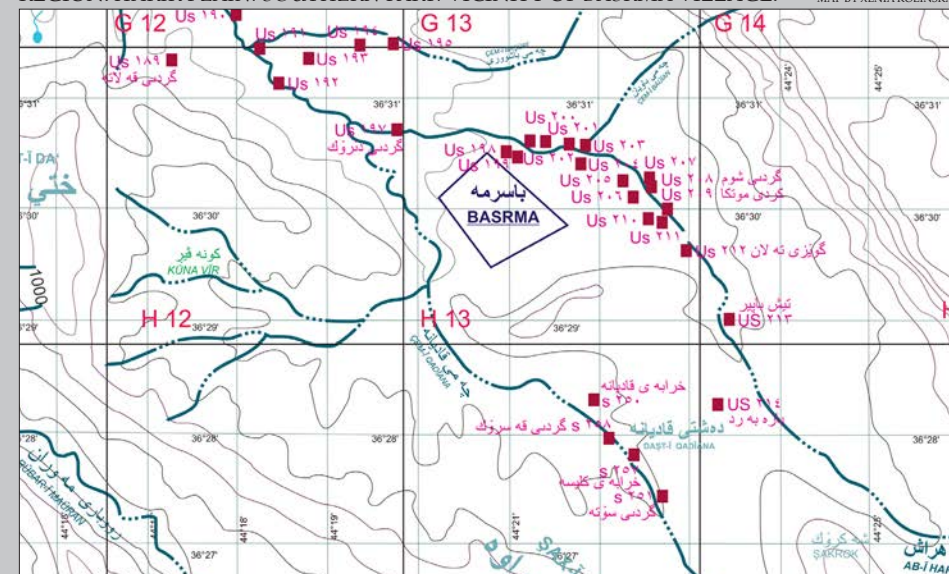
US 200. SEEN FROM SOUTH.

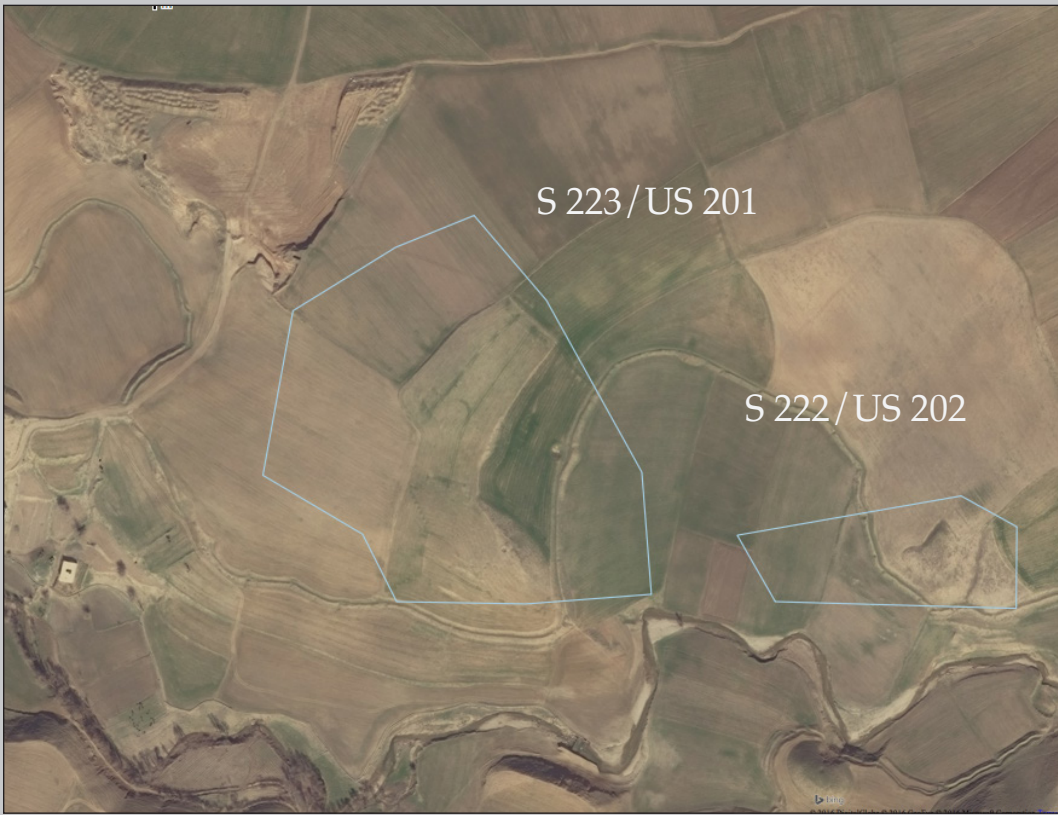
PHOTO BY DARIUSZ PIASECKI. 2016



REGION: HARĪR PLAIN. SOUTHERN PART. VICINITY OF BASRMA VILLAGE.

MAP BY XENIA KOLIŃSKA





BING © DIGITALGLOBE © MICROSOFT CORPORATION © HERE

0 100 m



FIELD NUMBER	S 222
NUMBER ON THE MAP	US ۲۰۲
LOCAL NAME	SÜRSÜRA 1
POSITION DTM	36°30'33"N 44°21'39"E
AREA	1,5 ha
TYPE OF SITE	FLAT SETTLEMENT
OBSERVATION CONDITIONS	GOOD
DAMAGES AND THREATS	AGRICULTURE / CEMETERY
AREAS COLLECTED	WHOLE SITE

PERIOD OF OCCUPATION																							
PAL	PPN	0	1	2	3	4	5	6	7	8	9	10	11	12	13	14	15	16	17	18	19	20	21

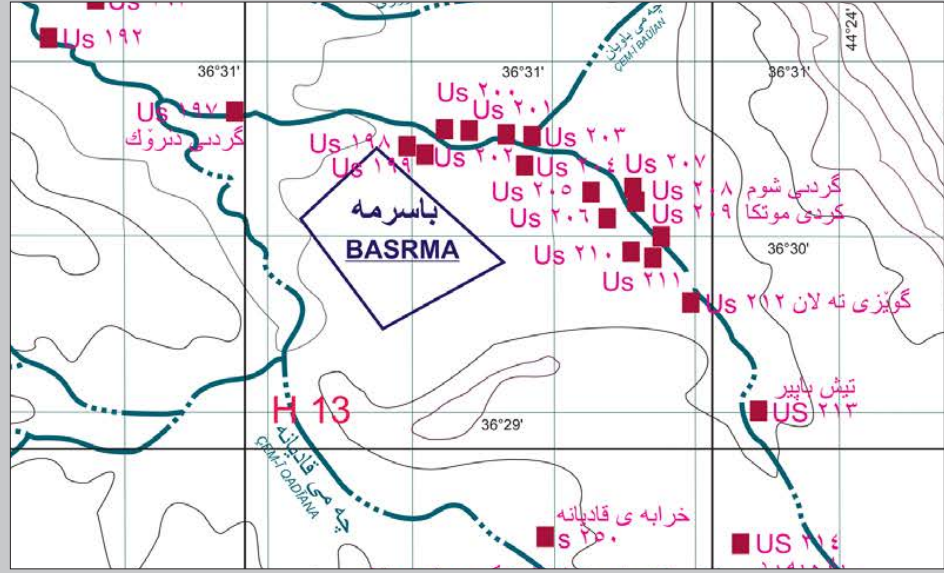
US 202. SEEN FROM SOUTH.

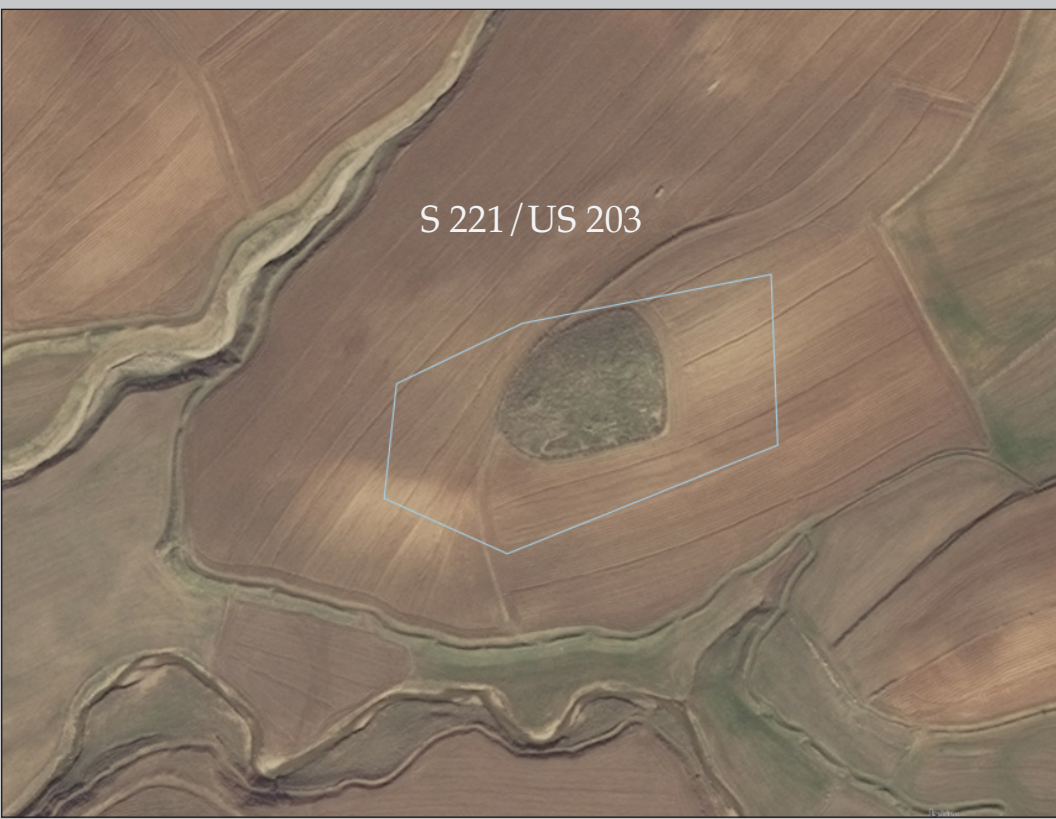
PHOTO BY JOANNA MARDAS. 2016



REGION: HARİR PLAIN. SOUTHERN PART. VICINITY OF BASRMA VILLAGE.

MAP BY XENIA KOLIŃSKA





BING © DIGITALGLOBE © MICROSOFT CORPORATION © HERE

0 100 m

US 203. SEEN FROM NORTH.

PHOTO BY JOANNA MARDAS. 2016

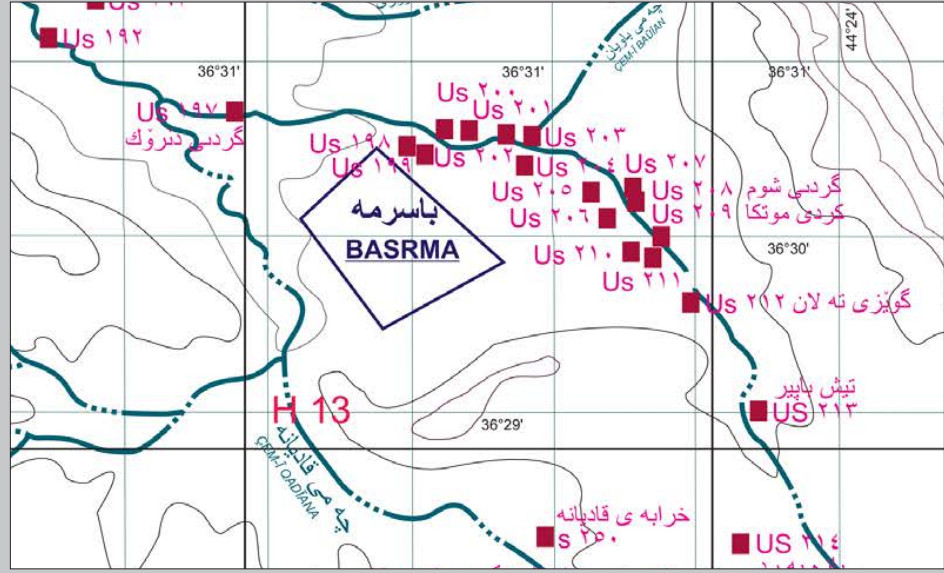


FIELD NUMBER	S 221
NUMBER ON THE MAP	US ۲۰۳
LOCAL NAME	MŪTRAŪA 2
POSITION DTM	36°30'31"N 44°21'51"E
AREA	4,8 ha
TYPE OF SITE	TELL
OBSERVATION CONDITIONS	GOOD
DAMAGES AND THREATS	AGRICULTURE / CEMETERY
AREAS COLLECTED	WHOLE SITE

PERIOD OF OCCUPATION																							
PAL	PPN	0	1	2	3	4	5	6	7	8	9	10	11	12	13	14	15	16	17	18	19	20	21



REGION: HARĪR PLAIN. SOUTHERN PART. VICINITY OF BASRMA VILLAGE. MAP BY XENIA KOLIŃSKA





BING © DIGITALGLOBE © MICROSOFT CORPORATION © HERE

0

100 m



FIELD NUMBER	S 216
NUMBER ON THE MAP	US ۲۰۴
LOCAL NAME	BASRMA 3
POSITION DTM	36°30'25"N 44°21'49"E
AREA	0,53 ha
TYPE OF SITE	FLAT SETTLEMENT
OBSERVATION CONDITIONS	GOOD
DAMAGES AND THREATS	AGRICULTURE
AREAS COLLECTED	WHOLE SITE

PERIOD OF OCCUPATION

PAL	PPN	0	1	2	3	4	5	6	7	8	9	10	11	12	13	14	15	16	17	18	19	20	21

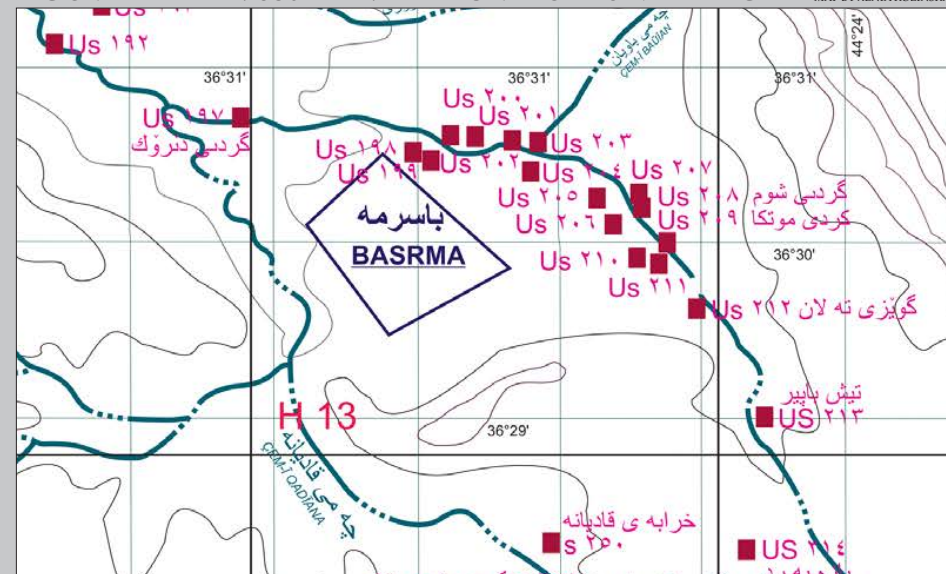
US 204. SEEN FROM NORTH.

PHOTO BY JOANNA MARDAS. 2016



REGION: HARĪR PLAIN. SOUTHERN PART. VICINITY OF BASRMA VILLAGE.

MAP BY XENIA KOLIŃSKA





S 217/US 205

BING © DIGITALGLOBE © MICROSOFT CORPORATION © HERE

0 100 m



FIELD NUMBER	S 217			
NUMBER ON THE MAP	US ۲۰۰			
LOCAL NAME	BASRMA 4			
POSITION DTM	36°30'16"N 44°22'19"E			
AREA	2,14 ha			
TYPE OF SITE	TELL			
OBSERVATION CONDITIONS	GOOD			
DAMAGES AND THREATS	AGRICULTURE			
AREAS COLLECTED	A	B	C	

TENTATIVE CHRONOLOGY

PAL	PPN	0	1	2	3	4	5	6	7	8	9	10	11	12	13	14	15	16	17	18	19	20	21

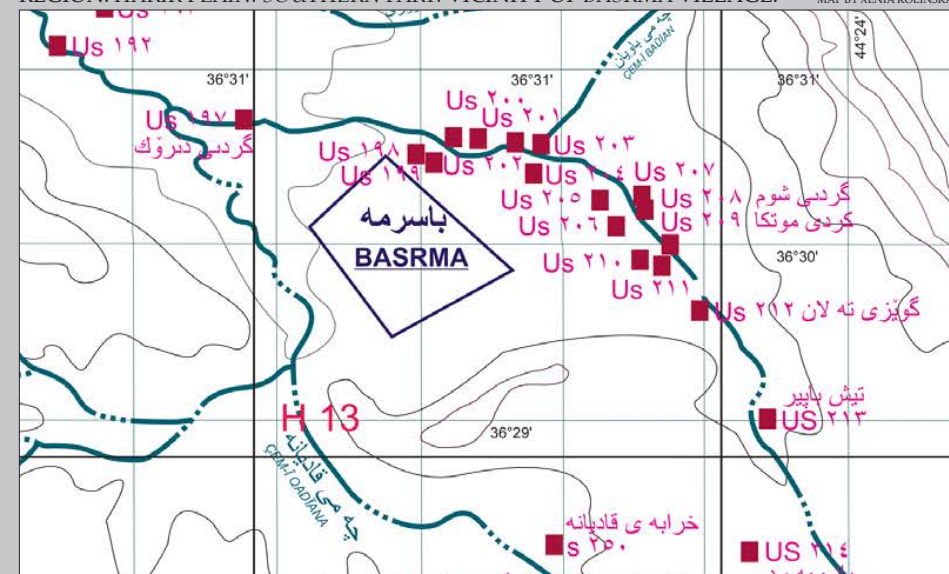
US 205. SEEN FROM SOUTH.

PHOTO BY JOANNA MARDAS. 2016



REGION: HARĪR PLAIN. SOUTHERN PART. VICINITY OF BASRMA VILLAGE.

MAP BY XENIA KOLIŃSKA





BING © DIGITALGLOBE © MICROSOFT CORPORATION © HERE

0 100 m



FIELD NUMBER	S 218
NUMBER ON THE MAP	US ۲۰۶
LOCAL NAME	BANĪ MŪTKAN
POSITION DTM	36°30'05"N 44°22'23"E
AREA	3,3 ha
TYPE OF SITE	TELL
OBSERVATION CONDITIONS	GOOD
DAMAGES AND THREATS	AGRICULTURE
AREAS COLLECTED	A B C

PERIOD OF OCCUPATION

PAL	PPN	0	1	2	3	4	5	6	7	8	9	10	11	12	13	14	15	16	17	18	19	20	21

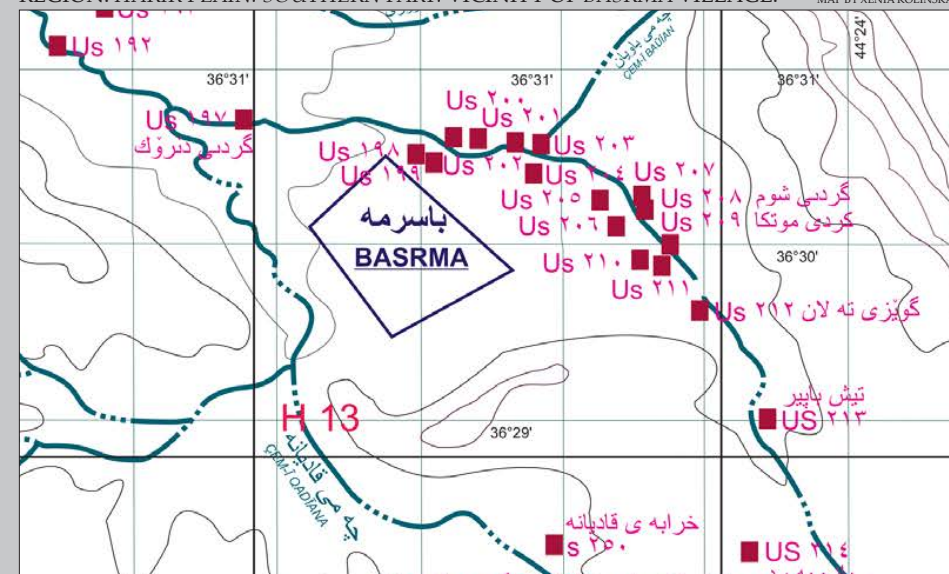
US 206. SEEN FROM SOUTH-WEST.

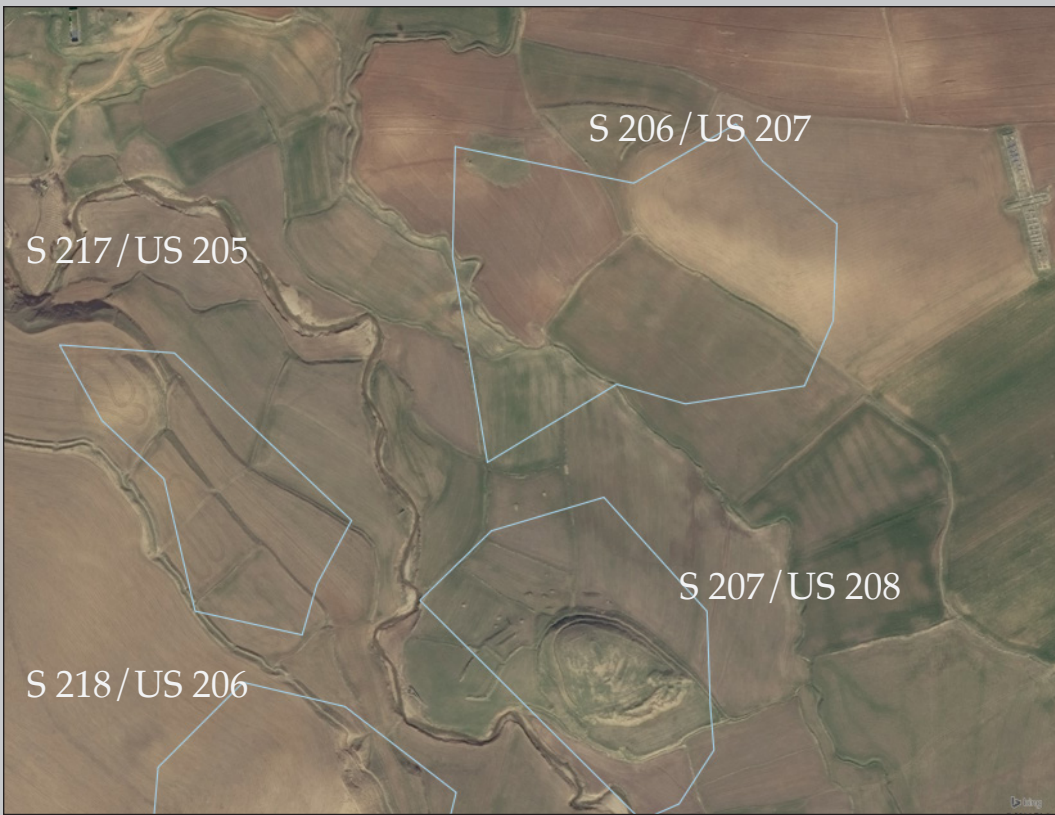
PHOTO BY JOANNA MARDAS. 2016



REGION: HARĪR PLAIN. SOUTHERN PART. VICINITY OF BASRMA VILLAGE.

MAP BY XENIA KOLIŃSKA





BING © DIGITALGLOBE © MICROSOFT CORPORATION © HERE

0 300 m

US 207. SEEN FROM SOUTH-WEST.

PHOTO BY DARIUSZ PIASECKI, 2016



FIELD NUMBER	S 206
NUMBER ON THE MAP	US ۲۰۷
LOCAL NAME	MŪTRAŪA 1
POSITION DTM	36°30'18"N 44°22'34"E
AREA	4,97 ha
TYPE OF SITE	FLAT SETTLEMENT
OBSERVATION CONDITIONS	GOOD
DAMAGES AND THREATS	AGRICULTURE/CANALS
AREAS COLLECTED	A B C

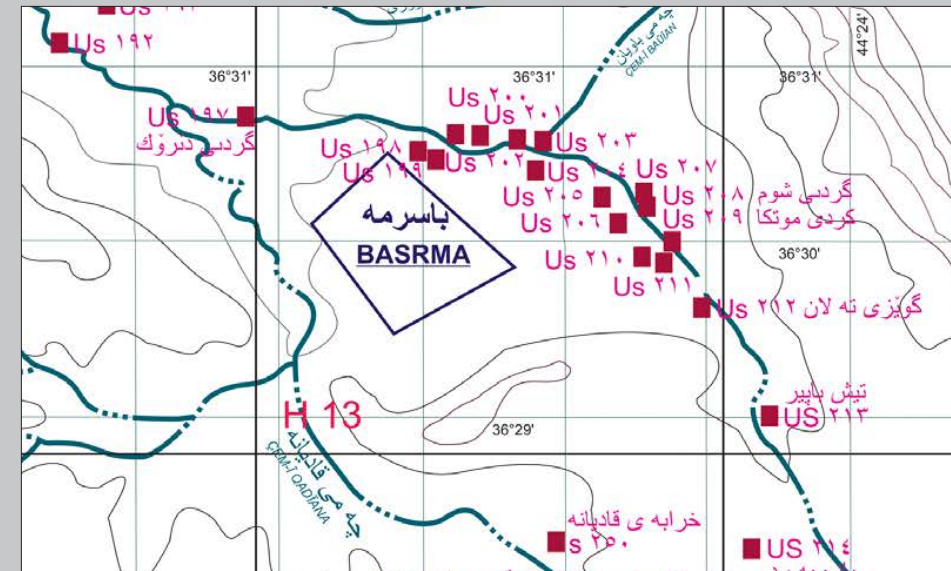
PERIOD OF OCCUPATION

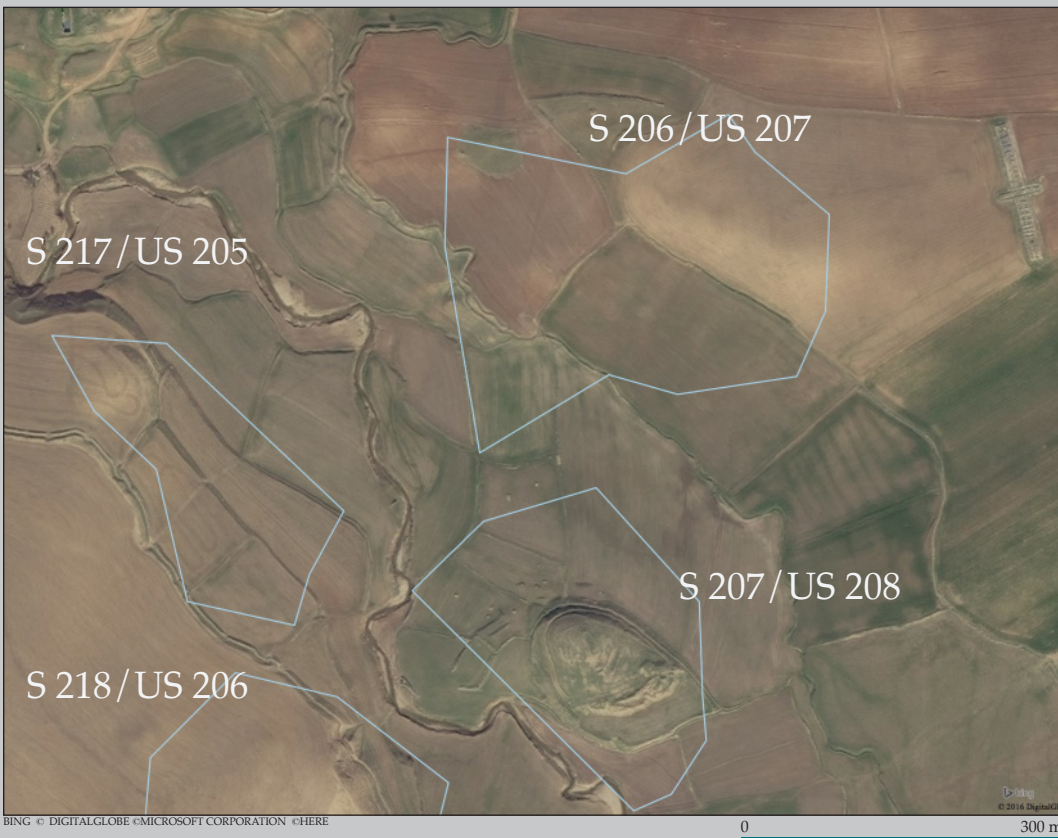
PAL	PPN	0	1	2	3	4	5	6	7	8	9	10	11	12	13	14	15	16	17	18	19	20	21



REGION: HARĪR PLAIN. SOUTHERN PART. VICINITY OF BASRMA VILLAGE.

MAP BY XENIA KOLIŃSKA





US 207. SEEN FROM SOUTH.

PHOTO BY DARIUSZ PIASECKI, 2016

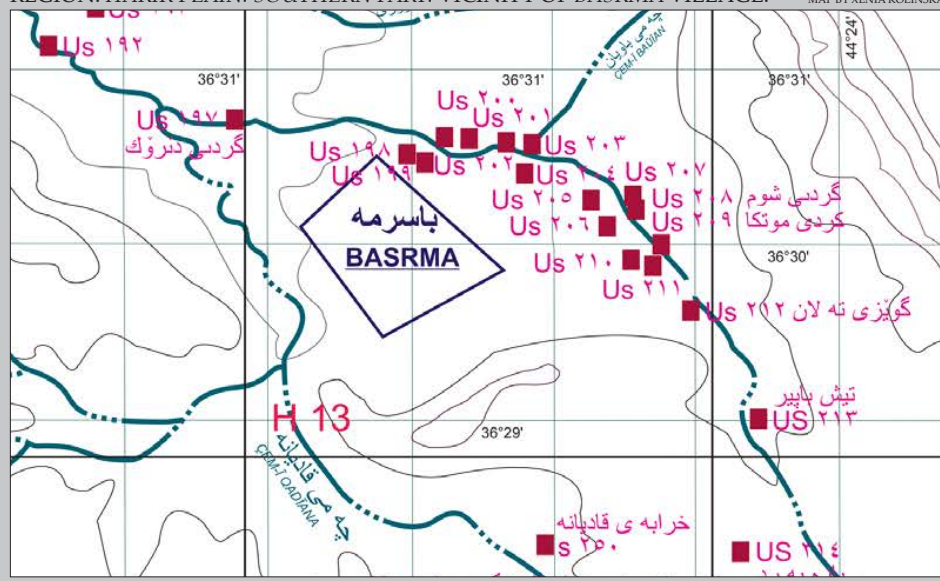


FIELD NUMBER	S 207				
NUMBER ON THE MAP	US ۲۰۸				
LOCAL NAME	GRD-Ī ŞŪM				
POSITION DTM	36°30'10"N 44°22'31"E				
AREA	3,58 ha				
TYPE OF SITE	TELL WITH LOWER CITY				
OBSERVATION CONDITIONS	GOOD				
DAMAGES AND THREATS	AGRICULTURE/CANALS/CUTS				
AREAS COLLECTED	A	B	C	D	E

PERIOD OF OCCUPATION																							
PAL	PPN	0	1	2	3	4	5	6	7	8	9	10	11	12	13	14	15	16	17	18	19	20	21



REGION: HARĪR PLAIN. SOUTHERN PART. VICINITY OF BASRMA VILLAGE. MAP BY XENIA KOLIŃSKA





BING © DIGITALGLOBE © MICROSOFT CORPORATION © HERE

0 100 m



US 209. SEEN FROM NORTH.

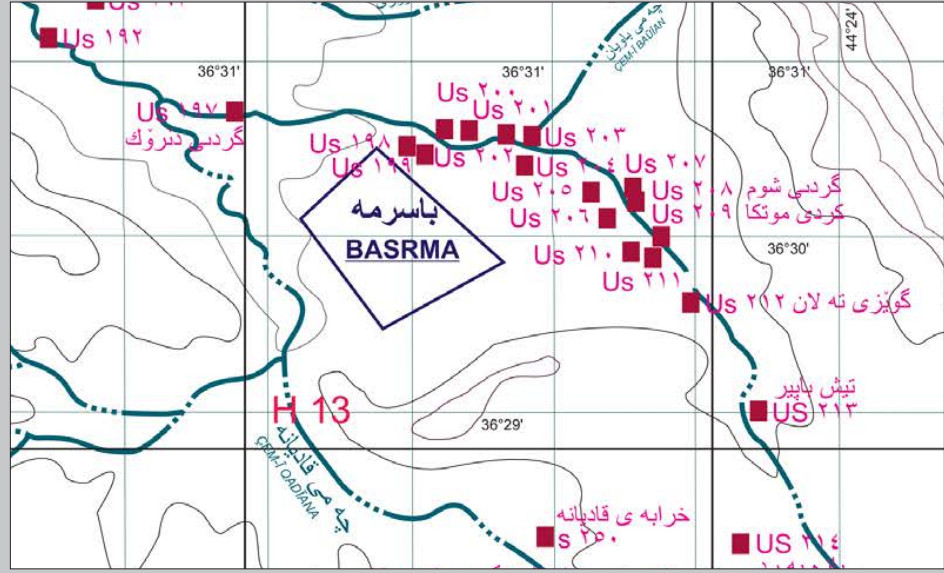
PHOTO BY DARIUSZ PIASECKI. 2016



FIELD NUMBER	S 208
NUMBER ON THE MAP	US ۲۰۹
LOCAL NAME	GRD-Ī MŪTKA
POSITION DTM	36°30'00"N 44°22'44"E
AREA	0,44 ha
TYPE OF SITE	TELL
OBSERVATION CONDITIONS	GOOD
DAMAGES AND THREATS	AGRICULTURE / CUTS
AREAS COLLECTED	A

PERIOD OF OCCUPATION																							
PAL	PPN	0	1	2	3	4	5	6	7	8	9	10	11	12	13	14	15	16	17	18	19	20	21

REGION: HARĪR PLAIN. SOUTHERN PART. VICINITY OF BASRMA VILLAGE. MAP BY XENIA KOLIŃSKA





BING © DIGITALGLOBE © MICROSOFT CORPORATION © HERE

0 100 m



FIELD NUMBER	S 219
NUMBER ON THE MAP	US ۲۱۰
LOCAL NAME	NO NAME
POSITION DTM	36°29'56"N 44°22'34"E
AREA	0,45 ha
TYPE OF SITE	FLAT SETTLEMENT
OBSERVATION CONDITIONS	GOOD
DAMAGES AND THREATS	AGRICULTURE
AREAS COLLECTED	WHOLE SITE

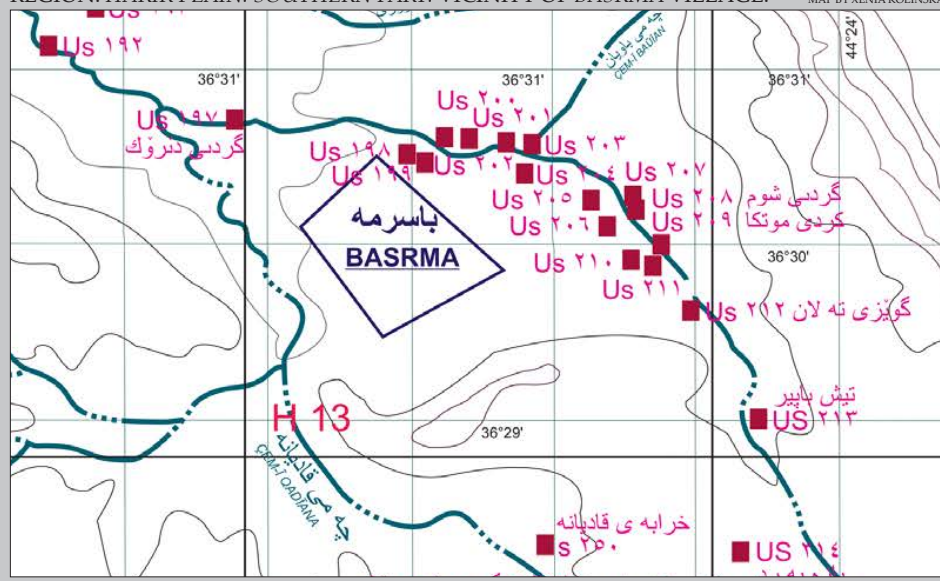
PERIOD OF OCCUPATION																							
PAL	PPN	0	1	2	3	4	5	6	7	8	9	10	11	12	13	14	15	16	17	18	19	20	21

US 210. SEEN FROM SOUTH.

PHOTO BY JOANNA MARDAS. 2016



REGION: HARĪR PLAIN. SOUTHERN PART. VICINITY OF BASRMA VILLAGE. MAP BY XENIA KOLIŃSKA





BING © DIGITALGLOBE © MICROSOFT CORPORATION © HERE
 © 2016 DigitalGlobe © 2016 GeoEye © 2016

US 211. SEEN FROM WEST.



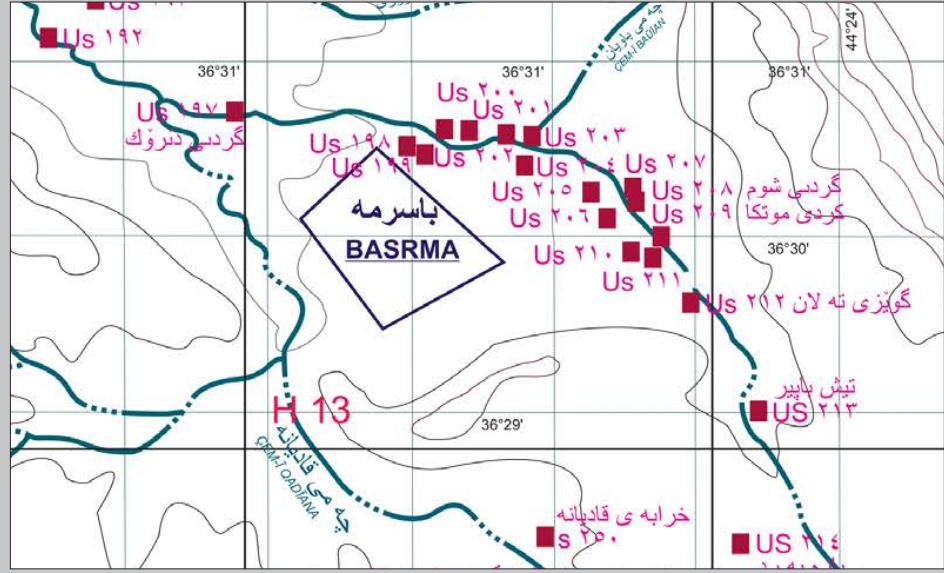
PHOTO BY XENIA KOLIŃSKA, 2016

FIELD NUMBER	S 220
NUMBER ON THE MAP	US ۲۱۱
LOCAL NAME	ALSĪDAK 1
POSITION DTM	36°29'53"N 44°22'41"E
AREA	0,38 ha
TYPE OF SITE	FLAT SETTLEMENT
OBSERVATION CONDITIONS	GOOD
DAMAGES AND THREATS	AGRICULTURE
AREAS COLLECTED	WHOLE SITE

PERIOD OF OCCUPATION																							
PAL	PPN	0	1	2	3	4	5	6	7	8	9	10	11	12	13	14	15	16	17	18	19	20	21



REGION: HARĪR PLAIN. SOUTHERN PART. VICINITY OF BASRMA VILLAGE. MAP BY XENIA KOLIŃSKA





S 205/US 212

BING © DIGITALGLOBE © MICROSOFT CORPORATION © HERE

0 100 m



FIELD NUMBER	S 205
NUMBER ON THE MAP	US ۲۱۲
LOCAL NAME	GŪÊZ-Ī TALAN
POSITION DTM	36°29'37"N 44°22'58"E
AREA	0,2 ha
TYPE OF SITE	FLAT SETTLEMENT
OBSERVATION CONDITIONS	GOOD
DAMAGES AND THREATS	AGRICULTURE
AREAS COLLECTED	WHOLE SITE

PERIOD OF OCCUPATION

PAL	PPN	0	1	2	3	4	5	6	7	8	9	10	11	12	13	14	15	16	17	18	19	20	21	

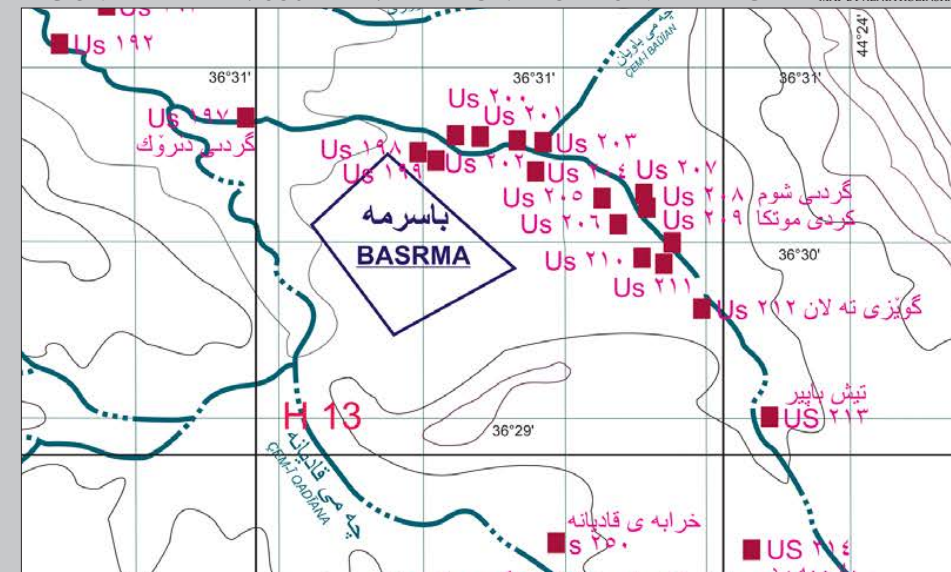
US 212. SEEN FROM SOUTH-WEST.

PHOTO BY XENIA KOLIŃSKA, 2016



REGION: HARĪR PLAIN. SOUTHERN PART. VICINITY OF BASRMA VILLAGE.

MAP BY XENIA KOLIŃSKA





BING © DIGITALGLOBE © MICROSOFT CORPORATION © HERE

0 300 m

US 213. SEEN FROM NORTH-WEST.

PHOTO BY KAROLINA DO HUU, 2016



FIELD NUMBER	S 255			
NUMBER ON THE MAP	US ۲۱۳			
LOCAL NAME	TİŞ BAPİR			
POSITION DTM	36°28'57"N 44°23'27"E			
AREA	5,96 ha			
TYPE OF SITE	TELL WITH LOWER CITY			
OBSERVATION CONDITIONS	DIFFICULT			
DAMAGES AND THREATS	CANALS/CEMETERY			
AREAS COLLECTED	A	B	C	D

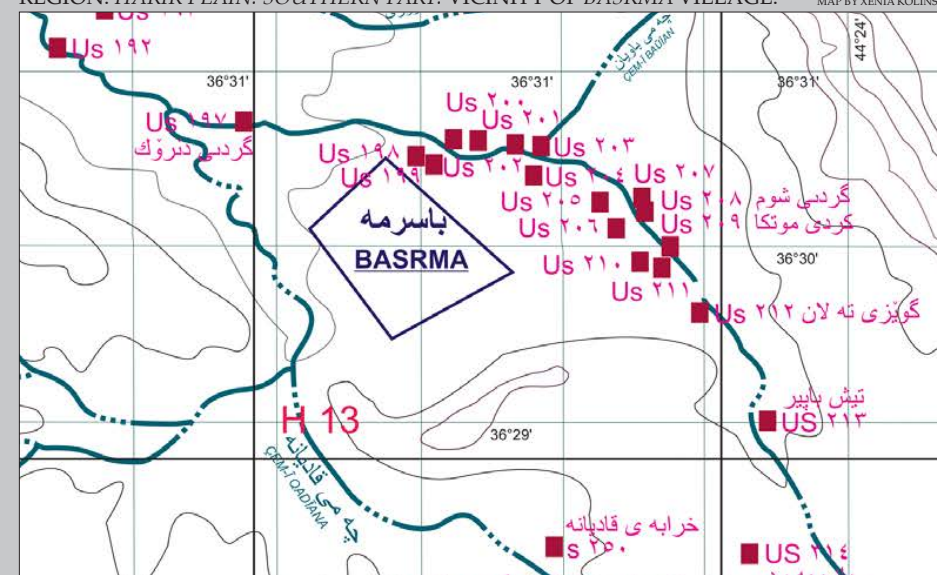
TENTATIVE CHRONOLOGY

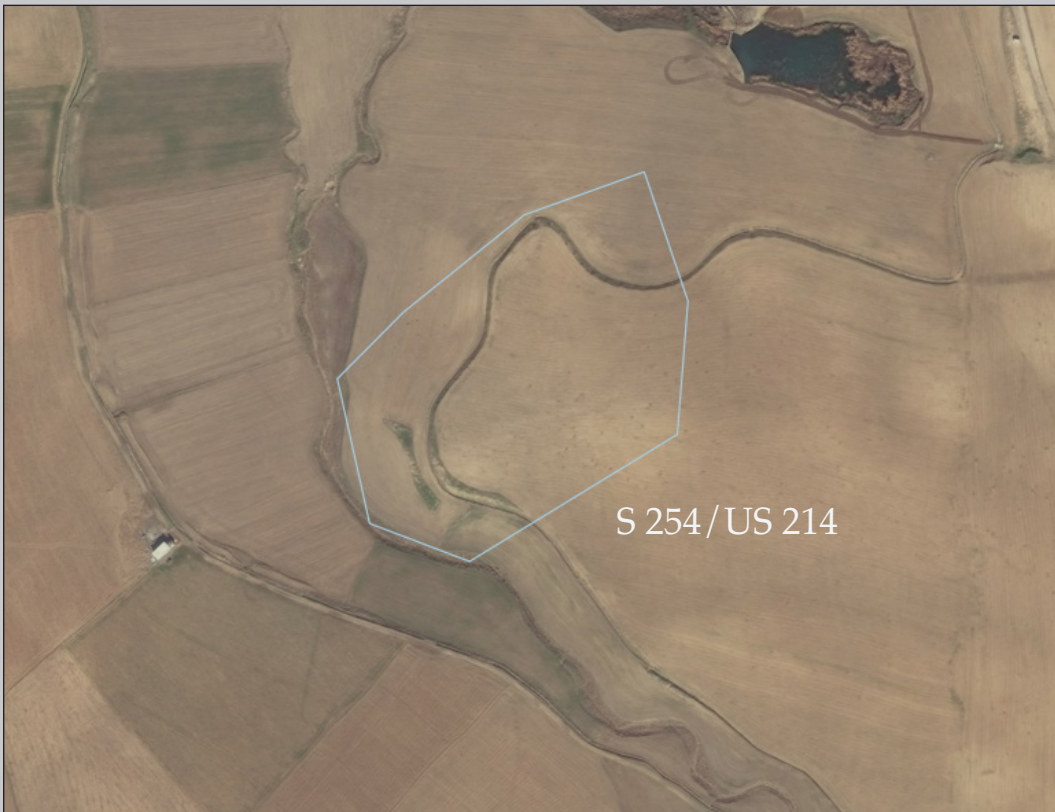
PAL	PPN	0	1	2	3	4	5	6	7	8	9	10	11	12	13	14	15	16	17	18	19	20	21



REGION: HARİR PLAIN. SOUTHERN PART. VICINITY OF BASRMA VILLAGE.

MAP BY XENIA KOLIŃSKA





BING © DIGITALGLOBE © MICROSOFT CORPORATION © HERE

0 300 m



FIELD NUMBER	S 254			
NUMBER ON THE MAP	US ۲۱۴			
LOCAL NAME	BAZA BARD			
POSITION DTM	36°28'14"N 44°23'20"E			
AREA	4,29 ha			
TYPE OF SITE	FLAT SETTLEMENT			
OBSERVATION CONDITIONS	GOOD			
DAMAGES AND THREATS	AGRICULTURE / CANALS			
AREAS COLLECTED	A	B		

TENTATIVE CHRONOLOGY

PAL	PPN	0	1	2	3	4	5	6	7	8	9	10	11	12	13	14	15	16	17	18	19	20	21

US 214. SEEN FROM NORTH-WEST.

PHOTO BY KAROLINA DO HUU, 2016



REGION: QADĪANA PLAIN.

MAP BY XENIA KOLIŃSKA

